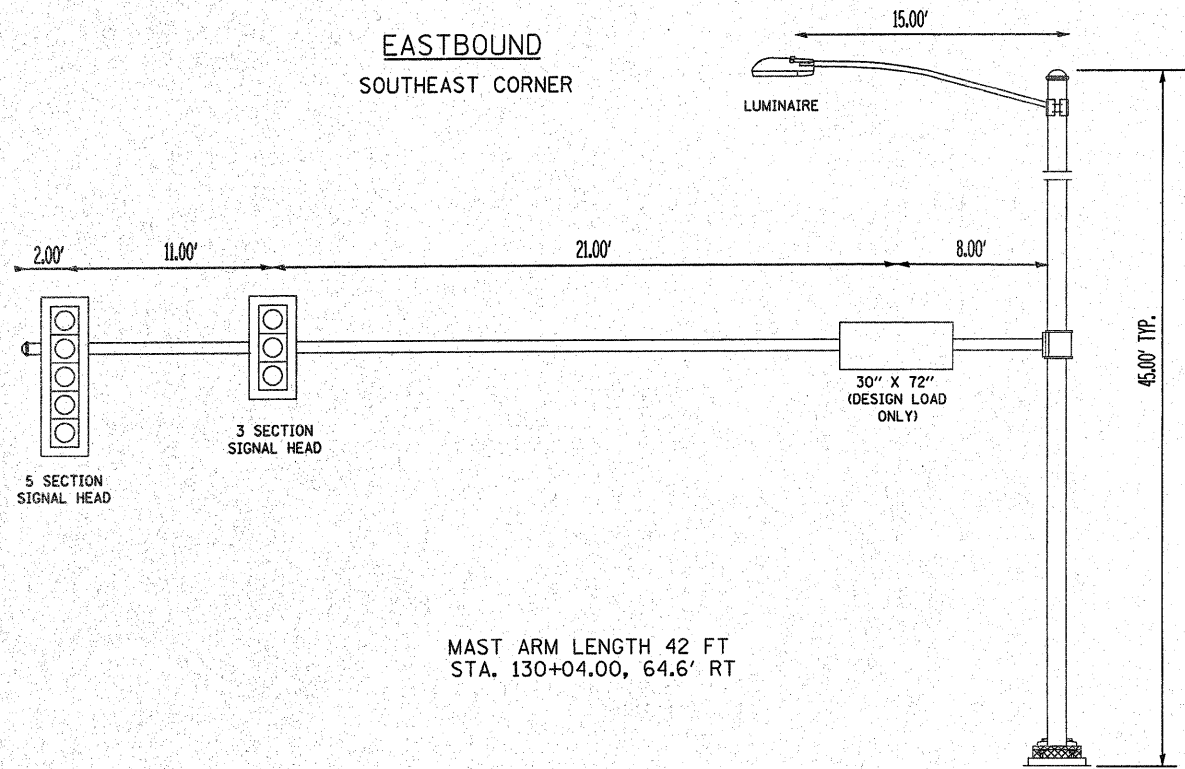
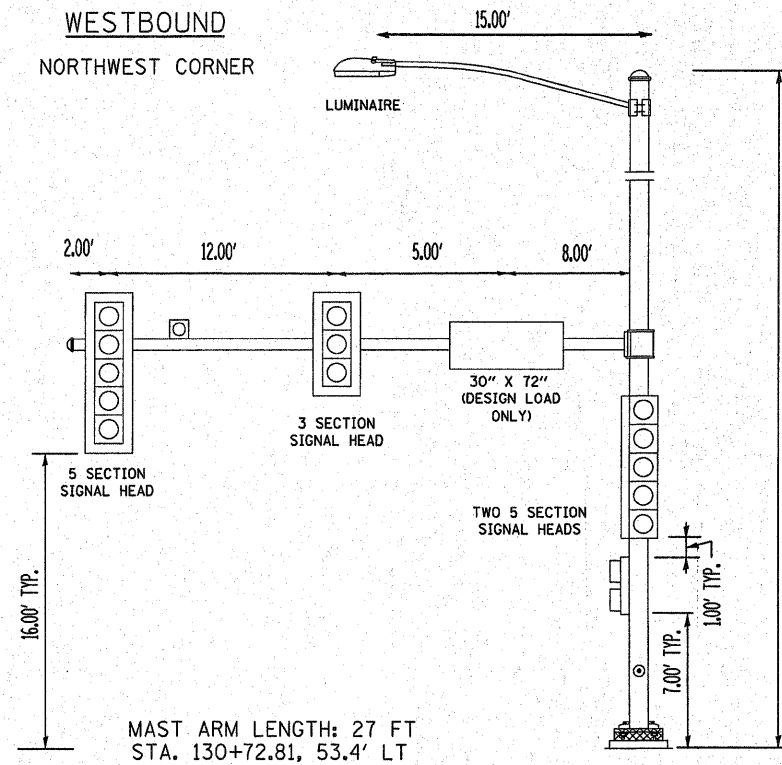


**EASTBOUND
SOUTHEAST CORNER**



MAST ARM LENGTH 42 FT
STA. 130+04.00, 64.6' RT

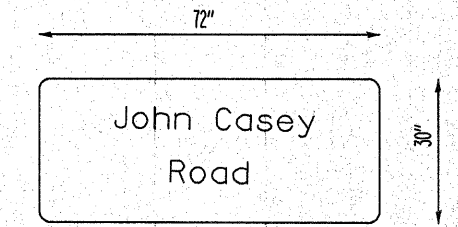
**WESTBOUND
NORTHWEST CORNER**



MAST ARM LENGTH: 27 FT
STA. 130+72.81, 53.4' LT

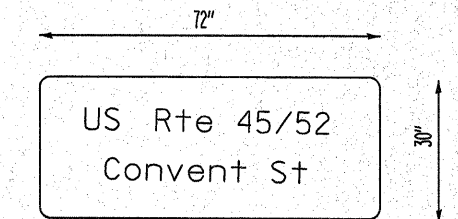
MAST ARM AND SIGNAL NOTES:

1. ALL SIGNAL HEADS HAVE BACKPLATES.
2. ALL MAST ARM FOUNDATIONS TO BE 36" DIAMETER.
3. DAMPING DEVICE SHALL CONSIST OF A 24" X 30" TYPE-I UNPAINTED ALUMINUM SIGN STOCK MOUNTED HORIZONTALLY ON THE TOP OF THE MAST ARM WITH THE 30" LENGTH PERPENDICULAR TO THE ARM. COST OF THE DAMPING DEVICE SHALL BE INCLUDED IN THE COST OF THE MAST ARM.
4. ARM SUPPORT FOR THE LUMINAIRE SHALL BE PARALLEL TO THE MAST ARM.
5. MAST ARM AND POLE SHALL BE DESIGNED FOR THE WORST CASE LOADING CONDITION WHEREBY ALL THE SIGNAL HEADS ARE LOCATED 2 FEET FARTHER OUT THAN POSITION SHOWN, HOWEVER THE INTENT IS THAT ALL SIGNAL HEADS BE CENTERED ABOVE THE LANES



2 SIGNS REQUIRED = 15 SQ. FT. EACH
= 30 SQ. FT. TOTAL

THIS STREET NAME SIGN SHALL BE PLACED ON THE MAST ARMS PARALLELED WITH JOHN CASEY ROAD

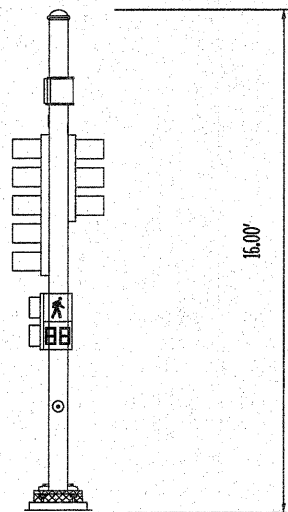


2 SIGNS REQUIRED = 15 SQ. FT. EACH
= 30 SQ. FT. TOTAL

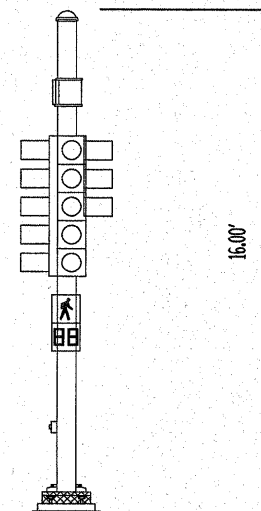
THIS STREET NAME SIGN SHALL BE PLACED ON THE MAST ARMS PARALLELED WITH CONVENT STREET

SIGN NOTES:

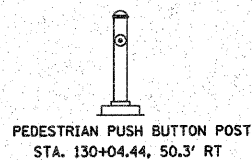
1. 3/4" BORDER, 2-1/4" CORNER RADIUS
2. TYPE ZZ SHEETING REQUIRED
3. 3.8" UC/LC LETTERS
4. 2.0 SQ FT MAXIMUM SIGN SIZE
5. WHITE REFLECTORIZED LEGEND ON A GREEN REFLECTORIZED BACKGROUND



SIGNAL POLE HEIGHT 16 FT
STA. 129+90.05, 40.2' RT

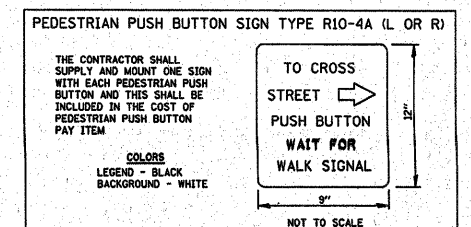


SIGNAL POLE HEIGHT 16 FT
STA. 130+87.02, 41.3' RT



PEDESTRIAN PUSH BUTTON POST
STA. 130+04.44, 50.3' RT

DRAWING NOT TO SCALE



FILE NAME =	USER NAME = mofaddenka	DESIGNED -	REVISED -	STATE OF ILLINOIS DEPARTMENT OF TRANSPORTATION	FAP 330 (US 4552) MAST ARM AND SIGN DETAILS	F.A.P. RTE. =	SECTION =	COUNTY =	TOTAL SHEETS =	SHEET NO. =
ct:\pw_work\pwidot\mofaddenka\0275242\366868-sht-details.dgn		DRAWN -	REVISED -			330	11-00068-00-SP	KANKAKEE	16	12
PLOT SCALE = 49.3827' / 1" =		CHECKED -	REVISED -			SCALE: N.T.S. SHEET NO. OF SHEETS STA. TO STA.		CONTRACT NO. 87514		
PLOT DATE = 2/10/2012		DATE -	REVISED -			ILLINOIS FED. AID PROJECT				