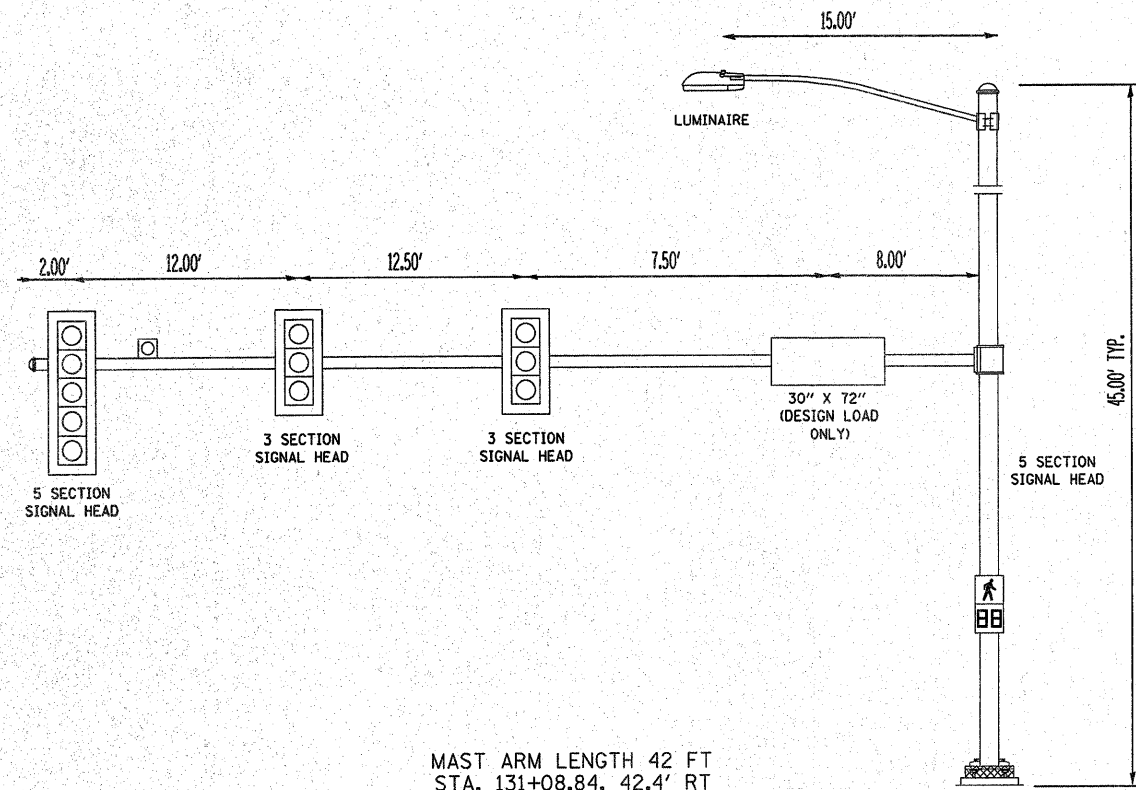
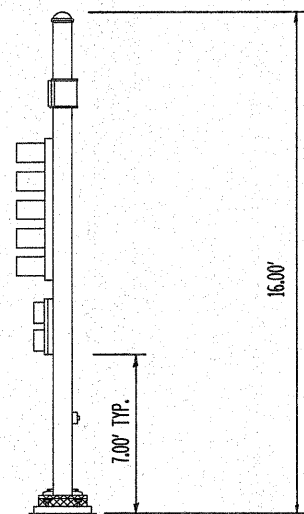


NORTHBOUND  
NORTHEAST CORNER



MAST ARM LENGTH 42 FT  
STA. 131+08.84, 42.4' RT

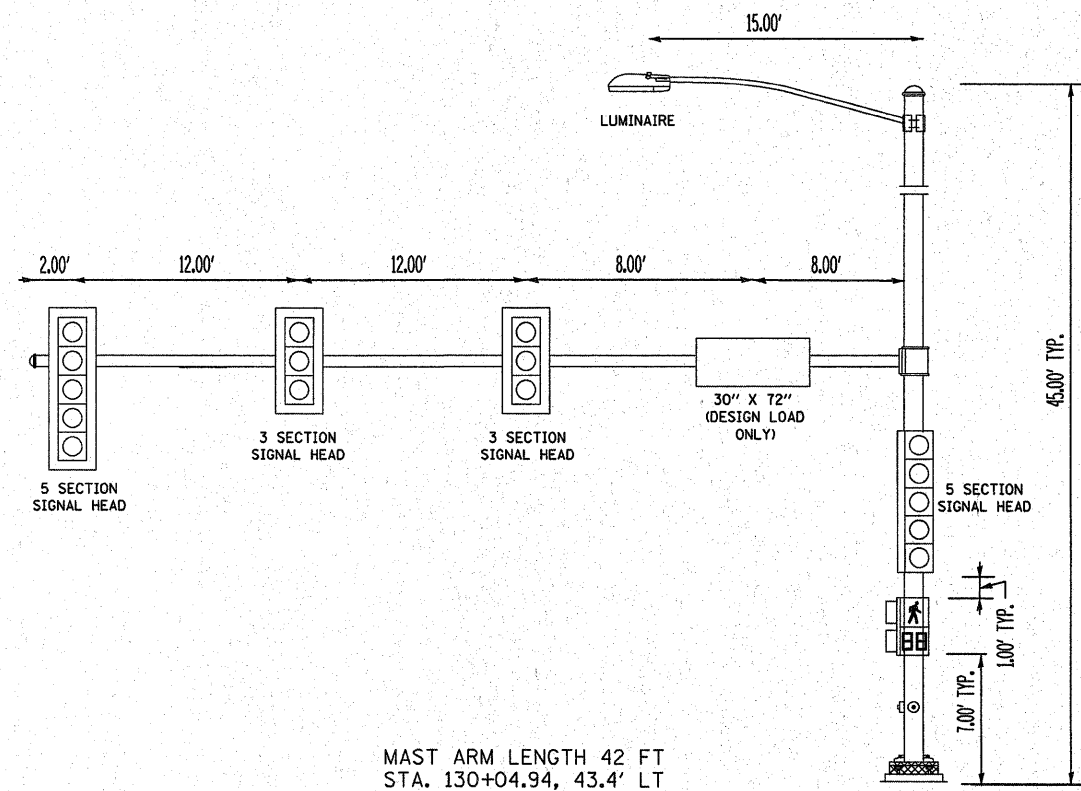


SIGNAL POLE HEIGHT 16 FT  
STA. 130+88.91, 54.1' RT

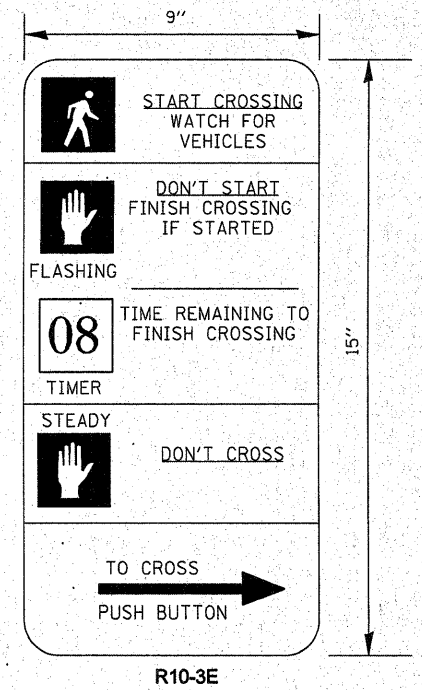


PEDESTRIAN PUSH BUTTON POST  
STA. 130+97.08, 42.6' RT

SOUTHBOUND  
SOUTHWEST CORNER



MAST ARM LENGTH 42 FT  
STA. 130+04.94, 43.4' LT



R10-3E  
THE CONTRACTOR SHALL SUPPLY AND MOUNT ONE SIGN WITH EACH PEDESTRIAN PUSH-BUTTON AND THIS SHALL BE INCLUDED IN THE COST OF PEDESTRIAN PUSH-BUTTON PAY ITEM.

DRAWING NOT TO SCALE

STATE OF ILLINOIS  
DEPARTMENT OF TRANSPORTATION

FAP 330 (US 4552)  
MAST ARM AND SIGN DETAILS

FILE NAME =	USER NAME = mofaddenka	DESIGNED -	REVISED -	F.A.P. SECTION COUNTY TOTAL SHEETS SHEET NO. 330 11-00068-00-SP KANKAKEE 16 13 CONTRACT NO. 87514 ILLINOIS FED. AID PROJECT
ci:\pw-work\p1dot\mofaddenka\d8275242\366B68-shd-deta1a.dgn	366B68-shd-deta1a.dgn	DRAWN -	REVISED -	
PLOT SCALE = 49.3827' / 1" =		CHECKED -	REVISED -	
PLOT DATE = 2/18/2012		DATE -	REVISED -	
SCALE: N.T.S. SHEET NO. OF SHEETS STA. TO STA.				