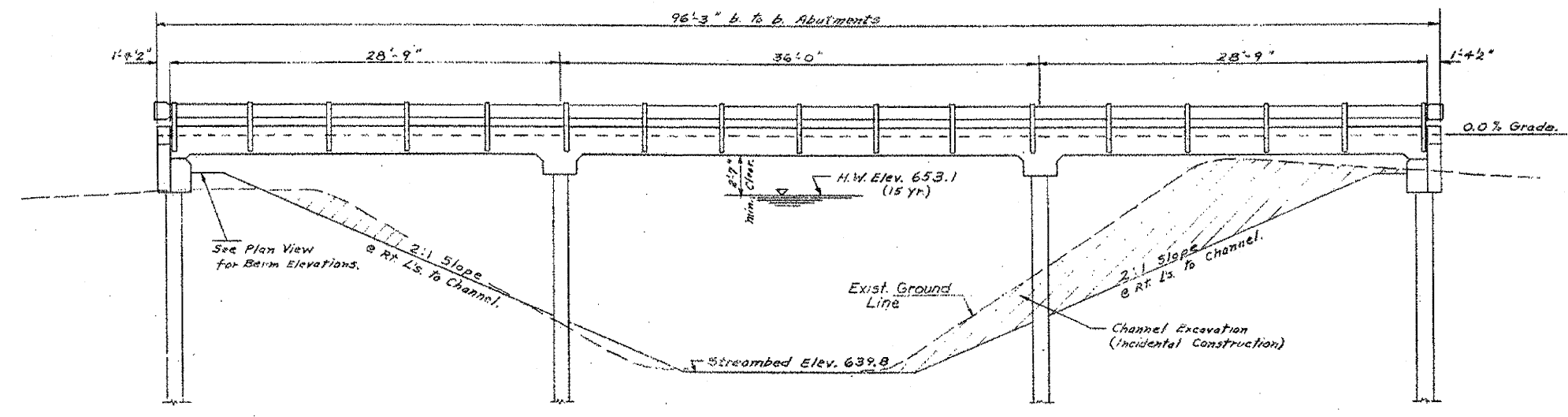


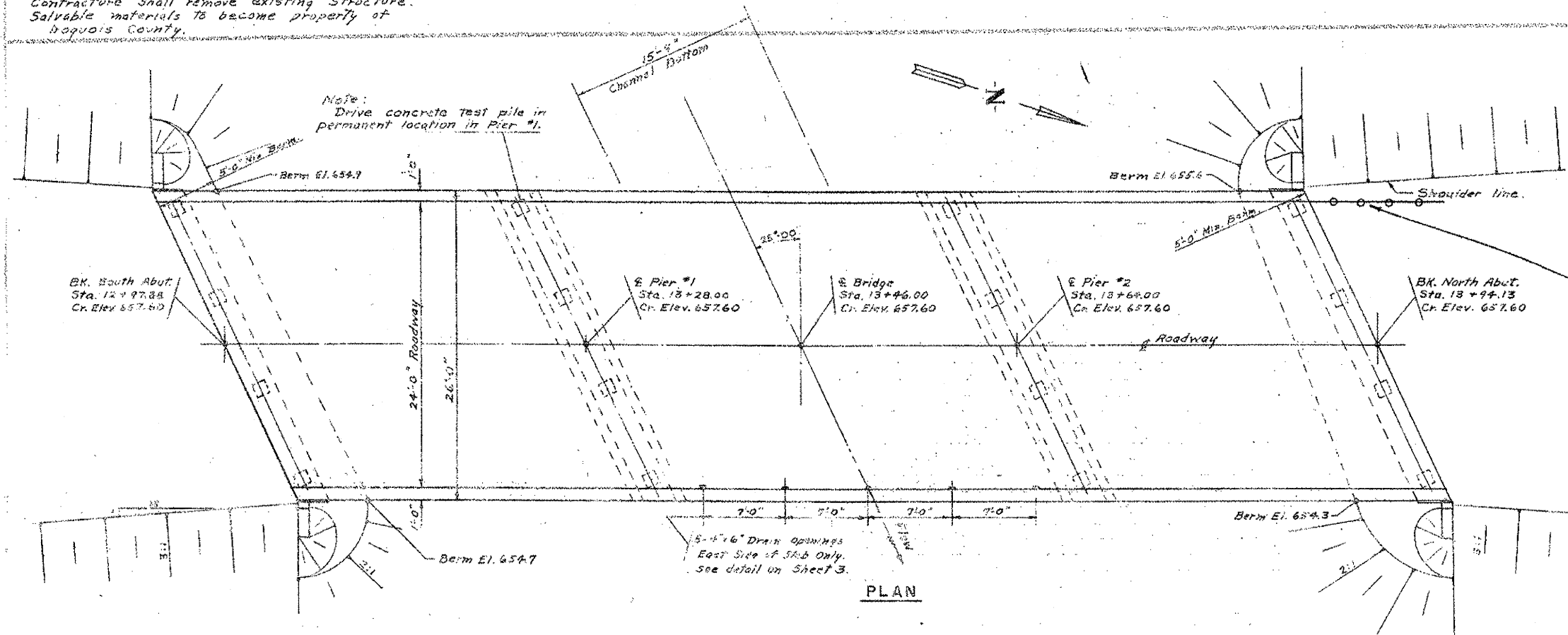
GENERAL NOTES

Class X Concrete shall be used throughout.
 The concrete floor slab shall be finished in accordance with Article 503.15 of the specifications.
 The Standard Specifications adopted by the Dept of Transportation July 2, 1973 shall apply to this work.
 Curbs shall be poured monolithically with the slab.
 For items Metal Plate Bridge Rail and Name Plates see Special Provisions.
 All rebar shall be lapped a minimum of 24 diameters unless otherwise shown.
 Pier piles shall be driven a minimum of 15' below streambed. Abutment piles shall be driven a minimum of 10 feet into undisturbed earth.
 One concrete test pile shall be driven in a permanent location in Pier #1 before ordering the remainder of the piles.

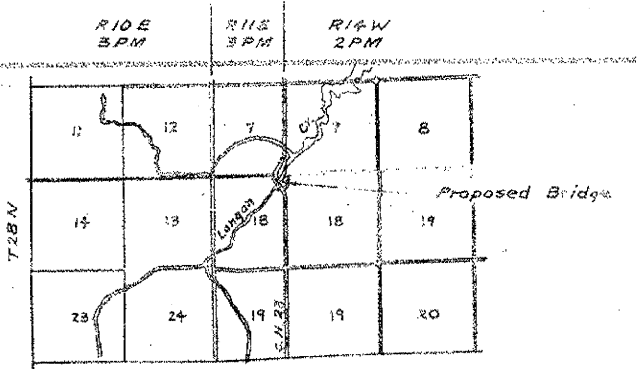


ELEVATION

BM - Top Iron Pipe West End Concrete Wall at South East Corner Existing Bridge Elev. 653.76
 Existing Structure - Steel Truss, 1-Span @ 64'-0"; 15" Roadway, timber plank floor.
 Substructure - Closed Stone Masonry Abutments.
 Contracture shall remove existing structure.
 Salvable materials to become property of Iroquois County.



PLAN



LOCATION PLAN

TOTAL BILL OF MATERIAL

ITEM	SUPER	SUB	TOTAL
Pavement Removal	Sq. Yds.	-	333
Removal of Existing Structures	Each	-	1
Class X Concrete	Cu. Yd.	125.2	14.8
Reinforcement Bars	Lbs.	28350	1510
Furnishing Precast Concrete Piles 14"	Lin. Ft.	-	560
Driving Precast Concrete Piles	Lin. Ft.	-	560
Test Piles, Precast Concrete	Each	-	1
Nameplates	Each	1	-
Metal Plate Bridge Rail (Cl. A, Ty. 1)	Lin. Ft.	187	-
Earth Excavation	Cu. Yds.	-	6608
Borrow Excavation	Cu. Yds.	-	1704
Aggregate Surface Course, Type B	Tons	-	2743
Pipe Culvert, Type 2, 15"	Lin. Ft.	-	48
Pipe Culvert, Type 3, 15"	Lin. Ft.	-	70
STEEL PIPE BEAM Guard Rail, Single Rail	Lin. Ft.	200	-
Terminal End Section, Single Rail	Each	4	-

STATION 13+46
 BUILT 1874 BY
 IROQUOIS COUNTY
 SEC. 229-B-MFT
 CORNING ILL. ST.
 NO. 038-3203

LETTERING FOR NAME PLATE
 Locate Nameplate at Southeast corner of Bridge. See Special Provisions.

DESIGN STRESSES

$f_c = 20,000$ p.s.i. (reinf.)
 $f_s = 1,300$ p.s.i.
 $n = 10$

WATERWAY DATA

Drainage Area 12,300 Acres
 Present Opening 487 Sq. Ft.
 Req'd. Opening (15 yr) 524 Sq. Ft.
 Proposed Opening 524 Sq. Ft.
 Design Discharge (Est.) 2306 c.f.s.

Carl G. G. et al.
 Illinois Structural
 #2695



GENERAL PLAN & ELEVATION
 BRIDGE NO 3203
 SECTION-229-B-MFT
 IROQUOIS COUNTY
 STATION 13+46

Anby, Oglesby, Bohm and Burdett

DRAWN C.S.T.	DATE 9-15-73	JOB NO. 72-66	SHEET NO. 1 of 8
CHECKED C.E.			