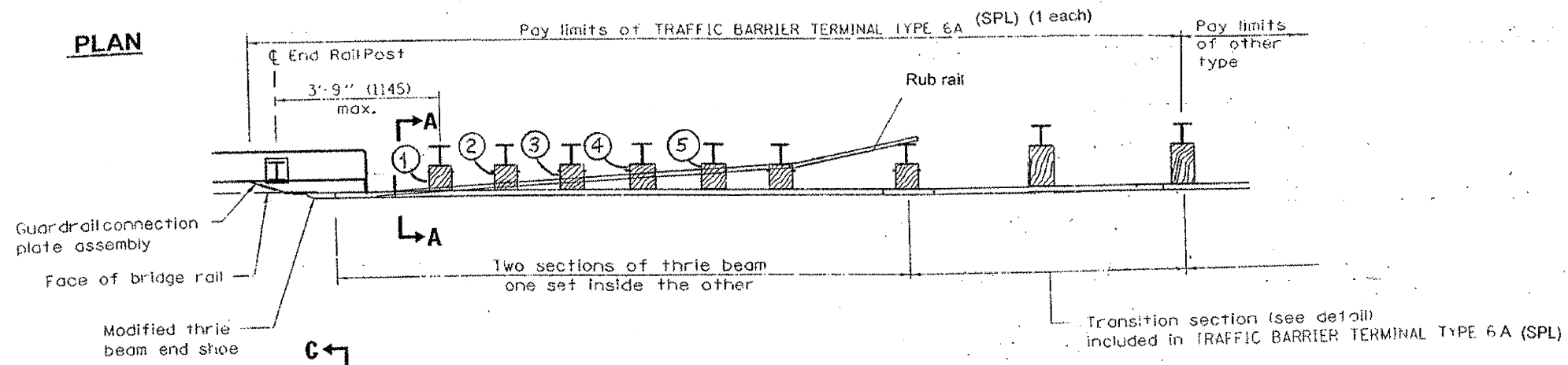
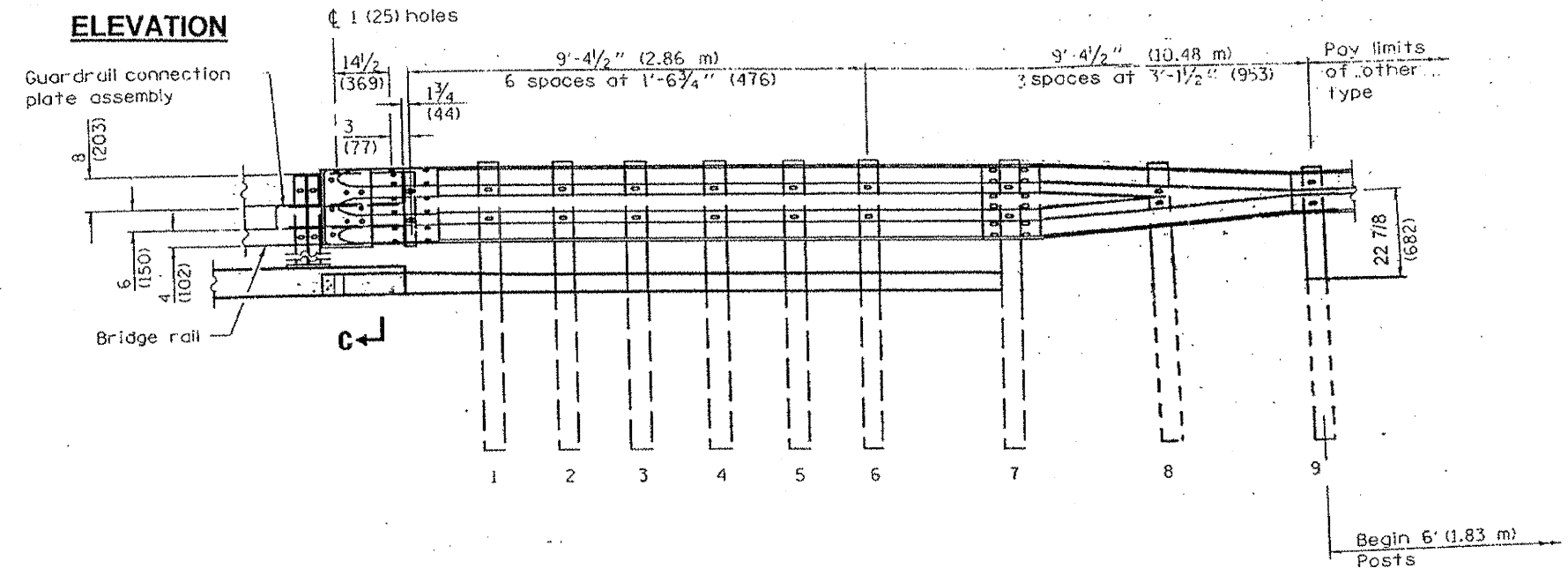


**PLAN**

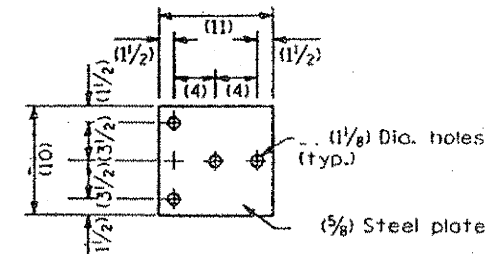


**ELEVATION**

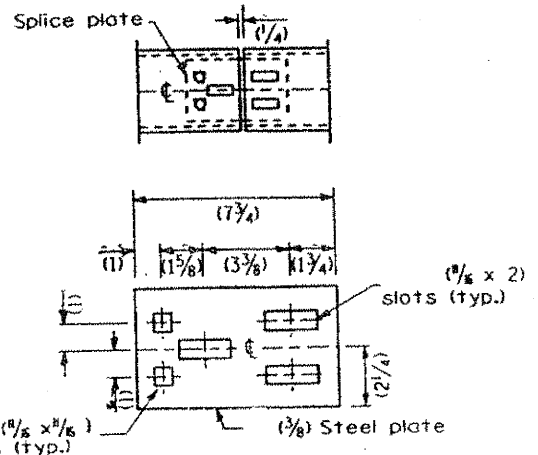


RUB RAIL WOOD BLOCKS 7" X 4"	
POST	THICKNESS
①	6 11/16"
②	5 5/16"
③	4"
④	2 5/8"
⑤	1 5/16"

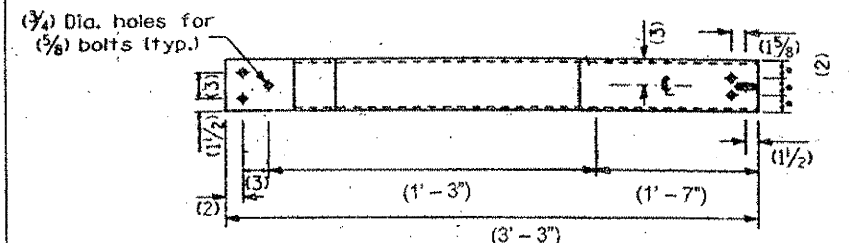
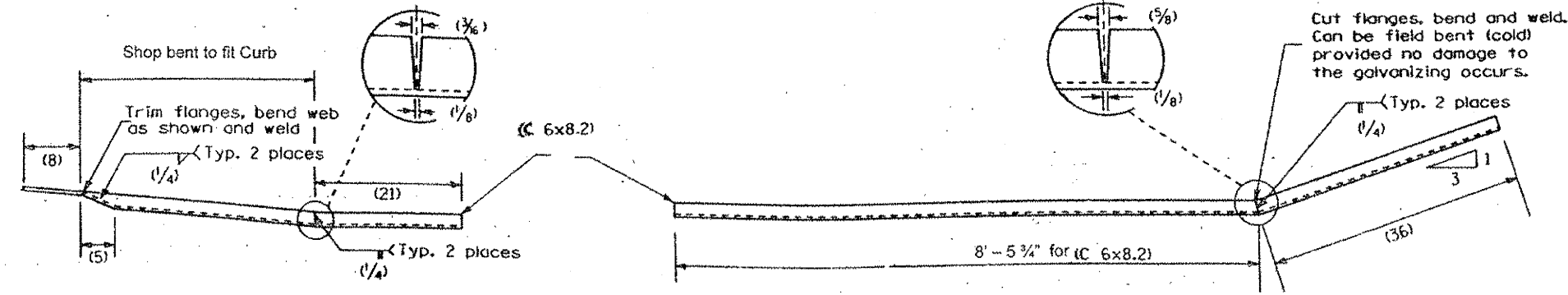
- NOTES:
- Posts 1-7 require an additional hole to attach lower block and/or rubrail.
  - Rubrail wood blocks located on posts 1 through 5 are offset drilled and secured with 5/8" carriage bolts to rubrail and post at posts 1-5.
  - Rubrail end must be attached flush with curb. Installation can be greatly simplified by fabricating or shop twisting the rubrail.
  - The rubrail and attachment to the curb requires three closely drilled holes. Appropriate epoxy bolt anchors should be used to reduce the risk of splitting the concrete.



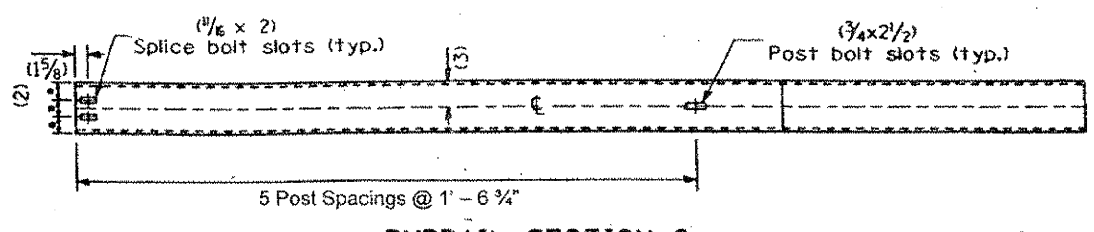
**BEARING PLATE**



**SPLICE PLATE**



**RUBRAIL SECTION 1**  
(C 6x8.2)



**RUBRAIL SECTION 2**  
(C 6x8.2)