

ROUTE NO.	SECTION	COUNTY	TOTAL SHEETS	THIS SHEET
F.A.U. 6728	*	TAZEWELL	28	6

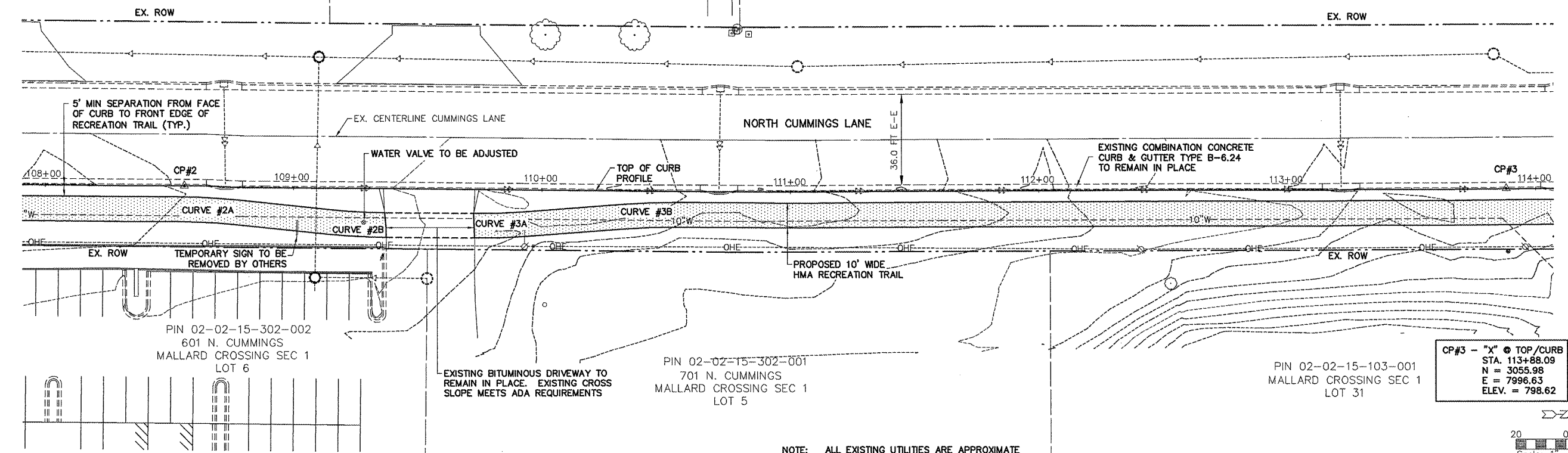
FED. RD. DIST. NO. 7 ILLINOIS PROJECT TE-00D4(110)  
\*10-00109-00-BT  
CONTRACT NO. 89598

**CURVE #2A**  
PI Sta = 108+85.70  
 $\Delta = 5^{\circ}-41'-56''$   
T = 12.44  
R = 250.00  
L = 24.87  
E = 0.31

**CURVE #2B**  
PI Sta = 109+26.49  
 $\Delta = 5^{\circ}-34'-44''$   
T = 12.18  
R = 250.00  
L = 24.34  
E = 0.30

**CURVE #3A**  
PI Sta = 109+82.76  
 $\Delta = 4^{\circ}-39'-50''$   
T = 10.18  
R = 250.00  
L = 20.35  
E = 0.21

**CURVE #3B**  
PI Sta = 110+42.79  
 $\Delta = 4^{\circ}-23'-50''$   
T = 9.60  
R = 250.00  
L = 19.19  
E = 0.18



**CP#2 - "X" @ TOP/CURB**  
STA. 108+55.94  
N = 2523.86  
E = 7995.34  
ELEV. = 805.92

**CP#3 - "X" @ TOP/CURB**  
STA. 113+88.09  
N = 3055.98  
E = 7996.63  
ELEV. = 798.62

NOTE: ALL EXISTING UTILITIES ARE APPROXIMATE AND SHOWN FOR INFORMATION PURPOSES ONLY AND ARE TO BE VERIFIED IN THE FIELD BY THE CONTRACTOR.

