

CURVE #6A
 PI Sta = 120+23.93
 $\Delta = 3^\circ-32'-36''$
 T = 7.70
 R = 250.00
 L = 15.39
 E = 0.12

CURVE #6B
 PI Sta = 120+83.94
 $\Delta = 3^\circ-20'-18''$
 T = 7.29
 R = 250.00
 L = 14.57
 E = 0.11

CURVE #7A
 PI Sta = 123+07.36
 $\Delta = 2^\circ-23'-53''$
 T = 5.23
 R = 250.00
 L = 10.46
 E = -0.05

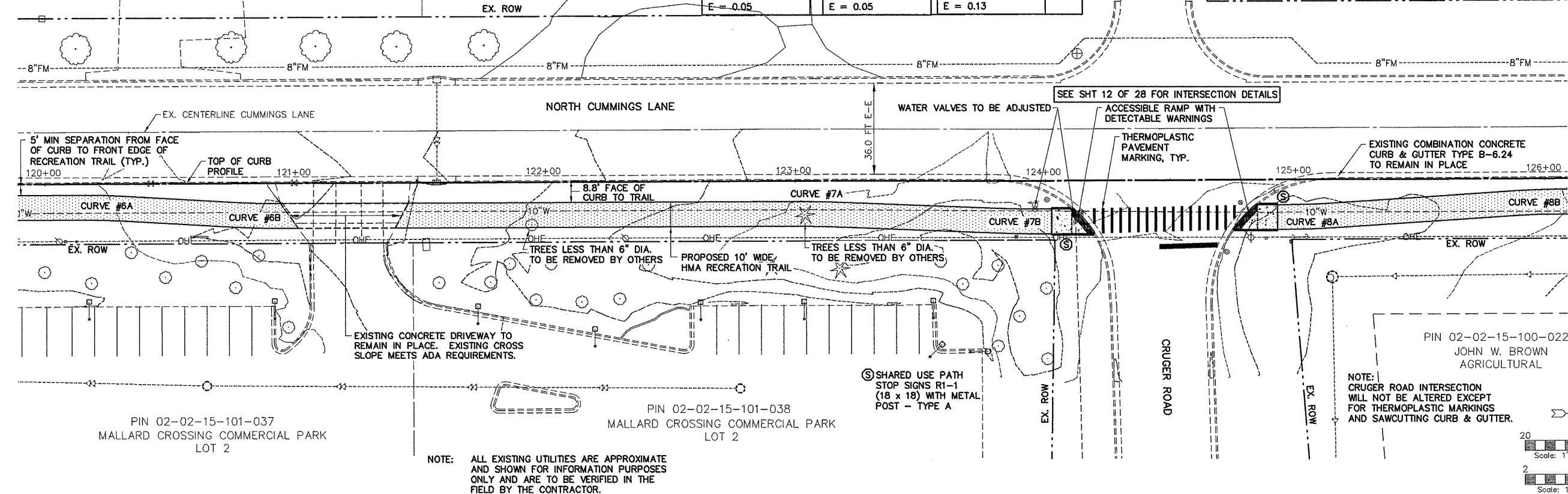
CURVE #7B
 PI Sta = 123+89.43
 $\Delta = 2^\circ-23'-53''$
 T = 5.23
 R = 250.00
 L = 10.46
 E = 0.05

CURVE #8A
 PI Sta = 125+05.80
 $\Delta = 3^\circ-38'-10''$
 T = 7.94
 R = 250.00
 L = 15.87
 E = 0.13

CURVE #8B
 PI Sta = 125+96.60
 $\Delta = 3^\circ-54'-08''$
 T = 8.52
 R = 250.00
 L = 17.03
 E = 0.15

ROUTE NO.	SECTION	COUNTY	TOTAL SHEETS	THIS SHEET
F.A.U. 6728	*	TAZEWELL	28	8

FED. RD. DIST. NO. 7 ILLINOIS PROJECT TE-00D4(110)
 *10-00109-00-BT
 CONTRACT NO. 89598



NOTE: ALL EXISTING UTILITIES ARE APPROXIMATE AND SHOWN FOR INFORMATION PURPOSES ONLY AND ARE TO BE VERIFIED IN THE FIELD BY THE CONTRACTOR.

