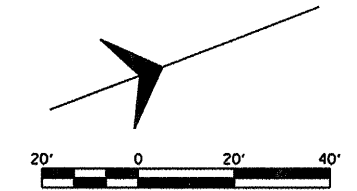
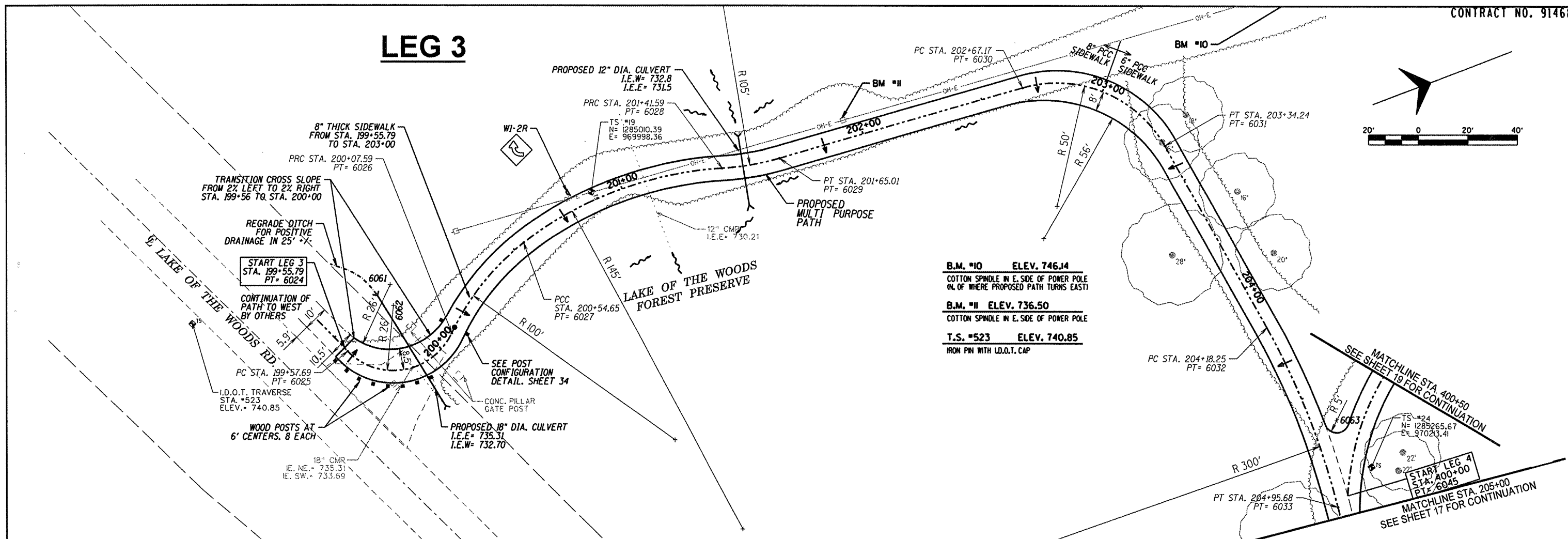


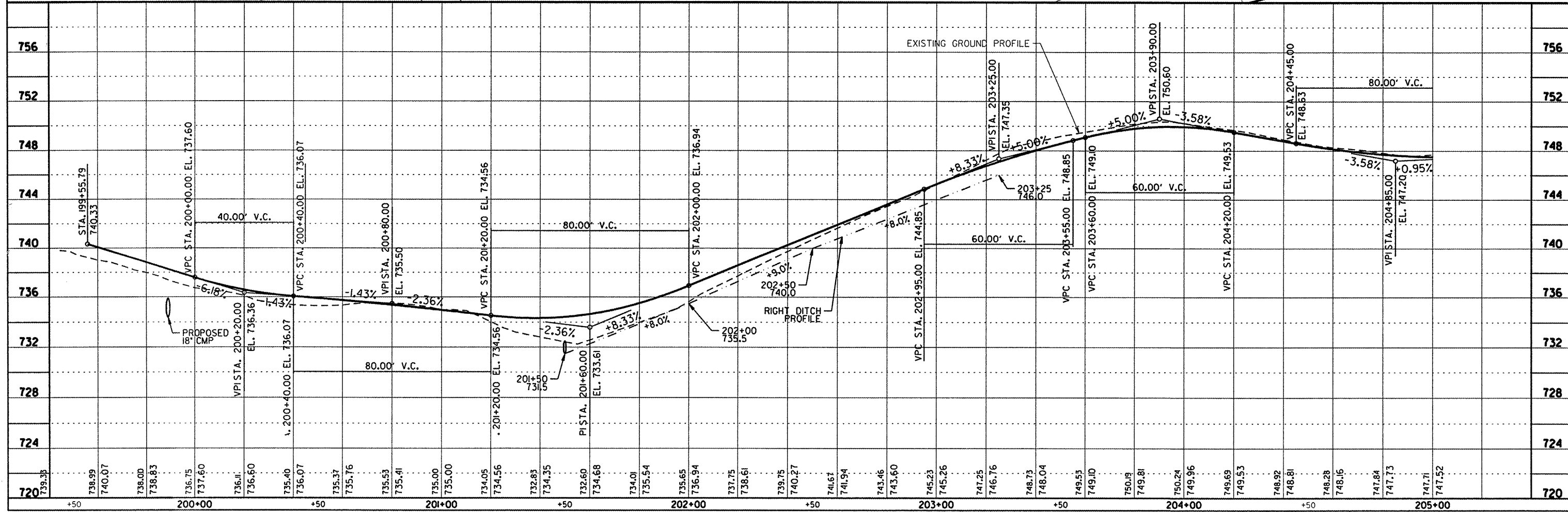
# LEG 3



**B.M. #10 ELEV. 746.14**  
COTTON SPINDLE IN E. SIDE OF POWER POLE (N. OF WHERE PROPOSED PATH TURNS EAST)

**B.M. #11 ELEV. 736.50**  
COTTON SPINDLE IN E. SIDE OF POWER POLE

**T.S. #523 ELEV. 740.85**  
IRON PIN WITH I.D.O.T. CAP



DESCRIPTION	
DATE	
REVISION	
PROJECT TITLE	VILLAGE OF MAHOMET & CC FOREST PRESERVE
SHEET TITLE	LAKE OF THE WOODS ROAD MULTI-PURPOSE PATHWAY PLAN AND PROFILE SHEET
DES. CMO	Sodemann and Associates, Inc.
DRN. MSD	300 NORTH WILSON STREET
CHK. EBH	CHAMPAIGN, ILLINOIS 61824-0657
APP. SRS	TEL 217 352-7688 FAX 217 352-1922
PROJECT NO.	1009
DATE	12-12-2011
SHEET	16
	OF 61 SHEETS