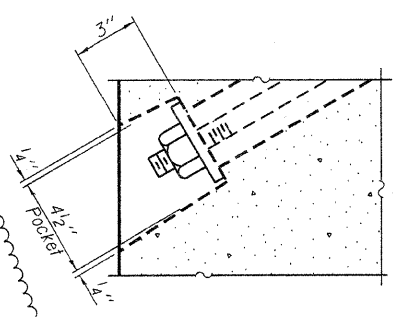


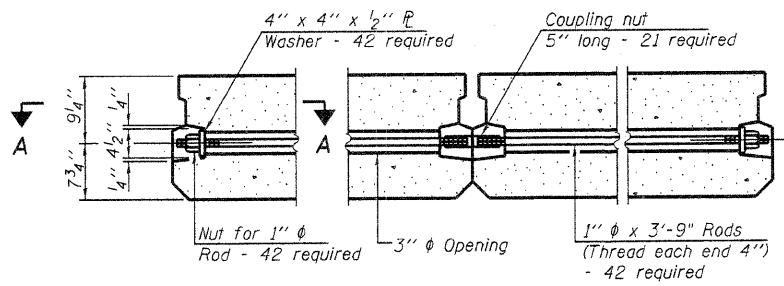
**FABRIC BEARING PAD**  
(Interior)      **FABRIC BEARING PAD**  
(Exterior)

**FIXED**

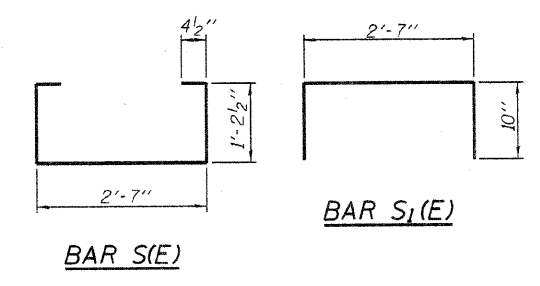
Notes:  
All bearing pads shall be 1" thick.  
Omit holes when using expansion bearings.  
Expansion bearing pad shall be bonded to the substructure.



**SECTION A-A**

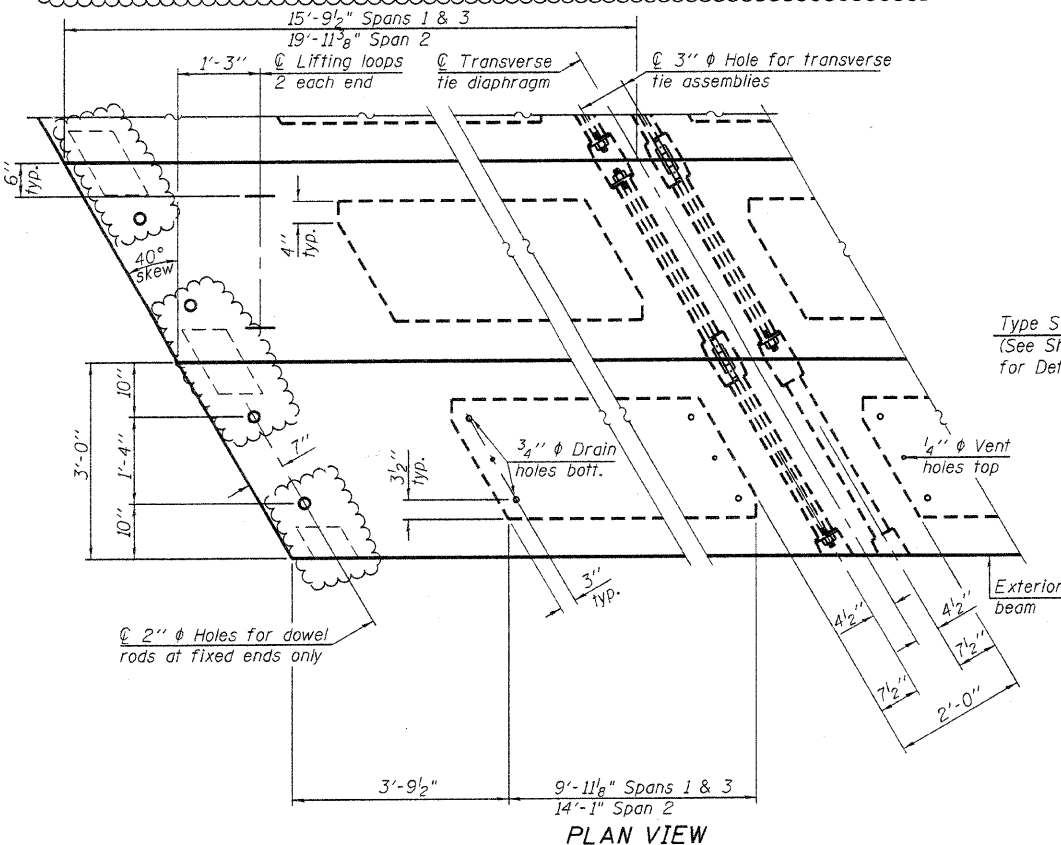


**TYPICAL TRANSVERSE TIE ASSEMBLY**

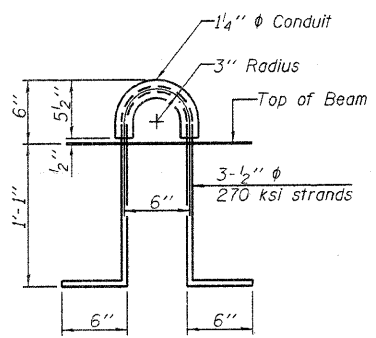


**BAR S(E)**

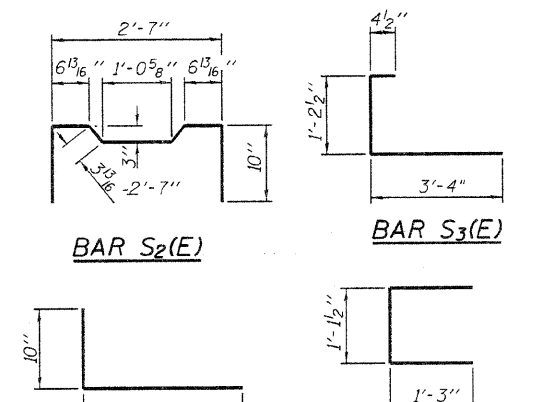
**BAR S1(E)**



**PLAN VIEW**

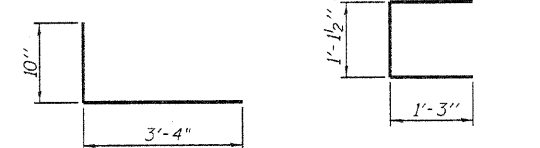


**LIFTING LOOP DETAIL**



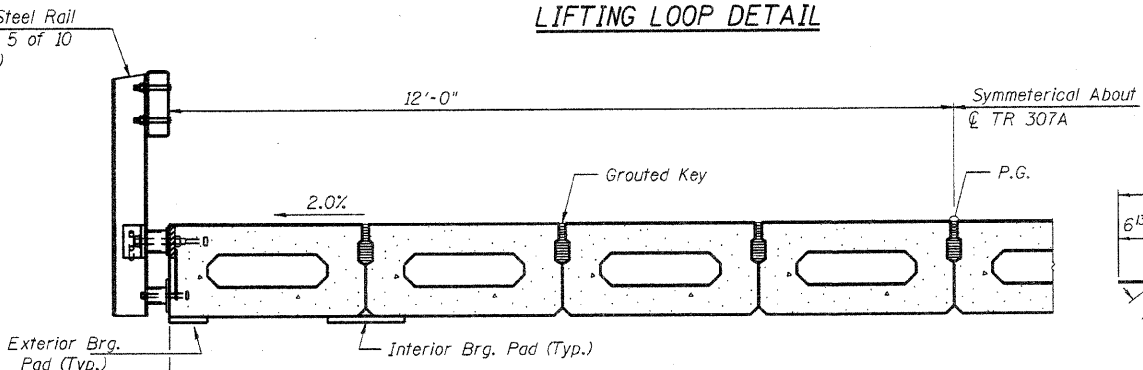
**BAR S2(E)**

**BAR S3(E)**

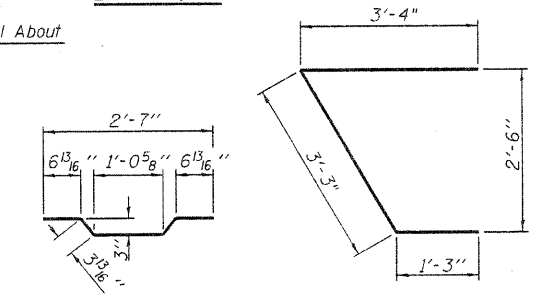


**BAR S4(E)**

**BAR U(E)**



**PARTIAL CROSS SECTION**



**BAR A1(E)**

**BAR U1(E)**

**NOTES**

Prestressing steel shall be uncoated high strength, low relaxation 7-wire strand, Grade 270. The nominal diameter shall be 1/2" and the nominal cross-sectional area shall be 0.153 sq. in. The 1" rods in the transverse tie assembly shall be tightened to a snug fit and the threads set. Pockets on exterior faces of bridge shall be filled with grout after transverse tie assembly is in place. Reinforcement bars shall conform to ASTM A 706, Grade 60. Two 3/8" fabric adjusting shims of the dimensions of the dimensions of the exterior bearing pad shall be provided for each bearing pad location. A minimum 2 1/2" diameter lifting pin shall be used to engage the lifting loops during handling. Corrosion Inhibitor, per Article 1020.05(b)(12) and 1021.06 of the Standard Specifications, shall be used in the concrete for precast prestressed concrete deck beams. Compressive strength of prestressed concrete, f'c, shall be 6000 psi. Compressive strength of prestressed concrete at release, f'ci, shall be 5000 psi.

**BILL OF MATERIAL**

Precast Prestressed Conc. Deck Bms. (17" depth)	Sq. Ft.	2473
-------------------------------------------------	---------	------



PD-1736-RD 7-1-10

FILE NAME = J:\09024\CADD\CAD\sheets\SN 011-3417\0804118-B9829-Sht-PPC Deck Beam.dgn	USER NAME = amandeh	DESIGNED - NIEWINSKI	REVISED - AH 9/09/2011
PLOT SCALE = 0.017 ft/ft / in.		CHECKED - TRELLO	REVISED -
PLOT DATE = 4/10/2012		DRAWN - VERENSKI	REVISED -
		CHECKED - TRELLO	REVISED -

STATE OF ILLINOIS  
DEPARTMENT OF TRANSPORTATION

17" x 36" PPC DECK BEAM DETAILS  
STRUCTURE NO. 011-3417

SHEET NO. 4 OF 10 SHEETS

T.R. RTE. 307A	SECTION 08-04118-00-BR	COUNTY CHRISTIAN	TOTAL SHEETS 26	SHEET NO. 12
CONTRACT NO. 93567			ILLINOIS FED. AID PROJECT: BR05-0021 (62)	

PLOT DRIVER = PLOTTER