

GENERAL NOTES

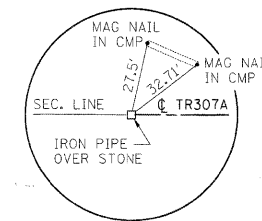
- WHEN SECTION OR SUB-SECTION MONUMENTS ARE ENCOUNTERED THE ENGINEER SHALL BE NOTIFIED BEFORE SUCH MONUMENTS ARE REMOVED. THE CONTRACTOR SHALL PROTECT AND CAREFULLY PRESERVE ALL PROPERTY MARKS AND MONUMENT UNTIL THE OWNER OR AN AUTHORIZED SURVEYOR OR AGENT HAS WITNESSED OR OTHERWISE REFERENCED THEIR LOCATION.
- SEE SPECIAL PROVISIONS FOR SEEDING RATES.
- ALL PLAN ELEVATIONS REPRESENT ASSUMED DATUM.
- THE LOCATIONS OF THOSE BURIED AND ABOVE GROUND UTILITIES SHOWN ARE APPROXIMATE, ARE SHOWN FOR CONTRACTOR INFORMATIONAL USE ONLY, AND ARE NOT TO BE REFERENCED FOR CONSTRUCTION PURPOSES. THE IMPLIED PRESENCE OR ABSENCE OF UTILITIES IS NOT TO BE CONSTRUED BY THE OWNER, ENGINEER, CONTRACTOR, OR SUBCONTRACTOR TO BE AN ACCURATE AND COMPLETE REPRESENTATION OF UTILITIES THAT MAY OR MAY NOT EXIST ON THE CONSTRUCTION SITE. BURIED AND ABOVE GROUND UTILITY LOCATION, IDENTIFICATION, AND MARKING ARE THE SOLE RESPONSIBILITY OF THE CONTRACTOR. REROUTING, DISCONNECTION, PROTECTION, ETC. OF ANY UTILITIES MUST BE COORDINATED BETWEEN THE CONTRACTOR, UTILITY COMPANY, AND OWNER. SITE SAFETY, INCLUDING THE AVOIDANCE OF HAZARDS ASSOCIATED WITH BURIED AND ABOVE GROUND UTILITIES, REMAINS THE SOLE RESPONSIBILITY OF THE CONTRACTOR. THE CONTRACTOR SHALL BE RESPONSIBLE FOR PROTECTING UTILITY PROPERTY FROM CONSTRUCTION OPERATIONS AS OUTLINED IN ARTICLE 107.31 OF THE STANDARD SPECIFICATIONS. J.U.L.I.E. MEMBERS ACTIVE IN THE VICINITY OF THE PROJECT ARE LISTED ON THE COVER SHEET.
- APPLICATION RATES:
 AGGREGATE BASE COURSE: 2.05 TONS/CU YD
 COVER & SEAL COAT AGGREGATE: 25 LBS/SQ YD
 BITUMINOUS MATL'S (PRIME COAT): 0.375 GAL/SQ YD
 BITUMINOUS MATL'S (C & S COATS): 0.35 GAL/SQ YD
 STONE RIPRAP, CLASS A4: 1.5 TONS/CU YD
 TEMPORARY DITCH CHECKS: 10 FOOT/EA LOCATION

SUMMARY OF QUANTITIES

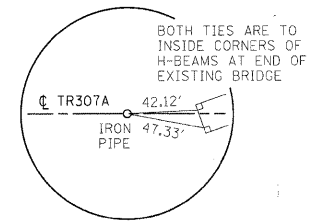
PAY ITEM	ITEM	UNIT	TOTAL
20100110	TREE REMOVAL (6 TO 15 UNITS DIAMETER)	UNIT	374
20100210	TREE REMOVAL (OVER 15 UNITS DIAMETER)	UNIT	126
20200100	EARTH EXCAVATION	CU YD	2,194
20300100	CHANNEL EXCAVATION	CU YD	191
20400800	FURNISHED EXCAVATION	CU YD	3,195
28000250	TEMPORARY EROSION CONTROL SEEDING	POUND	600
28000305	TEMPORARY DITCH CHECKS	FOOT	220
28000400	PERIMETER EROSION BARRIER	FOOT	644
28100207	STONE RIPRAP, CLASS A4	TON	448
28200200	FILTER FABRIC	SQ YD	673
35101400	AGGREGATE BASE COURSE, TYPE B	TON	1,140
40300100	BITUMINOUS MATERIALS (PRIME COAT)	GALLON	1,000
40300300	BITUMINOUS MATERIALS (COVER AND SEAL COATS)	GALLON	2,520
40300500	COVER COAT AGGREGATE	TON	62
40300600	SEAL COAT AGGREGATE	TON	31
48101200	AGGREGATE SHOULDERS, TYPE B	TON	50
50100100	REMOVAL OF EXISTING STRUCTURES	EACH	1
50200100	STRUCTURE EXCAVATION	CU YD	28
50200300	COFFERDAM EXCAVATION	CU YD	81
50201101	COFFERDAM (TYPE 1) (LOCATION-1)	EACH	1
50201102	COFFERDAM (TYPE 1) (LOCATION-2)	EACH	1
50300225	CONCRETE STRUCTURES	CU YD	119.2
50400305	PRECAST PRESTRESSED CONCRETE DECK BEAMS (17" DEPTH)	SQ FT	2,473
50800205	REINFORCEMENT BARS, EPOXY COATED	POUND	10,280
50900205	STEEL RAILING, TYPE S-1	FOOT	210
51200957	FURNISHING METAL SHELL PILES, 12" X 0.25"	FOOT	762
51202305	DRIVING PILES	FOOT	762
51203200	TEST PILE, METAL SHELLS	EACH	2
51500100	NAME PLATES	EACH	1
63100075	TRAFFIC BARRIER TERMINAL, TYPE 5A	EACH	2
63100167	TRAFFIC BARRIER TERMINAL, TYPE 1, SPECIAL (TANGENT)	EACH	2
67100100	MOBILIZATION	L SUM	1
70101830	TRAFFIC CONTROL AND PROTECTION, STANDARD BLR 21	L SUM	1
78201000	TERMINAL MARKERS - DIRECT APPLIED	EACH	2
X2501000	SEEDING, CLASS 2 (SPECIAL)	ACRE	2.0

* SPECIAL PROVISION
 Δ SPECIALTY ITEMS
 CONSTRUCTION TYPE CODE: 0011 (X080)

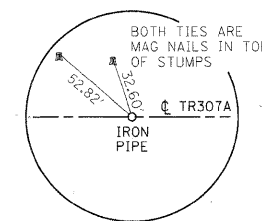
CENTERLINE TIES



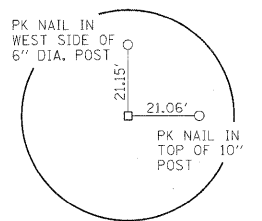
P.O.T. STA. 2+35.92
 SW COR., SE 1/4, SW 1/4, SEC. 9,
 T11N, R2W, 3RD P.M.
 IRON PIPE OVER STONE
 N 999,111,6009
 E 2,535,494,4470



P.O.T. STA. 15+00.00
 IRON PIPE
 N 999,111,2983
 E 2,536,758,5270



P.O.T. STA. 18+00.00
 IRON PIPE
 N 999,111,2265
 E 2,537,058,5270



STA. 28+87.35, 20,40' RT
 SE COR., SW 1/4, SE 1/4, SEC. 9
 T11N, R2W, 3RD P.M.
 STONE
 N 999,090,5702
 E 2,538,145,8741

GREENE & BRADFORD, INC.
 OF SPRINGFIELD



FILE NAME =
 #FILEL#
 G&B PROJECT: 09029
 PLOT DRIVER = #PLCTTR#

USER NAME = #USER#
 PLOT SCALE = #SCALE#
 PLOT DATE = #DATE#

DESIGNED - WCB
 DRAWN - MDS
 CHECKED - WCB
 DATE - 6/29/09

REVISED - AH 04/20/11
 REVISED - AH 09/09/11
 REVISED -
 REVISED -

STATE OF ILLINOIS
 DEPARTMENT OF TRANSPORTATION

TR 307A
 SUMMARY OF QUANTITIES, GENERAL NOTES & CENTERLINE TIES
 SCALE: SHEET NO. 1 OF 1 SHEETS STA. TO STA.

T.R. RTE.	SECTION	COUNTY	TOTAL SHEETS	SHEET NO.
307A	08-04118-00-BR	CHRISTIAN	26	2
FED. ROAD DIST. NO. [ILLINOIS] FED. AID PROJECT BROS-0021 (178)			CONTRACT NO. 93567	