

**SCHEDULE OF SURVEY MONUMENTS**

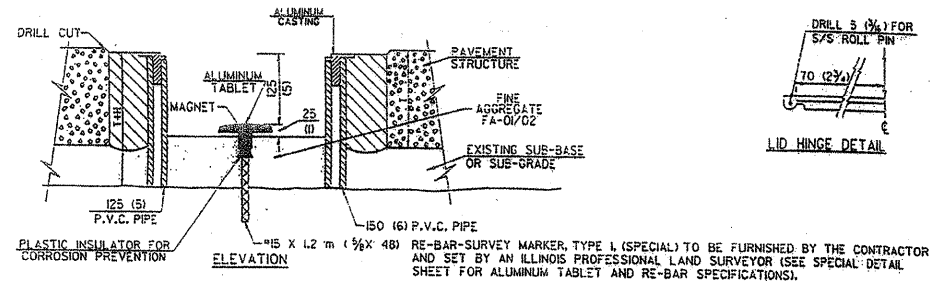
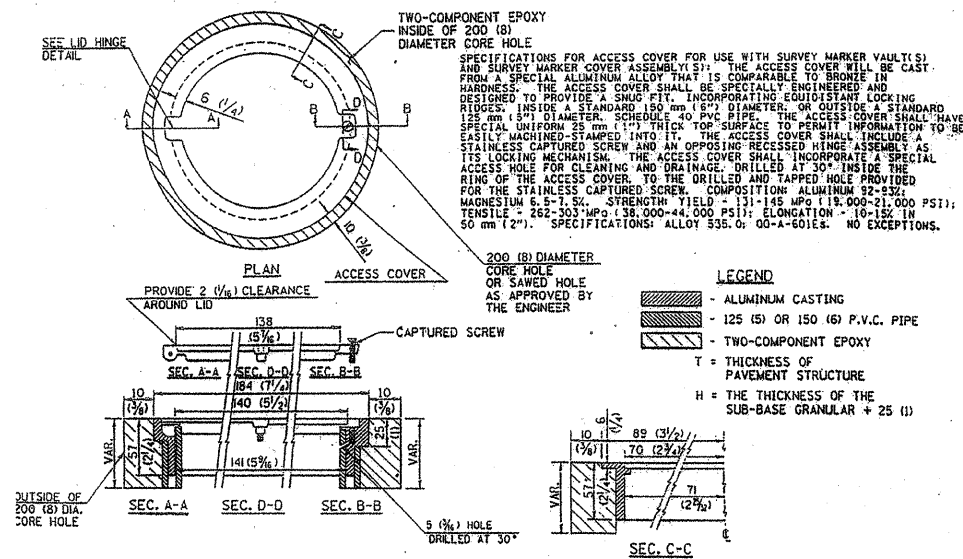
STA	O/S	QTY
35+22.25	3.23 RT	1.0
61+83.15	7.13 LT	1.0
88+15.80	1.37 RT	1.0
<b>TOTAL</b>		<b>3.0 EACH</b>

**FURNISH & ERECTING R.O.W. MARKERS**

STA	O/S	QUANTITY (EACH)
317+00	40' LT	1
317+25	50' LT	1
319+00	45' LT	1
9+25	50' RT	1
9+35	60' LT	1
9+50	45' LT	1
9+50	45' RT	1
11+00	40' LT	1
11+00	40' RT	1
12+00	40' LT	1
13+00	35' RT	1
14+00	35' LT	1
14+00	35' RT	1
15+00	30' RT	1
28+00	35' LT	1
28+00	30' RT	1
36+00	40' LT	1
36+00	35' RT	1
37+00	30' LT	1
37+00	30' RT	1
40+00	30' RT	1
41+00	30' LT	1
41+00	35' RT	1
43+00	40' LT	1
43+00	40' RT	1
50+00	40' RT	1
51+00	40' LT	1
51+00	35' RT	1
52+00	35' LT	1
54+00	30' RT	1
55+00	30' RT	1
56+00	35' LT	1
56+00	35' RT	1
58+00	45' LT	1
58+00	40' RT	1
59+00	45' RT	1
60+00	45' LT	1
61+00	50' LT	1
61+40	50' LT	1
61+47	45' RT	1
61+47	350' RT	1
61+62	350' RT	1
61+67	75' LT	1
62+07	75' LT	1
62+07	75' RT	1
62+25	50' LT	1
62+25	45' RT	1
63+00	50' LT	1
63+00	40' LT	1
63+00	45' RT	1
65+00	40' LT	1
65+00	40' RT	1
69+00	30' LT	1
71+00	40' LT	1
71+00	30' RT	1
73+00	45' LT	1
73+00	40' RT	1
76+00	45' LT	1
77+00	55' LT	1
78+00	50' LT	1
78+00	40' RT	1
79+00	45' RT	1
80+00	50' LT	1
80+00	35' RT	1
81+00	40' LT	1
82+00	35' LT	1
83+00	35' LT	1
84+00	45' LT	1
85+00	45' LT	1
85+00	30' RT	1
86+00	35' LT	1
<b>TOTAL</b>		<b>71</b>

**DETAIL OF SURVEY MARKER VAULT**

FOR RESET LAND SURVEY MONUMENTS IN RIGID AND COMPOSITE PAVEMENTS



**GENERAL NOTES**

- ALUMINUM CASTING SHALL BE EITHER PLACED OVER A 125 mm (5") P.V.C. PIPE OR INSIDE OF A 150 mm (6") P.V.C. PIPE.
- BACKFILL WITH FINE AGGREGATE-FA-01/02.
- WORK SHALL NOT START ON THIS ITEM UNTIL THE FINAL LIFT OF CLASS 1 HAS BEEN COMPLETED.
- SEE SPECIAL PROVISION "PRESERVATION OF LAND SURVEY MONUMENTS".
- THIS WORK WILL BE PAID FOR AT THE CONTRACT UNIT PRICE EACH FOR SURVEY MARKER VAULT WHICH PRICE SHALL INCLUDE ALL LABOR AND MATERIAL AS SPECIFIED INCLUDING CORING, EPOXY AND FA-01/02 AGGREGATE AND NO ADDITIONAL COMPENSATION WILL BE ALLOWED.
- THE CASTING SHALL BE ANCHORED IN THE 200 mm (8") DIAMETER CORE HOLE WITH TWO-COMPONENT EPOXY CONFORMING TO APPLICABLE PORTIONS OF ARTICLE 1025.01(125.01) OF THE STANDARD SPECIFICATIONS.
- ALL SURVEY MARKER (VAULTS) SHALL BE PLACED 6 mm (1/4") BELOW THE FINAL SURFACE.
- THE 200 mm (8") DIAMETER CORE HOLE SHALL BE SUBJECT TO THE APPROVAL OF THE ENGINEER.

All dimensions are in millimeters (inches) unless otherwise shown.

**BILL OF MATERIAL**

ALUMINUM CASTING OF THE DIMENSIONS AND SPECIFICATIONS SHOWN OR OTHER SUBJECT TO ENGINEER'S APPROVAL OF SHOP DRAWINGS.
125 mm OR 150 mm (5" OR 6") P.V.C. PIPE, SCHEDULE 40, ALUMINUM TABLET, STAMPED IN ACCORDANCE WITH STANDARD 2135.
15 X 1.2 m (1/2" X 48") RE-BAR, EPOXY AND FA-01/02 AGGREGATE.

SHELBY COUNTY  
NEOGA ROAD PROJECT  
F.A.S. 656  
SECTION 09-00271-00-RS  
DETAILS