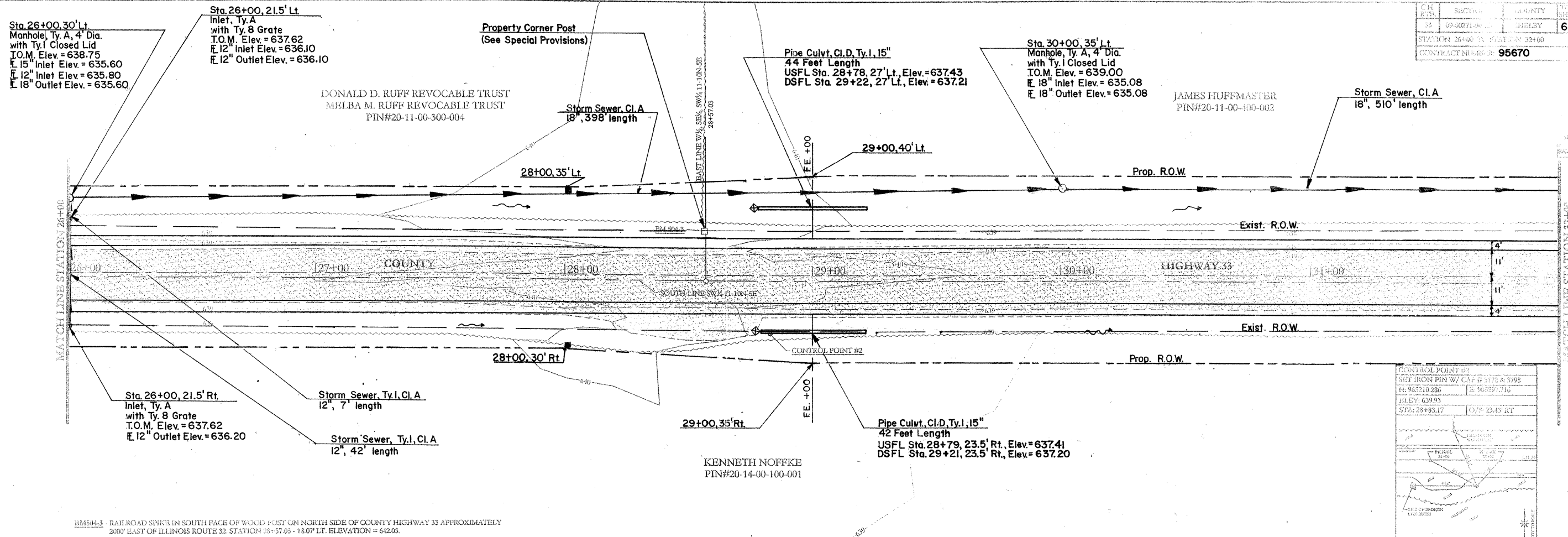


CH. RTES.	SECTION	COUNTY	TOWNSHIP	RANGE
33	69-30271-00	WABASH	62	20

STATION 26+00 TO STATION 32+00
CONTRACT NUMBER: 95670



BM504-3 - RAILROAD SPIKE IN SOUTH FACE OF WOOD POST ON NORTH SIDE OF COUNTY HIGHWAY 33 APPROXIMATELY 200' EAST OF ILLINOIS ROUTE 32. STATION 05+57.05 - 18.07' LT. ELEVATION = 642.03.

