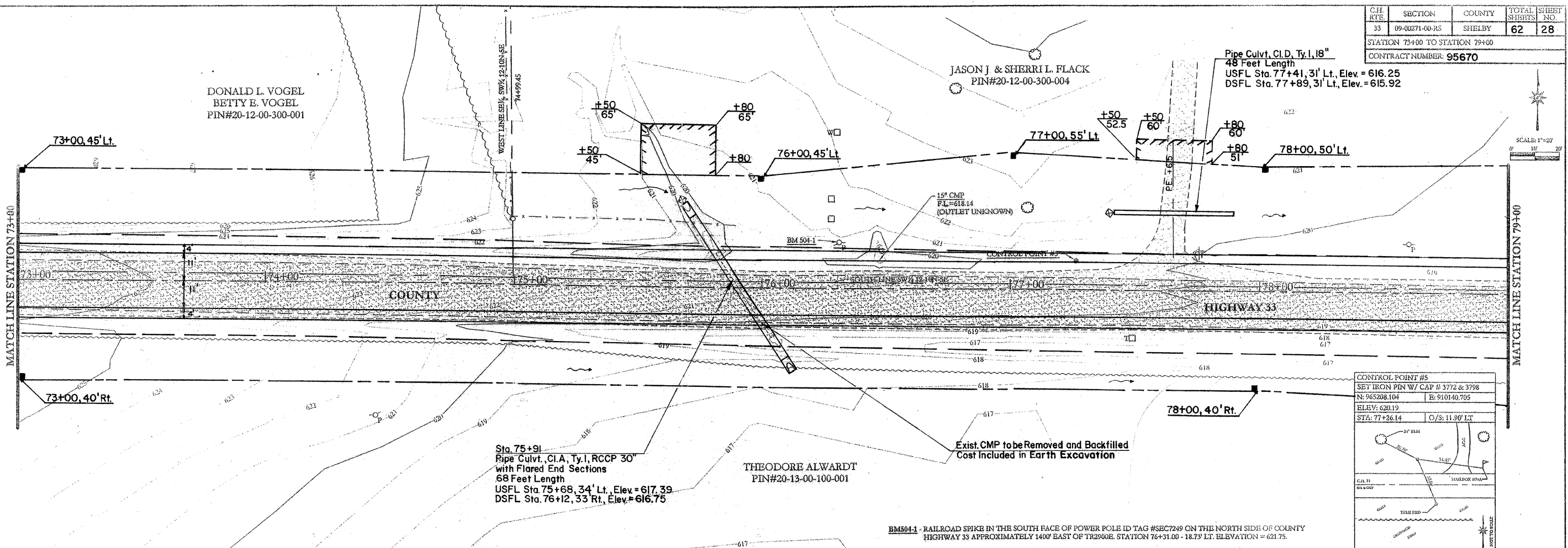


C.H. RTE	SECTION	COUNTY	TOTAL SHEETS	SHEET NO.
33	09-00271-00-05	SHELBY	62	28

STATION 73+00 TO STATION 79+00
CONTRACT NUMBER: 95670



CONTROL POINT #5
SET IRON PIN W/ CAP # 3772 & 3798
N: 965208.104 B: 910140.705
ELEV: 620.19
STA: 77+26.14 C/S: 11.90' LT

C.H. 33
05' x 05' 15' CMP
TOLERANCE
NOT TO SCALE

Sta. 75+91
Pipe Culvt. Cl. A, Ty. I, RCCP 30"
with Flared End Sections
68 Feet Length
USFL Sta. 75+68, 34' Lt., Elev. = 617.39
DSFL Sta. 76+12, 33 Rt., Elev. = 616.75

Exist. CMP to be Removed and Backfilled
Cost Included in Earth Excavation

BM504-1 - RAILROAD SPIKE IN THE SOUTH FACE OF POWER POLE ID TAG #SEC749 ON THE NORTH SIDE OF COUNTY HIGHWAY 33 APPROXIMATELY 140' EAST OF TR2900R. STATION 76+31.00 - 18.73' LT. ELEVATION = 621.75.

