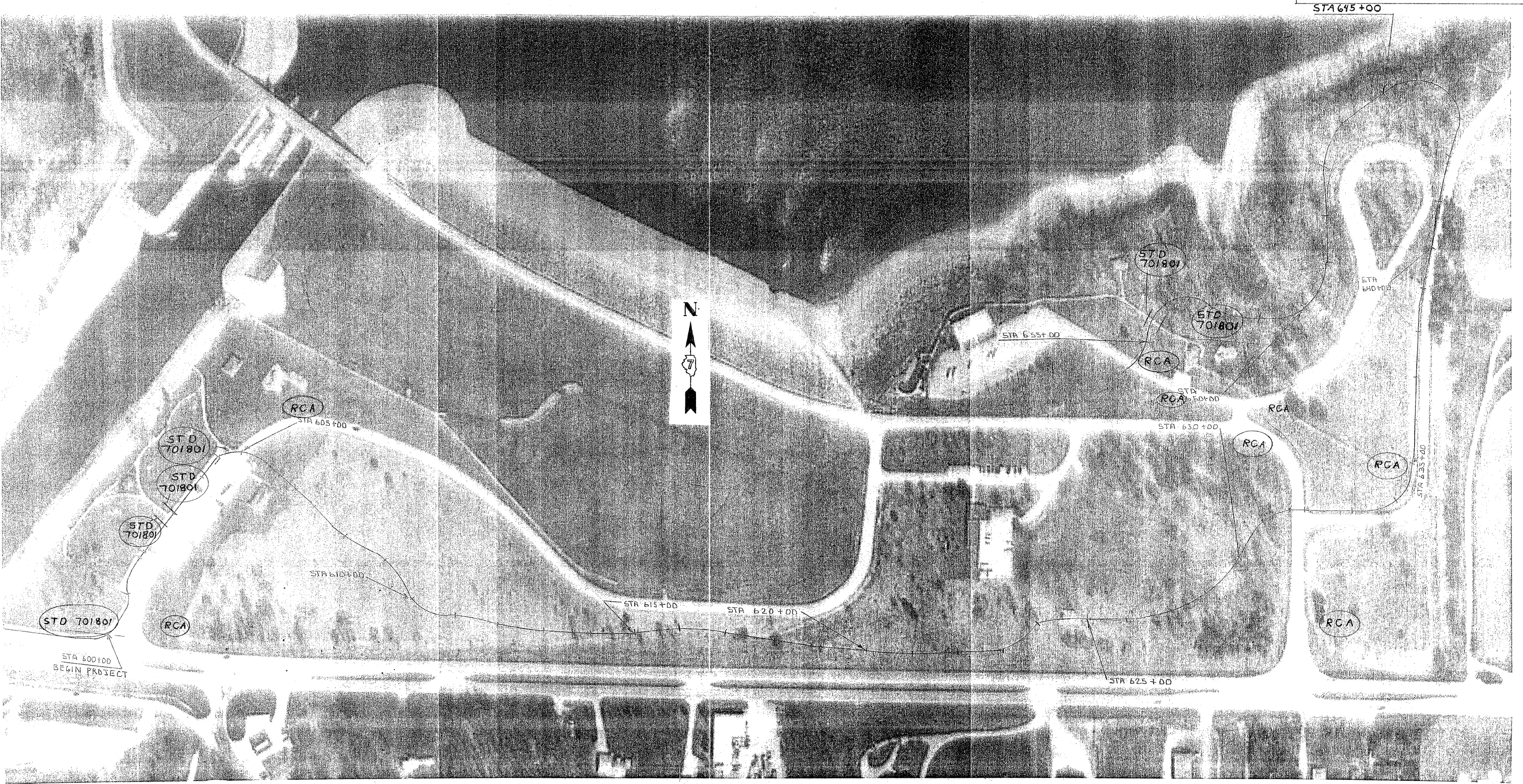


TRAFFIC CONTROL LAYOUT



LEGEND

- RCA = 48" X 48" ROAD CONSTRUCTION AHEAD WITH A FLASHING LIGHT
- STD 701801 = SIDEWALK CLOSURE

GENERAL DACEY TRAIL PHASE 6			
SCALE: N/A	APPROVED BY: SAS	DRAWN BY: CRS	DATE: 11-05-11
TRAFFIC CONTROL LAYOUT		REVISED: KPP	DRAWING NUMBER