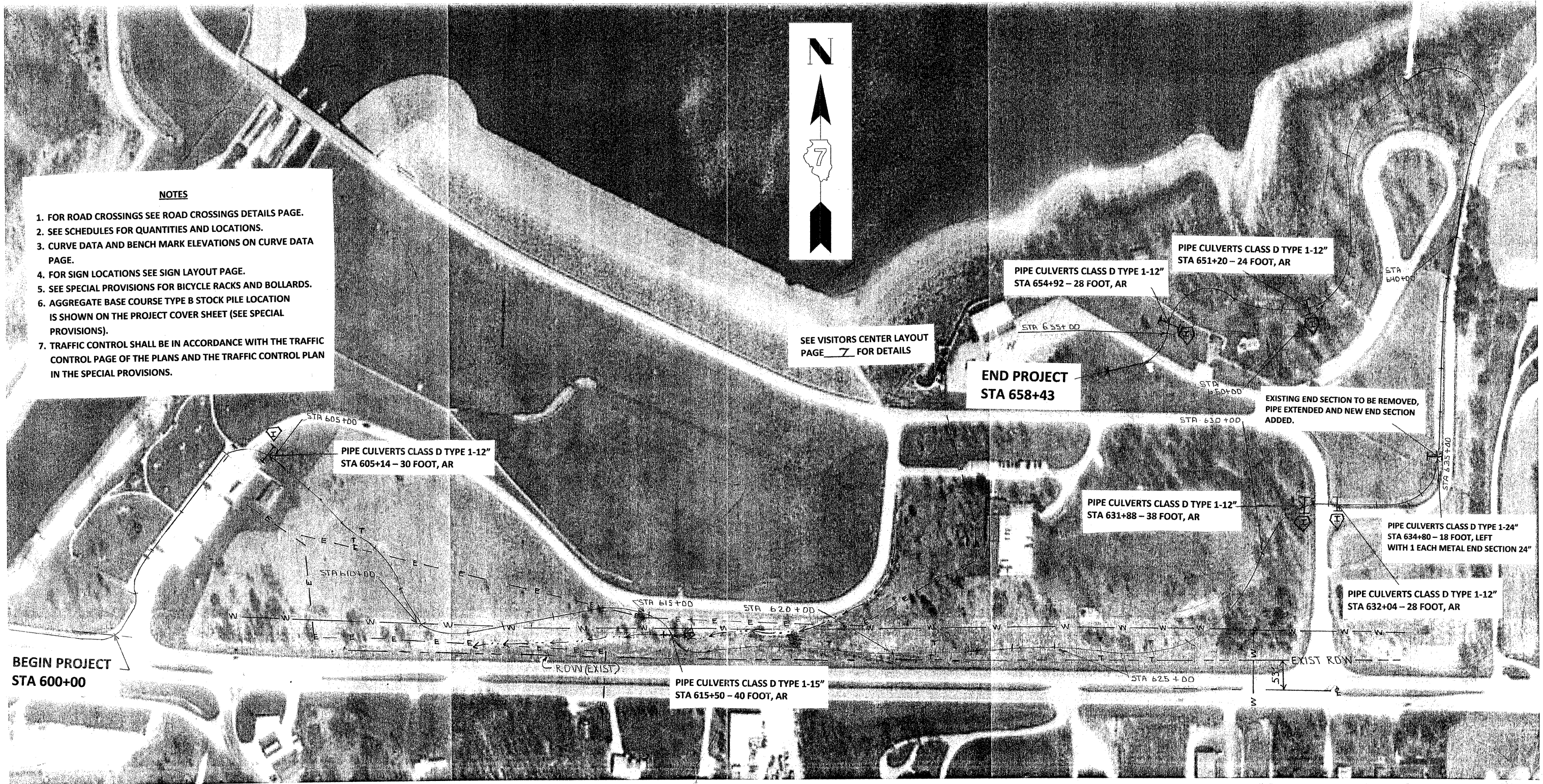
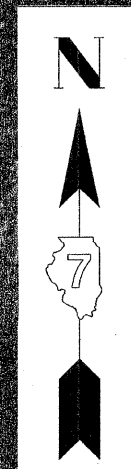


NOTES

1. FOR ROAD CROSSINGS SEE ROAD CROSSINGS DETAILS PAGE.
2. SEE SCHEDULES FOR QUANTITIES AND LOCATIONS.
3. CURVE DATA AND BENCH MARK ELEVATIONS ON CURVE DATA PAGE.
4. FOR SIGN LOCATIONS SEE SIGN LAYOUT PAGE.
5. SEE SPECIAL PROVISIONS FOR BICYCLE RACKS AND BOLLARDS.
6. AGGREGATE BASE COURSE TYPE B STOCK PILE LOCATION IS SHOWN ON THE PROJECT COVER SHEET (SEE SPECIAL PROVISIONS).
7. TRAFFIC CONTROL SHALL BE IN ACCORDANCE WITH THE TRAFFIC CONTROL PAGE OF THE PLANS AND THE TRAFFIC CONTROL PLAN IN THE SPECIAL PROVISIONS.



SEE VISITORS CENTER LAYOUT PAGE 7 FOR DETAILS

**END PROJECT
STA 658+43**

EXISTING END SECTION TO BE REMOVED, PIPE EXTENDED AND NEW END SECTION ADDED.

**BEGIN PROJECT
STA 600+00**

GENERAL DACEY TRAIL PHASE 6

SCALE: N/A	APPROVED BY: SAS	DRAWN BY: CRS
DATE:	REVISED: KPP	

PIPE CULVERT AND EROSION PAGE

DRAWING NUMBER