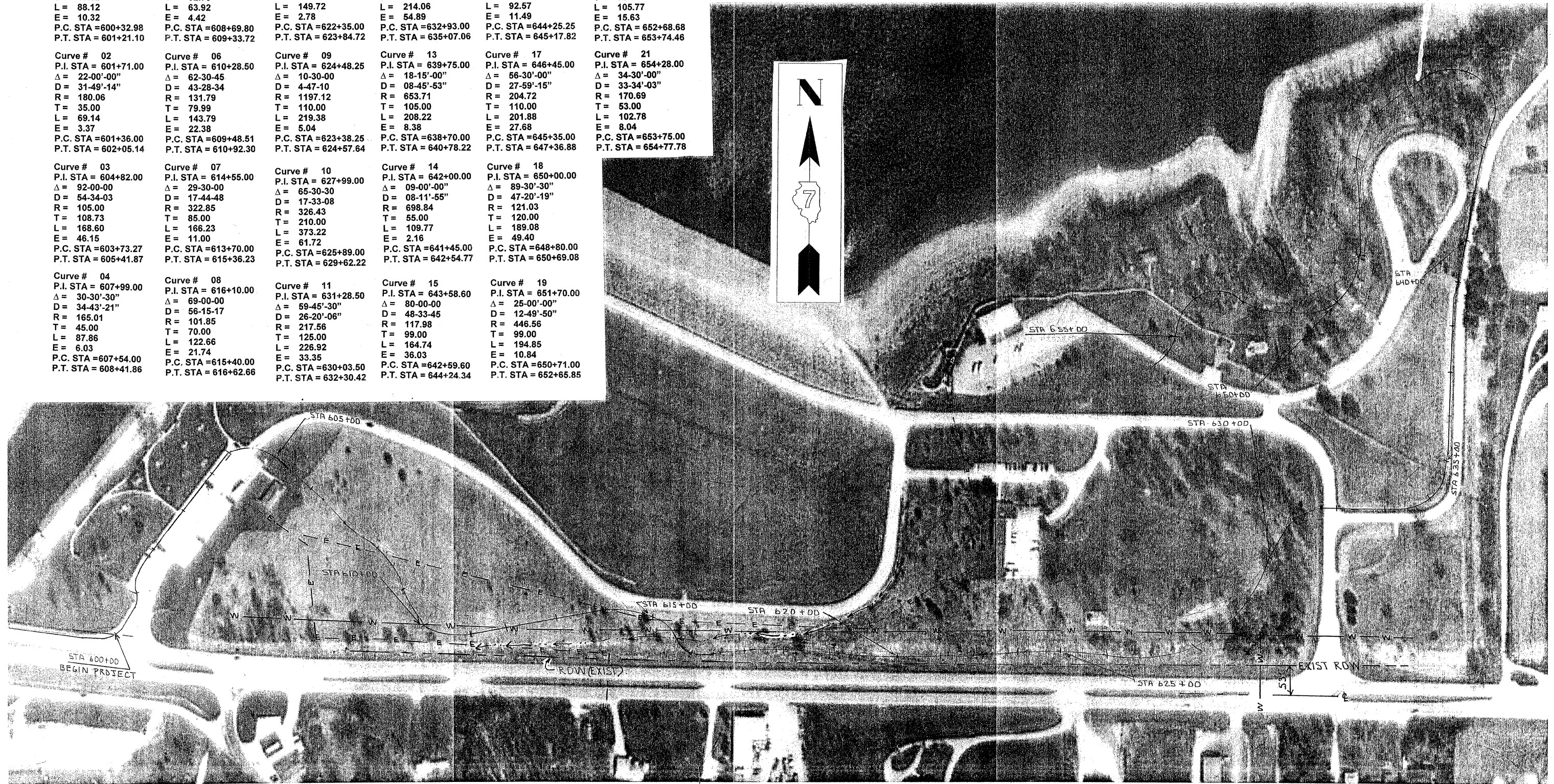
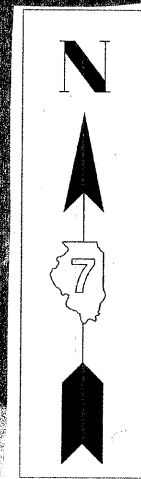


Curve # 01 P.I. STA = 600+80.00 Δ = 49-30'-00" D = 56-10-20 R = 102.00 T = 47.02 L = 88.12 E = 10.32 P.C. STA = 600+32.98 P.T. STA = 601+21.10	Curve # 05 P.I. STA = 609+02.55 Δ = 30-45'-00" D = 48-06'-25" R = 119.10 T = 32.75 L = 63.92 E = 4.42 P.C. STA = 608+69.80 P.T. STA = 609+33.72	Curve # 08A P.I. STA = 618+10 Δ = 8-30'-15" D = 5-40-48 R = 1008.75 T = 75.00 L = 149.72 E = 2.78 P.C. STA = 622+35.00 P.T. STA = 623+84.72	Curve # 12 P.I. STA = 634+28.00 Δ = 88-30'-00" D = 41-20'-40" R = 138.58 T = 135.00 L = 214.06 E = 54.89 P.C. STA = 632+93.00 P.T. STA = 635+07.06	Curve # 16 P.I. STA = 644+75.00 Δ = 52-00'-00" D = 56-10-20 R = 102.00 T = 49.75 L = 92.57 E = 11.49 P.C. STA = 644+25.25 P.T. STA = 645+17.82	Curve # 20 P.I. STA = 653+27.00 Δ = 66-00'-15" D = 56-43-43 R = 101.00 T = 58.32 L = 105.77 E = 15.63 P.C. STA = 652+68.68 P.T. STA = 653+74.46
Curve # 02 P.I. STA = 601+71.00 Δ = 22-00'-00" D = 31-49'-14" R = 180.06 T = 35.00 L = 69.14 E = 3.37 P.C. STA = 601+36.00 P.T. STA = 602+05.14	Curve # 06 P.I. STA = 610+28.50 Δ = 62-30-45 D = 43-28-34 R = 131.79 T = 79.99 L = 143.79 E = 22.38 P.C. STA = 609+48.51 P.T. STA = 610+92.30	Curve # 09 P.I. STA = 624+48.25 Δ = 10-30-00 D = 4-47-10 R = 1197.12 T = 110.00 L = 219.38 E = 5.04 P.C. STA = 623+38.25 P.T. STA = 624+57.64	Curve # 13 P.I. STA = 639+75.00 Δ = 18-15'-00" D = 08-45'-53" R = 653.71 T = 105.00 L = 208.22 E = 8.38 P.C. STA = 638+70.00 P.T. STA = 640+78.22	Curve # 17 P.I. STA = 646+45.00 Δ = 56-30'-00" D = 27-59'-15" R = 204.72 T = 110.00 L = 201.88 E = 27.68 P.C. STA = 645+35.00 P.T. STA = 647+36.88	Curve # 21 P.I. STA = 654+28.00 Δ = 34-30'-00" D = 33-34'-03" R = 170.69 T = 53.00 L = 102.78 E = 8.04 P.C. STA = 653+75.00 P.T. STA = 654+77.78
Curve # 03 P.I. STA = 604+82.00 Δ = 92-00'-00" D = 54-34-03 R = 105.00 T = 108.73 L = 168.60 E = 46.15 P.C. STA = 603+73.27 P.T. STA = 605+41.87	Curve # 07 P.I. STA = 614+55.00 Δ = 29-30-00 D = 17-44-48 R = 322.85 T = 85.00 L = 166.23 E = 11.00 P.C. STA = 613+70.00 P.T. STA = 615+36.23	Curve # 10 P.I. STA = 627+99.00 Δ = 65-30-30 D = 17-33-08 R = 326.43 T = 210.00 L = 373.22 E = 61.72 P.C. STA = 625+89.00 P.T. STA = 629+62.22	Curve # 14 P.I. STA = 642+00.00 Δ = 09-00'-00" D = 08-11'-55" R = 698.84 T = 55.00 L = 109.77 E = 2.16 P.C. STA = 641+45.00 P.T. STA = 642+54.77	Curve # 18 P.I. STA = 650+00.00 Δ = 89-30'-30" D = 47-20'-19" R = 121.03 T = 120.00 L = 189.08 E = 49.40 P.C. STA = 648+80.00 P.T. STA = 650+69.08	
Curve # 04 P.I. STA = 607+99.00 Δ = 30-30'-30" D = 34-43'-21" R = 165.01 T = 45.00 L = 87.86 E = 6.03 P.C. STA = 607+54.00 P.T. STA = 608+41.86	Curve # 08 P.I. STA = 616+10.00 Δ = 69-00-00 D = 56-15-17 R = 101.85 T = 70.00 L = 122.66 E = 21.74 P.C. STA = 615+40.00 P.T. STA = 616+62.66	Curve # 11 P.I. STA = 631+28.50 Δ = 59-45'-30" D = 26-20'-06" R = 217.56 T = 125.00 L = 226.92 E = 33.35 P.C. STA = 630+03.50 P.T. STA = 632+30.42	Curve # 15 P.I. STA = 643+58.60 Δ = 80-00-00 D = 48-33-45 R = 117.98 T = 99.00 L = 164.74 E = 36.03 P.C. STA = 642+59.60 P.T. STA = 644+24.34	Curve # 19 P.I. STA = 651+70.00 Δ = 25-00'-00" D = 12-49'-50" R = 446.56 T = 99.00 L = 194.85 E = 10.84 P.C. STA = 650+71.00 P.T. STA = 652+65.85	



**BENCH MARKS**

B.M. #BB - "M" IN MUELLER ON FIRE HYDRANT SOUTH OF VISITORS CENTER BY THE ROAD, STA 658+43 3 FT. LT. ELEV. = 652.68

GENERAL DACEY TRAIL PHASE 6

SCALE:	APPROVED BY:	DRAWN BY:
DATE:		REVISED:
CURVE DATA PAGE		DRAWING NUMBER: