

ROUTE NO.	SECTION	COUNTY	TOTAL SHEETS	SHEET NO.
F.A.S. 554	07-00066-00-BR	MOULTRIE	14	1
FED. ROAD DIST. NO.		ILLINOIS CONTRACT NO. 95681		

**STATE OF ILLINOIS  
DEPARTMENT OF TRANSPORTATION  
DIVISION OF HIGHWAYS**

# PLANS FOR PROPOSED HIGHWAY BRIDGE PROGRAM

**SECTION 07-00066-00-BR  
C.H. 9 / F.A.S. 554  
MOULTRIE COUNTY  
PROPOSED STRUCTURE NO. 070-3032  
PROJECT BRS-0554(325)  
C-97-086-10**

**INDEX OF SHEETS**

SHEET NO.	DESCRIPTION
1.	COVER SHEET
2.	SUMMARY OF QUANTITIES AND GENERAL NOTES
3.	TYPICAL CROSS SECTIONS
4.-5.	PLAN AND PROFILE
6.-9.	STATION CROSS SECTIONS
10.-13.	BRIDGE PLANS
14.	BORINGS

**HIGHWAY STANDARDS:**

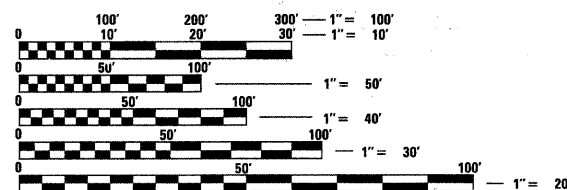
280001-06	TEMPORARY EROSION CONTROL SYSTEMS
515001-03	NAME PLATE FOR BRIDGES
701901-02	TRAFFIC CONTROL DEVICES
BLR 21-9	TYPICAL APPLICATION OF TRAFFIC CONTROL DEVICES FOR CONSTRUCTION ON RURAL LOCAL HIGHWAYS

**UTILITIES**

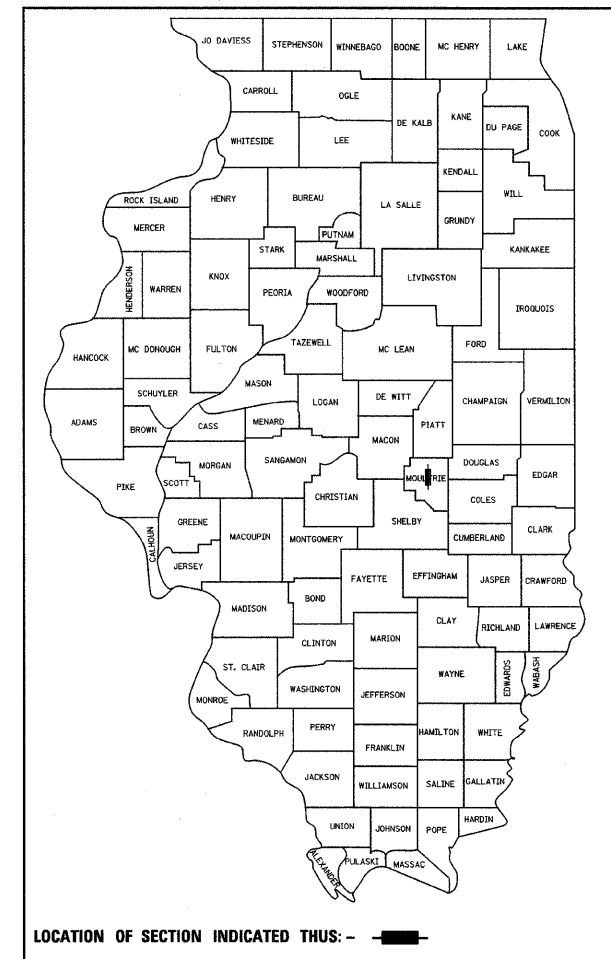
COLES-MOULTRIE ELECTRIC COOP  
104 DEWITT AVENUE EAST  
P.O. BOX 709  
MATTOON, ILLINOIS 61938-0709

LONG CREEK TOWNSHIP WATER  
2610 SALEM SCHOOL ROAD  
DECATUR, ILLINOIS 62521  
ATTN: TOM KITE  
217-864-5656

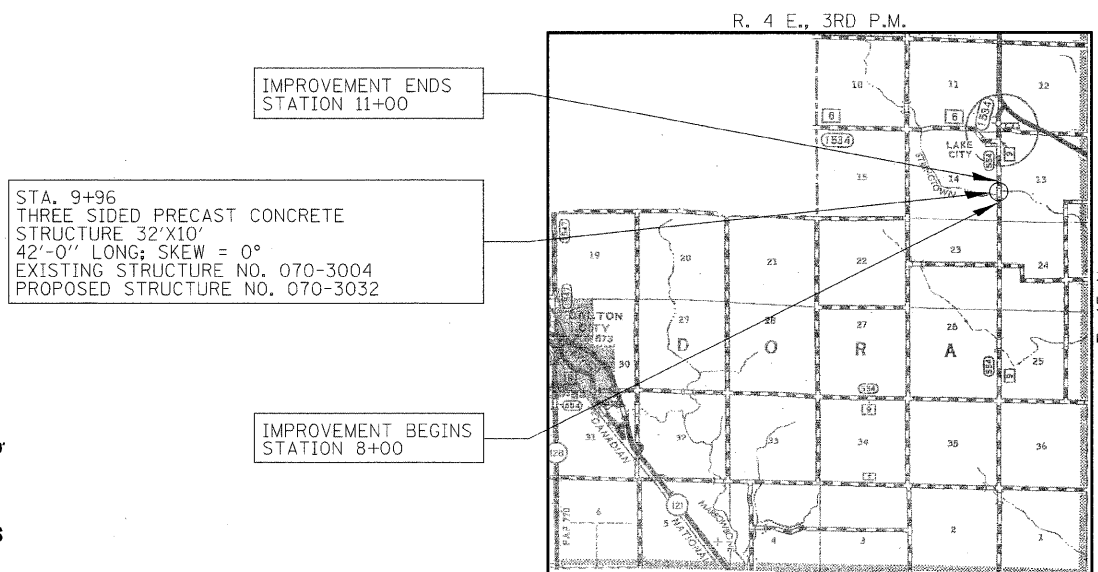
FRONTIER COMMUNICATIONS  
104 MULBERRY  
NORMAL, IL 61761



FULL SIZE PLANS HAVE BEEN PREPARED USING STANDARD ENGINEERING SCALES. REDUCED SIZED PLANS WILL NOT CONFORM TO STANDARD SCALES. IN MAKING MEASUREMENTS ON REDUCED PLANS, THE ABOVE SCALES MAY BE USED.



**FUNCTIONAL CLASSIFICATION:** RURAL COLLECTOR  
**DESIGN SPEED:** 40 MPH  
**DESIGN TRAFFIC:** 150 ADT



**LOCATION MAP**

APPROXIMATE SCALE: 0 1 MILE  
NET LENGTH OF SECTION = 300 FEET = 0.057 MILES

**WARNING**

**CALL 811  
BEFORE YOU DIG**

DIG NO: A1493590

**ILLINOIS DEPARTMENT OF TRANSPORTATION**

APPROVED 02/17 20 12  
*Jeffrey Bick*  
COUNTY ENGINEER

PASSED 02/29 20 12  
*Maurice East*  
DISTRICT SEVEN ENGINEER OF  
LOCAL ROADS & STREETS

Releasing For  
Bid Based on  
Limited Review

02/09 20 12  
*Ronald D. Schell*  
DEPUTY DIRECTOR OF HIGHWAYS  
REGION FOUR ENGINEER  
STATE OF ILLINOIS  
DEPARTMENT OF TRANSPORTATION

DATE: 2/17/2012

STEVEN  
W. MEGGINSON  
062-50051

**HAMPTON, LENZINI AND RENWICK, INC.**  
CIVIL ENGINEERS • STRUCTURAL ENGINEERS • LAND SURVEYORS

**HLR**  
3085 STEVENSON DRIVE, SUITE 201  
SPRINGFIELD, ILLINOIS 62703  
217.546.3400 www.hirengineering.com

184.000989  
ILLINOIS PROFESSIONAL DESIGN FIRM LS / PE / SE CORPORATION

PROJECT NUMBER: 07.0342.130 DATE: 02/16/12

**CONTRACT NO. 95681**

EXPIRES: 11/30/2013