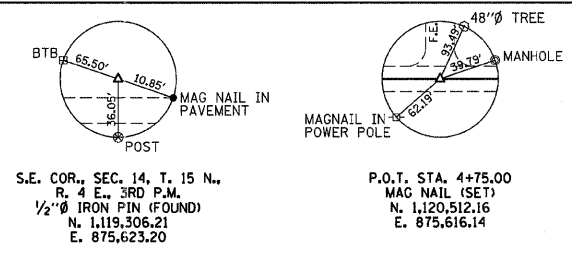


PLAN	SURVEYED	BY	DATE
	PLOTTED		
	CHECKED		
	BY		
	NO. OF WAY CHECKED		
	FILE NAME		

PROFILE	SURVEYED	BY	DATE
	PLOTTED		
	CHECKED		
	BY		
	NOTATION		
	NO.		

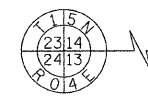
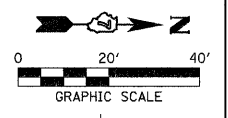


S.E. COR., SEC. 14, T. 15 N.,
R. 4 E., 3RD P.M.
1/2" Ø IRON PIN (FOUND)
N. 1,119,306.21
E. 875,623.20

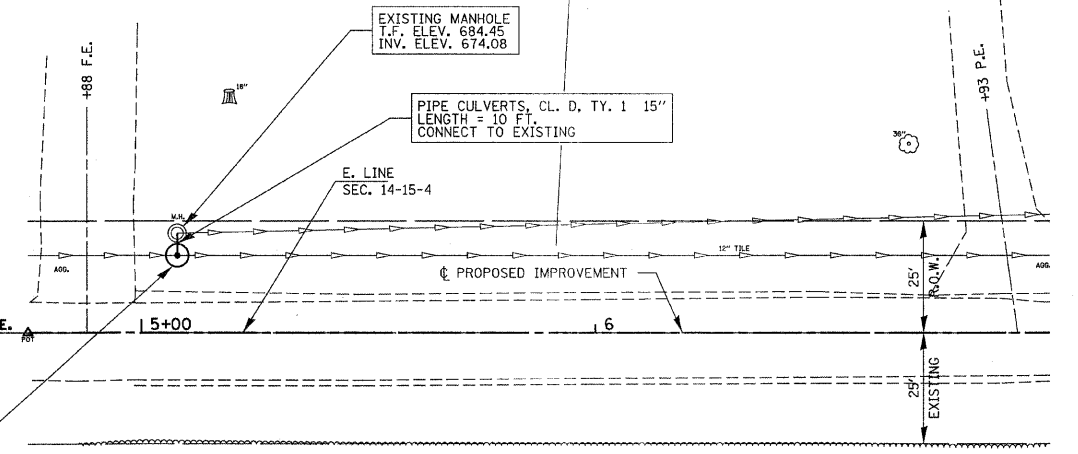
P.O.T. STA. 4+75.00
MAG NAIL (SET)
N. 1,120,512.16
E. 875,616.14

FRANCIS MORRIS
S/2, SE/4, SEC 14, T. 15 N., R. 4 E., 3RD P.M.

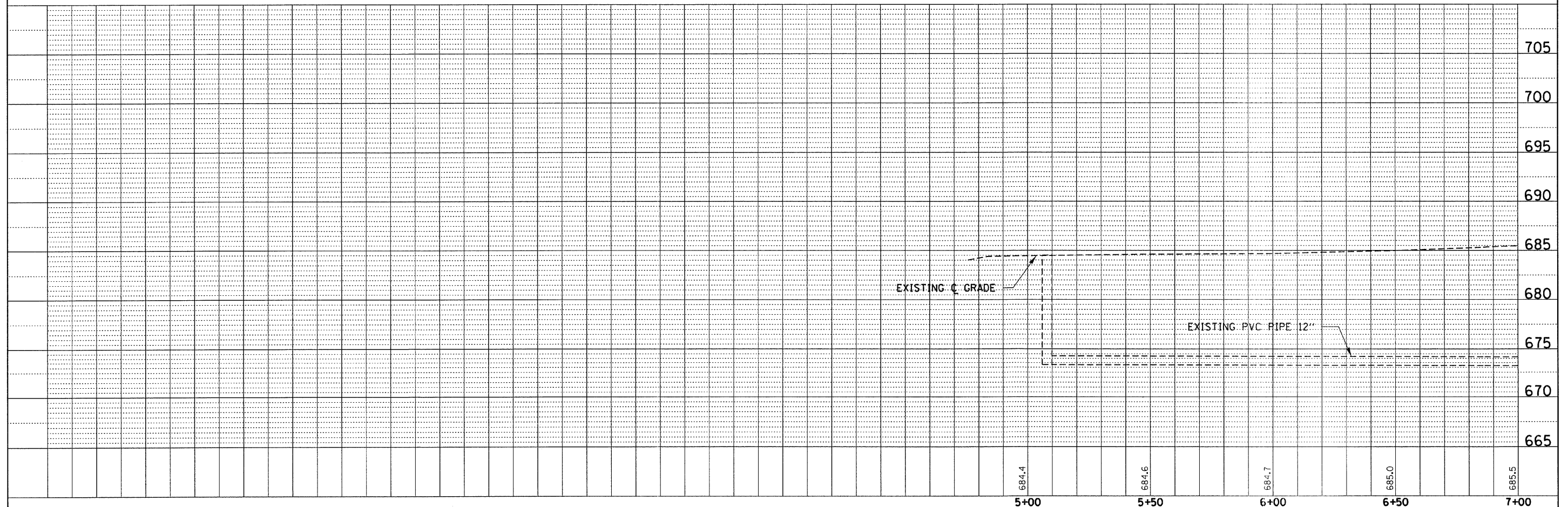
RICHARD R. & DONNA M. STREIBICH
SE/4, NE/4, SE/4, SEC 14, T. 15 N., R. 4 E., 3RD P.M.



LT. STA. 5+08.00
MANHOLE, TY. A, 4'-DIA., TY. 1, CL.
T.F. ELEV. 683.92
INV. ELEV. 674.10



PRAIRIE STATE BANK & TRUST 1048
SW/4, SEC 13, T. 15 N., R. 4 E., 3RD P.M.



FILE NAME = 070342-sht-pl.dgn	USER NAME =	DESIGNED - J.W.F.	REVISED -	STATE OF ILLINOIS MOULTRIE COUNTY HIGHWAY DEPARTMENT	PLAN & PROFILE C.H. 9			F.A.S.	SECTION	COUNTY	TOTAL SHEETS	SHEET NO.
HAMPTON, LENZINI AND RENWICK, INC. 3048 STEVENSON DRIVE, SUITE 201 SPRINGFIELD, ILLINOIS 62761	PLLOT SCALE =	DRAWN - D.T.M.	REVISED -		SCALE: 20HVS	SHEET NO. 1 OF 2 SHEETS	STA. 4+75 TO STA. 7+00	554	07-00066-00-BR	MOULTRIE	14	4
ILLINOIS PROFESSIONAL DESIGN FIRM LS / PE / SE CORP. 184.600888	PLLOT DATE = 2/9/2012	CHECKED - L.F.S.	REVISED -					CONTRACT NO. 95681				
		DATE - 02/09/12	REVISED -					ILLINOIS FED. AID PROJECT BRS-0554(325)				