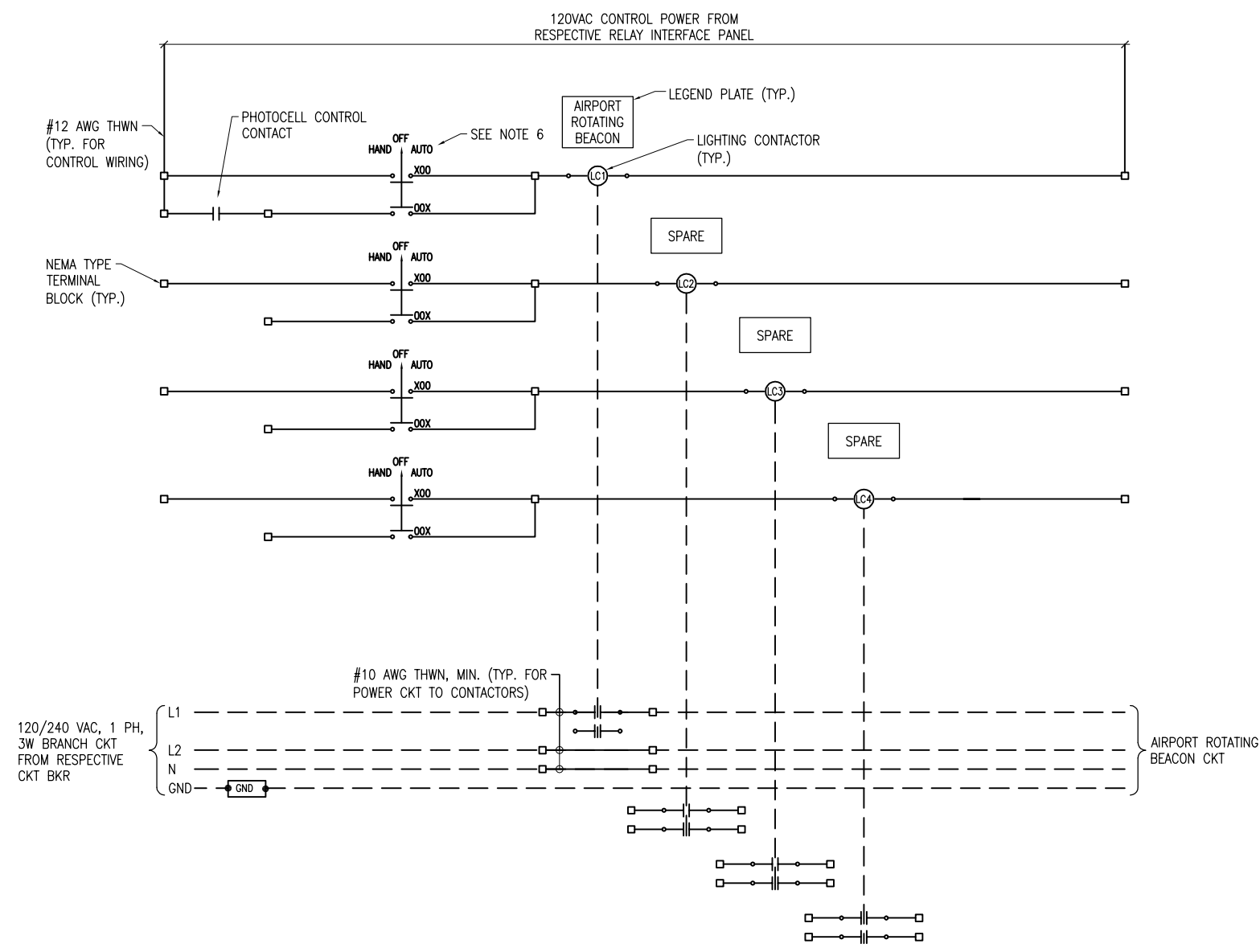
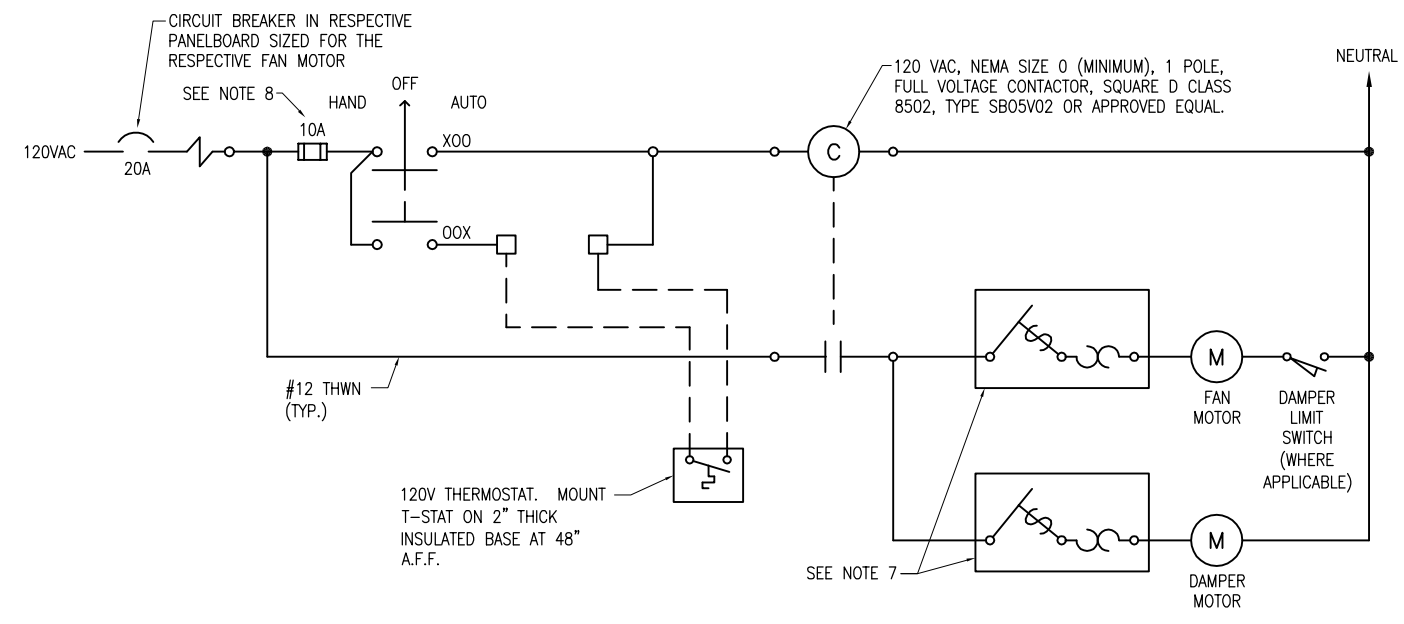


NOTES

- 15 AMP & 20 AMP INPUT POWER/BRANCH CIRCUITS SHALL BE #10 AWG COPPER THWN FROM THE RESPECTIVE POWER SOURCE TO THE LIGHTING CONTACTOR/RELAY PANEL. 25 AMP AND 30 AMP INPUT POWER/BRANCH CIRCUITS SHALL BE #8 AWG COPPER THWN (MIN.) FROM THE RESPECTIVE POWER SOURCE TO THE LIGHTING CONTACTOR/RELAY PANEL.
- INPUT CONTROL CIRCUITS SHALL BE #12 AWG COPPER THWN.
- FOR 120 VAC BRANCH CIRCUITS THE NEUTRAL CONDUCTOR SHALL NOT BE SWITCHED THROUGH THE RELAY CONTACTS. USE TERMINAL BLOCKS TO TRANSITION FROM VAULT BRANCH CIRCUIT WIRING TO FIELD WIRING.
- THE AIRPORT ROTATING BEACON CIRCUIT SHALL HAVE PHASE "A" SWITCHED THROUGH THE LIGHTING CONTACTOR. PHASE "B" SHALL BE UNSWITCHED FROM THE POWER SOURCE TO THE LOAD CENTER AT THE AIRPORT ROTATING BEACON.
- PROVIDE #10 AWG COPPER BONDING JUMPER FROM PANEL ENCLOSURE FRAME TO ENCLOSURE DOOR.
- PROVIDE 3-POSITION MAINTAINED CONTACT "HAND-OFF-AUTO" SELECTOR SWITCH FOR EACH LIGHTING CONTACTOR & MOUNT ON LIGHTING CONTACTOR PANEL ENCLOSURE DOOR. SELECTOR SWITCH SHALL BE SQUARE D CLASS 9001, TYPE KS43FBH13, OR APPROVED EQUAL. INCLUDE LEGEND PLATE TO IDENTIFY THE DEVICE CONTROLLED (EX: "WIND CONE" OR "AIRPORT ROTATING BEACON").
- PROVIDE FRACTIONAL HORSEPOWER MOTOR MANUAL STARTER, SQUARE D MANUAL STARTER WITH HANDLE/GUARD/LOCK OFF, IN NEMA 4 ENCLOSURE CLASS 2510, TYPE FG5 OR APPROVED EQUAL FOR FAN MOTOR & DAMPER MOTOR. INCLUDE MELTING ALLOY TYPE THERMAL OVERLOADS SIZED AS REQUIRED TO PROTECT THE RESPECTIVE MOTOR. 120 VAC MOTORS SHALL HAVE SINGLE POLE STARTERS.
- FUSING FOR CONTROL WIRING SHALL BE 10 AMP, 600 VAC, BUSSMANN CATALOG FNQ-R-10, OR APPROVED EQUAL, WITH FUSE BLOCKS, WITH BOX LUG TERMINALS, SIZED AS REQUIRED FOR THE RESPECTIVE APPLICATION. INCLUDE HARDWARE FOR MOUNTING. PROVIDE ONE BOX (5 MINIMUM QUANTITY) OF EACH TYPE AND SIZE OF FUSE, UPON COMPLETION OF THE JOB FOR USE AS SPARES.



CONTROL PANEL FOR AIRFIELD NAVAIDS SCHEMATIC



EXHAUST FAN CONTROL SCHEMATIC

REVISION	DATE

JOLIET REGIONAL AIRPORT
JOLIET PARK DISTRICT
JOLIET, ILLINOIS

A.I.P. PROJ.: 3-17-0066-B8

IL PROJ.: JOT-4166

Hanson Project No. 09A01770-0001	File Name E-604-SCM.dwg	Scale NONE	Date 02/13/12
LAYOUT	KNL	01/13/12	
DRAWN	MLH	01/28/12	
REVIEWED	KNL/CAH	02/13/12	



© Copyright Hanson Professional Services Inc. 2012
Hanson Professional Services Inc.
1525 S. State St.
Springfield, Illinois 62703-2886

LIGHTING CONTACTOR SCHEMATIC

CONSTRUCT A STAND ALONE ELECTRICAL VAULT. REPLACE RUNWAY LIGHTS AND INSTALL TAXIWAY LIGHTS

MAR 12 2012 2:46 PM KINC00394
pw:\spi-svc06\hanson\dom\hanson_projects\Documents\09\jobs\09A0177\09A01770\CA0\Airport\Sheet\E-604-SCM