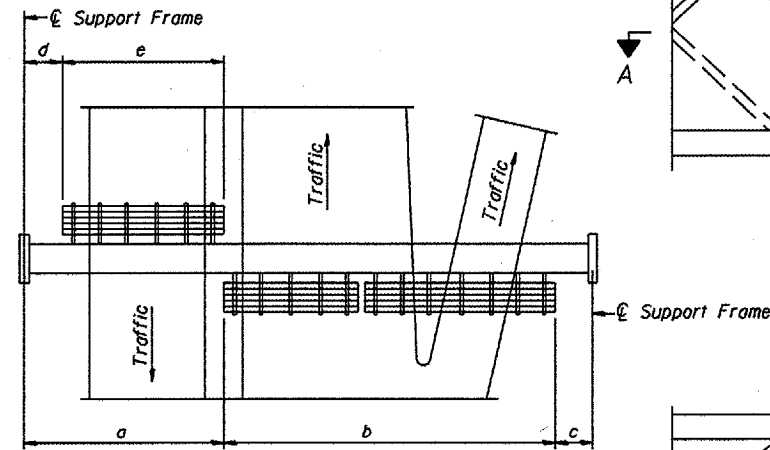
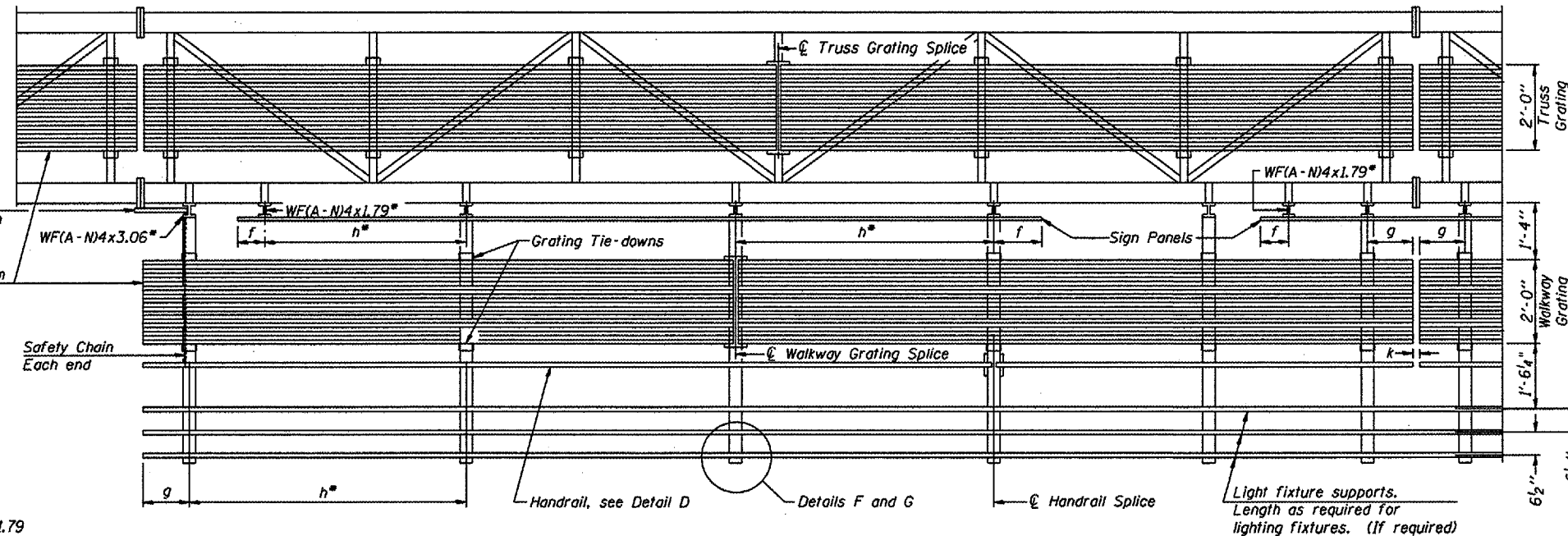


**TYPICAL FRONT ELEVATION**  
With lights and handrail omitted for clarity.  
For Section B-B, see Base Sheet OS-A-10.



**PLAN**  
**WALKWAY AND HANDRAIL SKETCH**  
(Road plan beneath truss varies)



**SECTION A-A**

Handrail and walkway shall span a minimum of three brackets between splices and/or gap joints.  
Place all sign and walkway brackets as close to panel points as practical.  
Grating, handrail and light support splices placed as needed.

Truss grating to facilitate inspection shall run full length (center to center of support frames) ±12" on overhead trusses.  
Cost of truss grating is included in "Overhead Sign Structure".

**BRACKET TABLE**

Sign Width		Number Brackets Required
Greater Than	Less Than or Equal To	
	8'-0"	2
8'-0"	14'-0"	3
14'-0"	20'-0"	4
20'-0"	26'-0"	5
26'-0"	32'-0"	6

**Notes:**

- Space walkway brackets WF(A-N)4x3.06 and sign brackets WF(A-N)4x1.79 for efficiency and within limits shown:

f = 12" maximum, 4" minimum (End of sign to  $\mathcal{C}$  of nearest bracket)  
g = 12" maximum, 4" minimum (End of walkway grating to  $\mathcal{C}$  of nearest support bracket)  
h = 6'-0" maximum ( $\mathcal{C}$  to  $\mathcal{C}$  sign and/or walkway support brackets, WF(A-N)4x1.79 or WF(A-N)4x3.06)  
k = 2" maximum gap between adjacent walkway grating sections and handrail ends

- If walkway bracket at safety chain location is behind sign, add angle to bracket, see Alternate Safety Chain Attachment on Base Sheet OS-A-II.

For Details T and W, Section B-B and Grating Splice Details, see Base Sheet OS-A-10.  
For Details D, F, G and P and Handrail Splice Details, see Base Sheet OS-A-10.

DESIGNED -		20
CHECKED -	EXAMINED	
DRAWN -	PASSED	ENGINEER OF BRIDGE DESIGN
CHECKED -		ENGINEER OF BRIDGES AND STRUCTURES

NUMBER	REVISION	DATE

Structure Number	Station	a	b	c	d	e	Walkway Grating and Handrail Lengths
ISO161290R020.0	16 + 14.25 EB	N/A	N/A	N/A	N/A	N/A	47' - 0"*
ISO161290L014.2	907 + 35 WB	N/A	N/A	N/A	N/A	N/A	63' - 0"*
ISO161290L018.0	169 + 68.75 WB	N/A	N/A	N/A	N/A	N/A	78' - 0"*
ISO161290L020.7	35 + 23.25 WB	N/A	N/A	N/A	N/A	N/A	43' - 0"*
ISO161290L023.0	43 + 00 NB	N/A	N/A	N/A	N/A	N/A	56' - 6"*

\*Lengths shown are for the replacement of existing handrails only. Stainless steel pins, bolts, washers and nuts shall be used.

**OVERHEAD SIGN STRUCTURES  
ALUMINUM WALKWAY DETAILS**

District 1  
Handrail Replacement for  
Vierendeel Sign  
Structure-Span