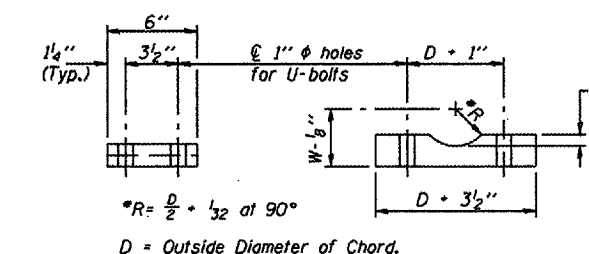
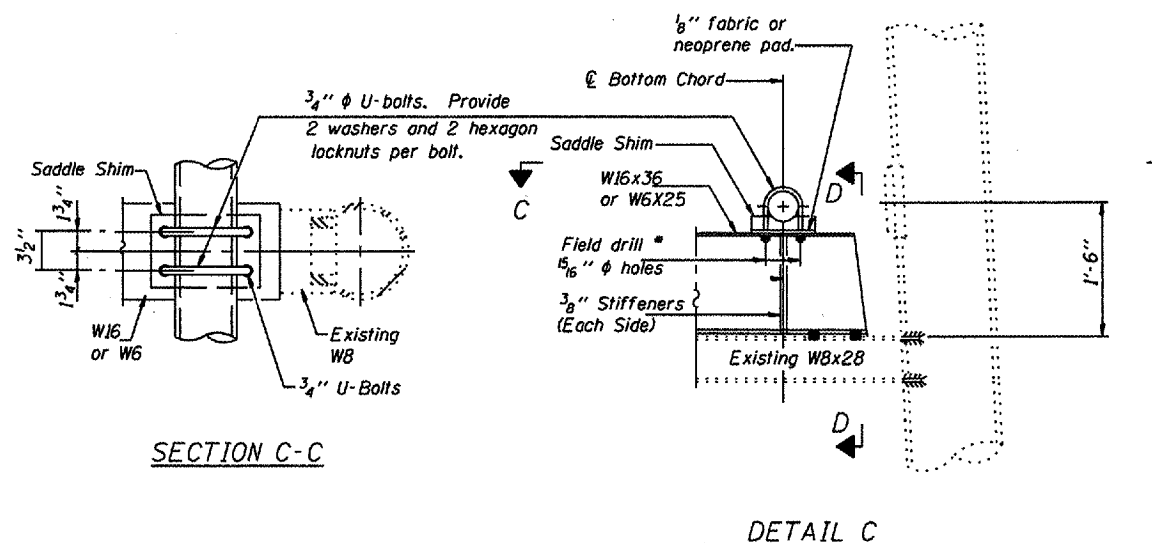


SIDE VIEW

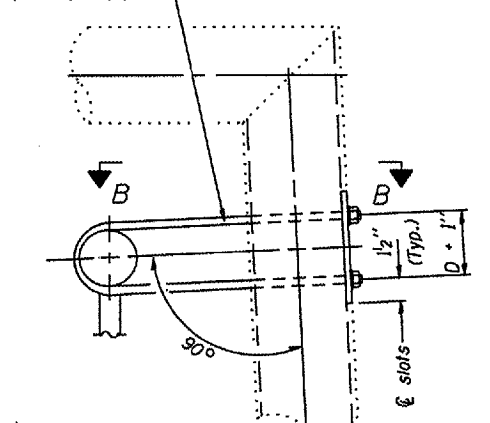
SECTION B-B



SADDLE SHIM DETAIL  
ASTM B26 Alloy 356-F  
or  
ASTM B209 Alloy 6061-T651  
(4 required per sign truss)

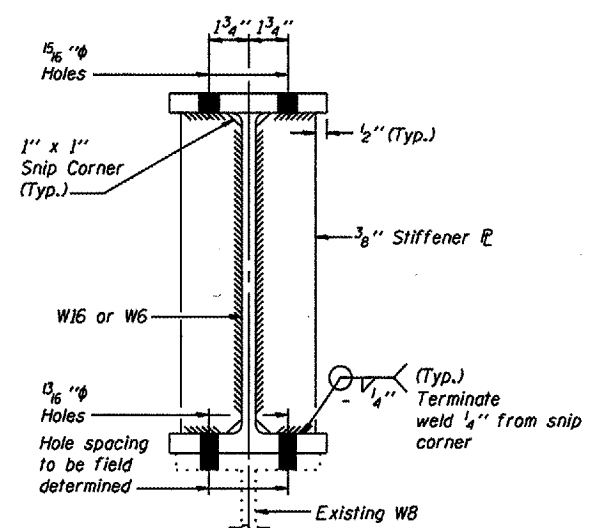
Truss Chord Nominal Dia.	a	W
5 1/2"	13/16"	4 3/4"
6"	7/8"	4 3/4"
6 1/2"	15/16"	4 3/4"
7"	1"	4 3/4"
8 1/2"	1 1/4"	5 1/2"
9"	1 3/8"	5 3/4"

3/4" stainless steel U-bolt. Provide two washers and two hexagon locknuts. Field drill 13/16" holes through pipe, (4 holes required per pipe)



This detail applies to the following overhead sign structures that are being downsized:

- 3S0501039R059.9
- 3S0501039R057.7
- 3S0501039R057.2
- 3S0501039R058.3
- 3S0501039L060.3



SECTION D-D

OVERHEAD SIGN STRUCTURES  
EXISTING SUPPORT FRAME  
RETROFIT for ALUMINUM TRUSS

District 3  
Overhead Sign  
Structure Replacement

DESIGNED	28
CHECKED	EXAMINED
DRAWN	ENGINEER OF STRUCTURAL SERVICES
CHECKED	PASSED
	ENGINEER OF BRIDGES AND STRUCTURES