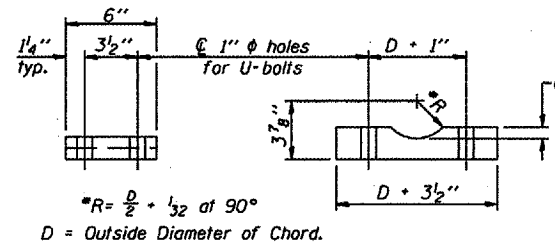


** Alternate detail if welding col. to base plate first, then snip inside corner of ribs. Terminate weld on rib 1/4" from snip.

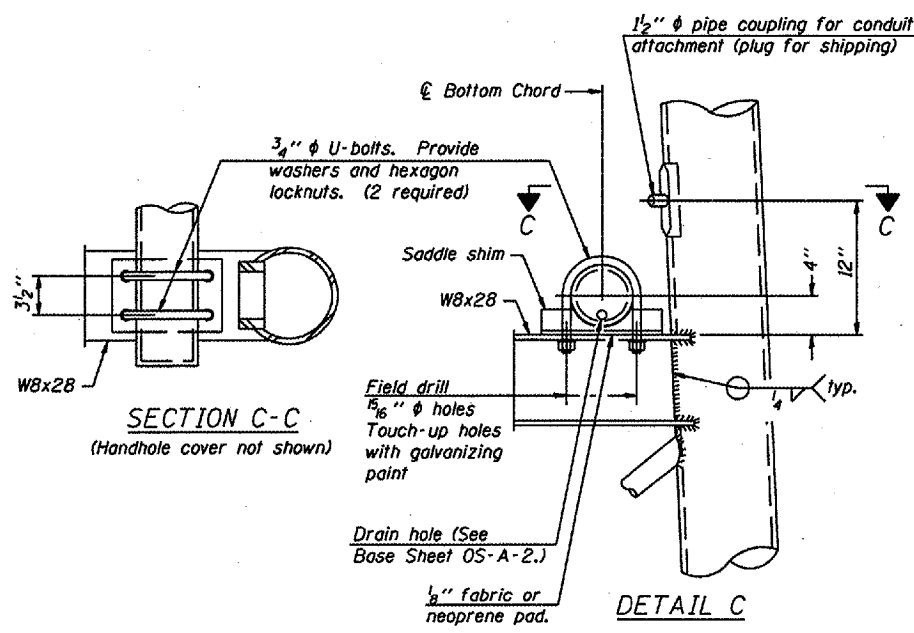
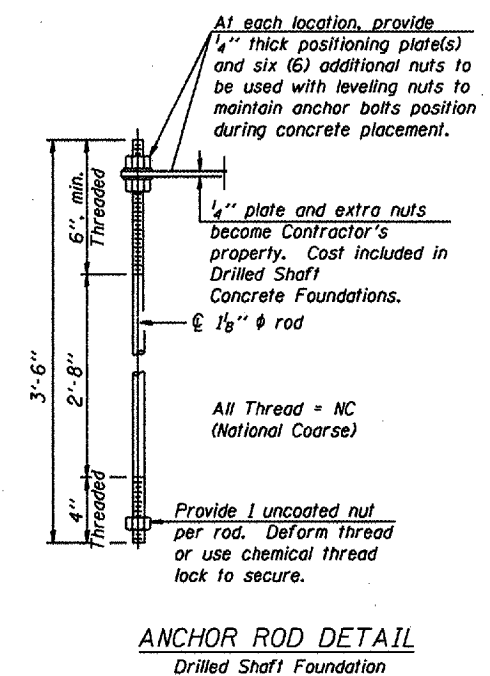
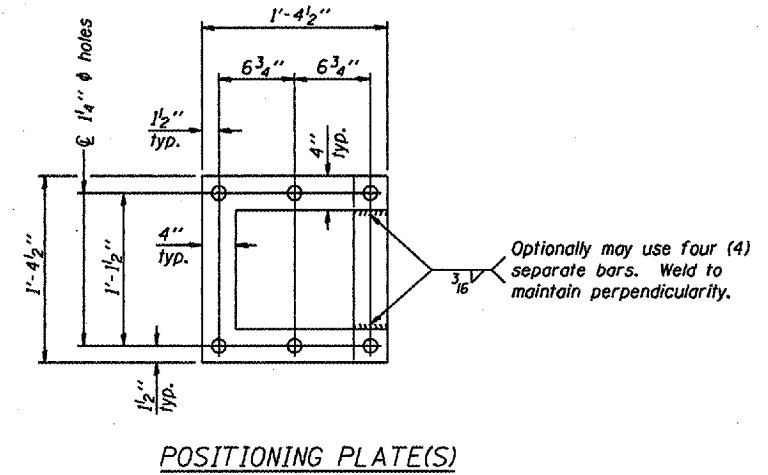
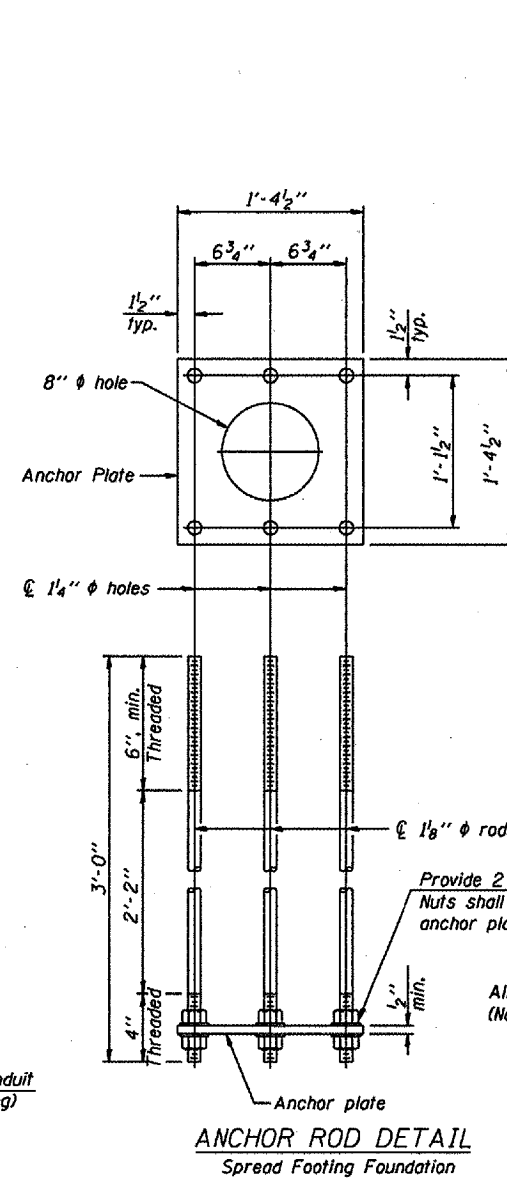
SECTION D-D



SADDLE SHIM DETAIL

ASTM B26 Alloy 356-F
or
ASTM B209 Alloy 6061-T651
(4 required per sign truss)

Truss Chord Nominal Dia.	a
5"	3/4"
5 1/2"	13/16"
6"	7/8"
6 1/2"	15/16"



TYPE I-A TRUSS
8" φ PIPE SUPPORT FRAME DETAILS

Anchor rods shall conform to AASHTO M314 Grade 36 or 55 and meet Charpy V-Notch (CVN) energy of 15 lb.-ft. at 40° F. Galvanize upper 12" per AASHTO M232. No welding shall be permitted on rods.

OVERHEAD SIGN STRUCTURES
SUPPORT FRAME DETAILS ALUMINUM TRUSS

District 5
Overhead Sign Structure
Repair and Replacement

NUMBER	REVISION	DATE

DESIGNED	_____	20
CHECKED	EXAMINED	_____
DRAWN	PASSED	ENGINEER OF BRIDGE DESIGN
CHECKED	_____	ENGINEER OF BRIDGES AND STRUCTURES