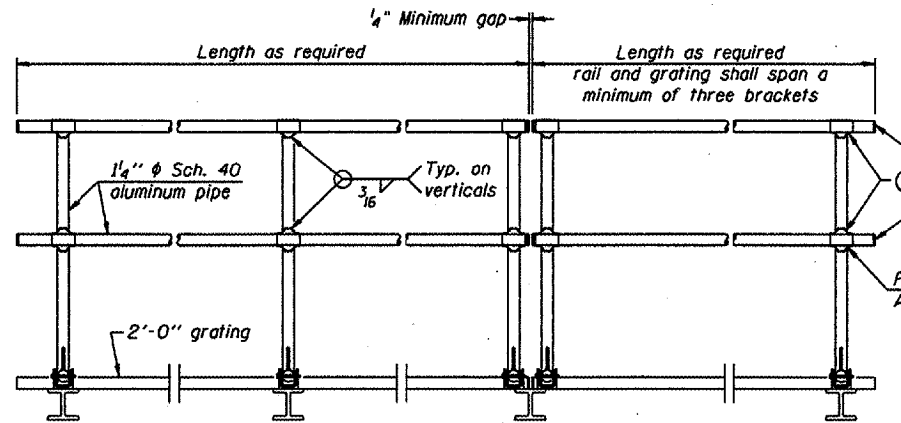


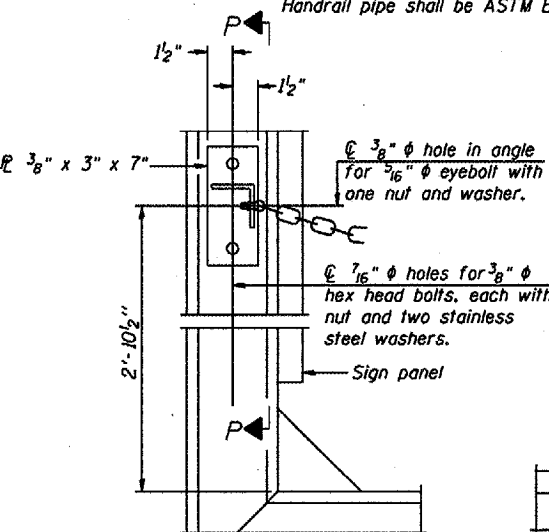
SIDE ELEVATION
(Showing safety chain w/o sign)



FRONT ELEVATION

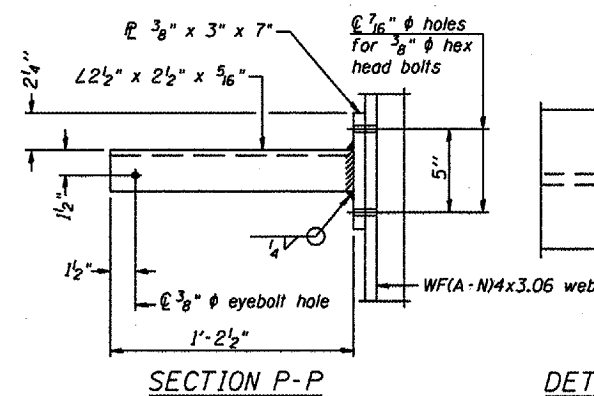
HANDRAIL DETAILS

Handrail pipe shall be ASTM B241, Alloy 6063-T6 or Alloy 6061-T6.

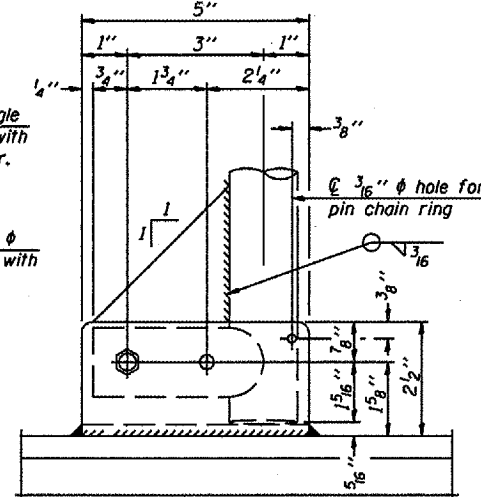


ALTERNATE SAFETY CHAIN ATTACHMENT

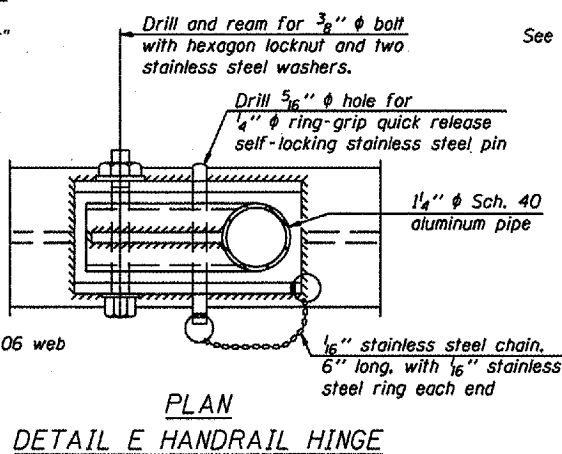
(With Sign Present)
Items not shown same as "Side Elevation" of "Handrail Details"



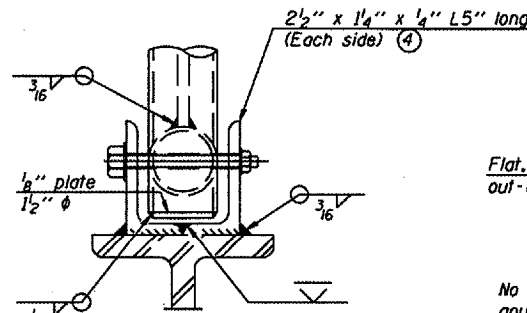
SECTION P-P



SIDE ELEVATION

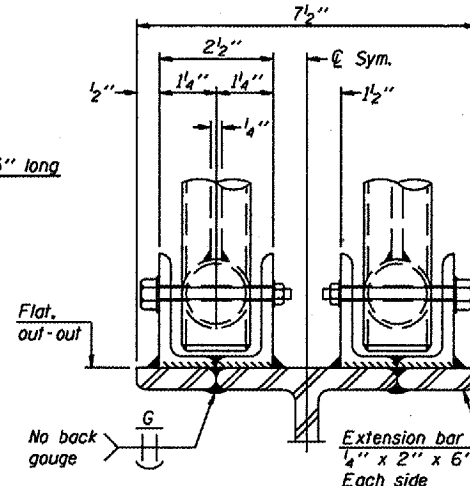


**PLAN
DETAIL E HANDRAIL HINGE**

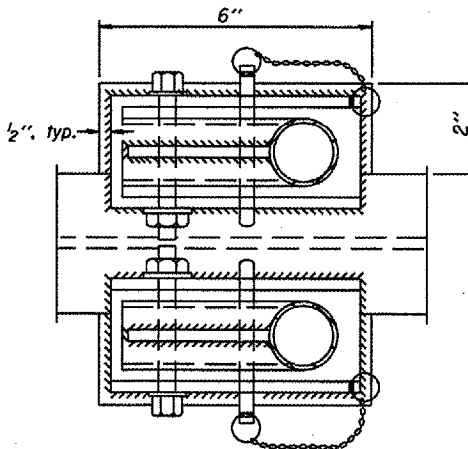


FRONT ELEVATION

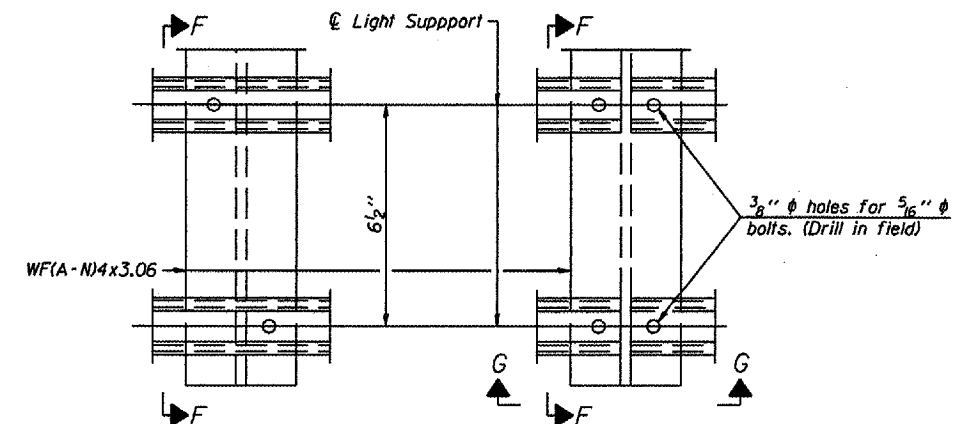
See "Elevation" at right for dimensions.



ELEVATION AT HANDRAIL JOINT

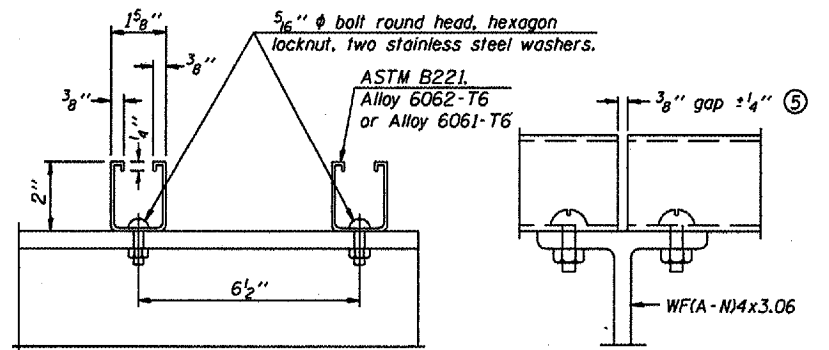


PLAN AT HANDRAIL JOINT
Details not shown same as "PLAN"



DETAIL F

DETAIL G

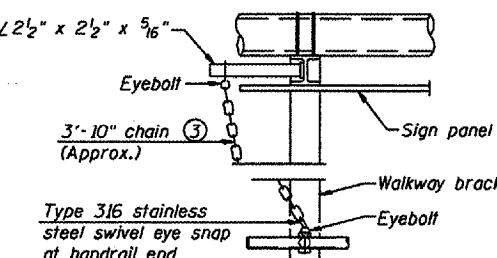


SECTION F-F

SECTION G-G

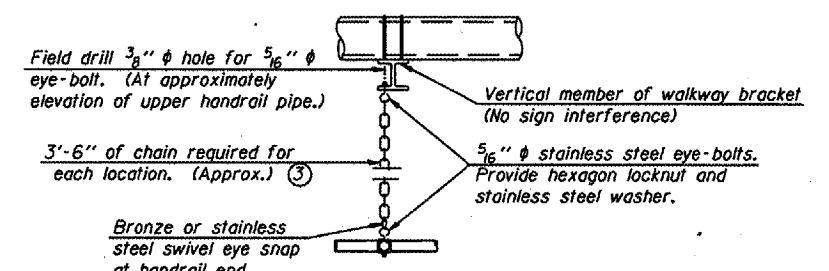
LIGHTING FIXTURE MOUNTS (IF REQUIRED)

⑤ Field cut ends of light support channels shall be free of burrs or hazardous projections and coated with zinc-rich primer or equivalent.



ALTERNATE SAFETY CHAIN ATTACHMENT

Details not shown similar to "Safety Chain" Details (Walkway omitted for clarity)



SAFETY CHAIN

One required for each end of each walkway.

DESIGNED	
CHECKED	
DRAWN	
CHECKED	

EXAMINED	20
PASSED	ENGINEER OF BRIDGE DESIGN
	ENGINEER OF BRIDGES AND STRUCTURES

NUMBER	REVISION	DATE

- ③ 3/16" Type 304L or 316L stainless steel chain, approximately 12 links per foot.
- ④ Extrusions may be used in lieu of the details shown, with approval of the Engineer.

**OVERHEAD SIGN STRUCTURES
ALUMINUM HANDRAIL DETAILS**

District 5
Overhead Sign Structure
Repair and Replacement