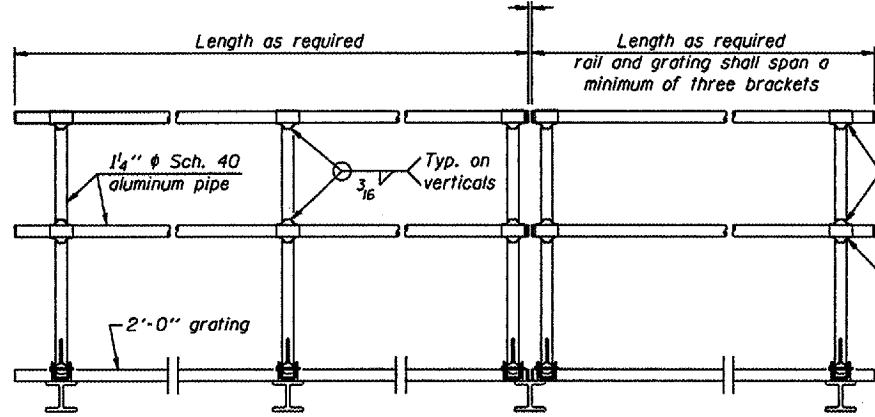


**SIDE ELEVATION**  
(Showing Safety Chain W/O Sign)

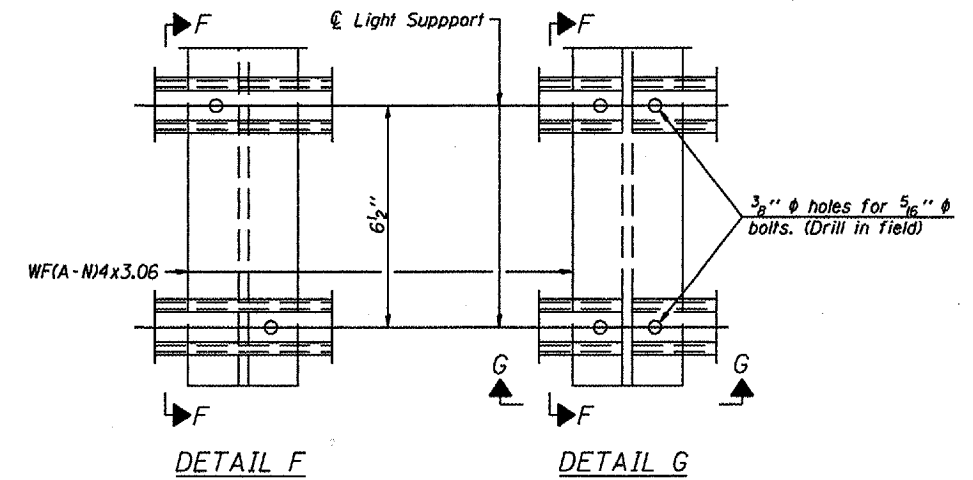


**FRONT ELEVATION**

**HANDRAIL DETAILS**

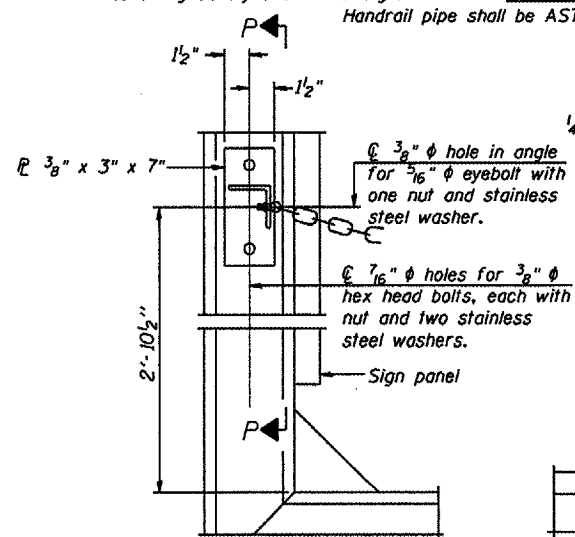
Handrail pipe shall be ASTM B241, Alloy 6063-T6 or Alloy 6061-T6.

- ① Install standard force-fit end caps or weld 1/8" end plates with 1/8" c.f.w. and grind smooth. (All rail ends)
- ② Horizontal handrail member shall be continuous thru fitting. Provide 1/16" hole in fitting for 3/8" bolt. Field drill 1/16" hole in horizontal rail member. Provide locknut and two stainless steel washers for bolt. (Use 5/16" eyebolts in 7/16" holes on top rail at ends only.)



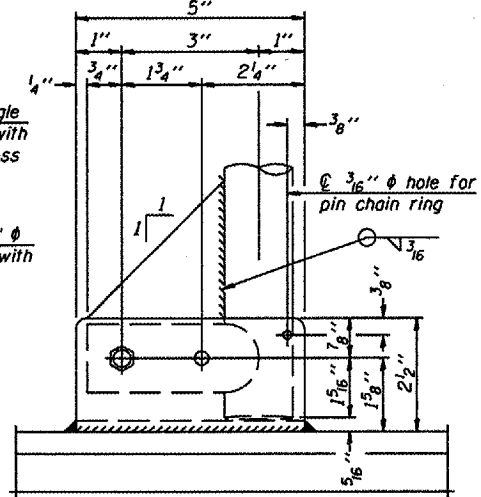
**DETAIL F**

**DETAIL G**

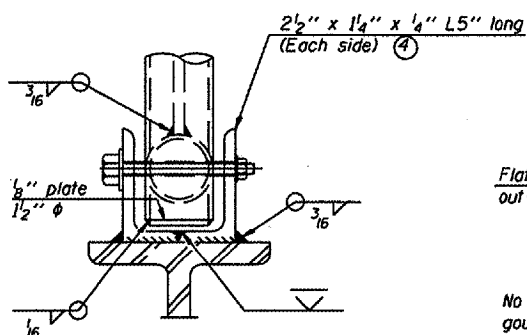


**ALTERNATE SAFETY CHAIN ATTACHMENT**  
(With Sign Present)

Items not shown same as "Side Elevation" of "Handrail Details"

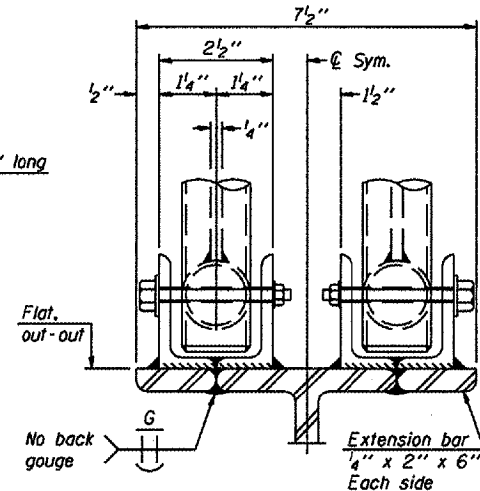


**SIDE ELEVATION**



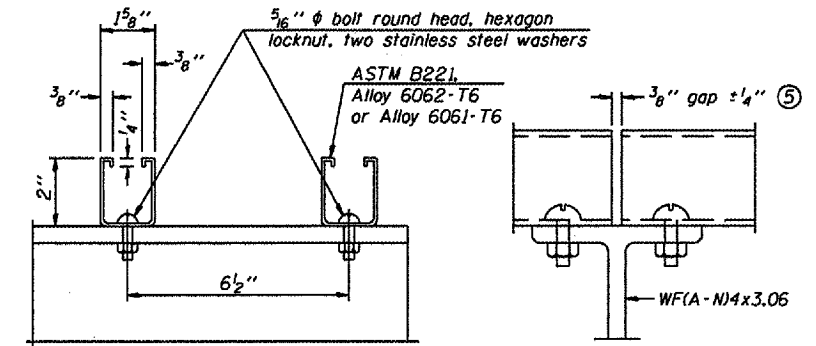
**FRONT ELEVATION**

Details not shown same as "ELEVATION" at right.



**ELEVATION AT HANDRAIL JOINT** ④

Details not shown same as "FRONT ELEVATION"

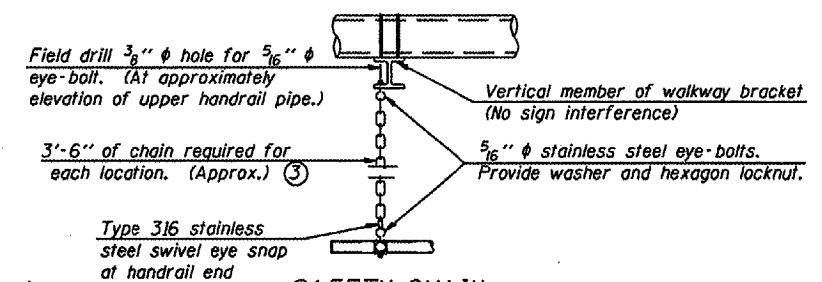


**SECTION F-F**

**SECTION G-G**

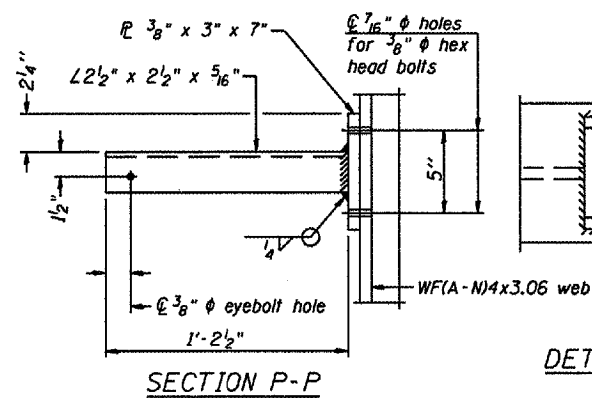
**LIGHTING FIXTURE MOUNTS (IF REQUIRED)**

- ⑤ Field cut ends of light support channels shall be free of burrs or hazardous projections and coated with zinc-rich primer or equivalent.

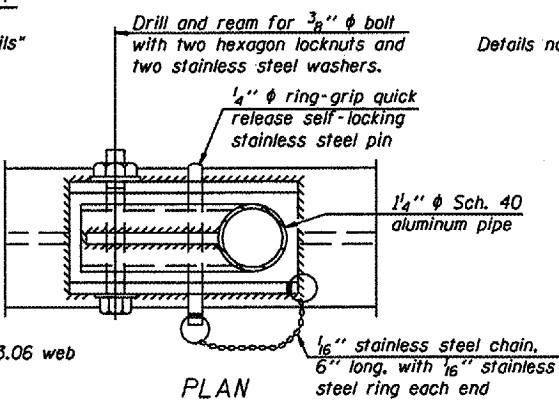


**SAFETY CHAIN**

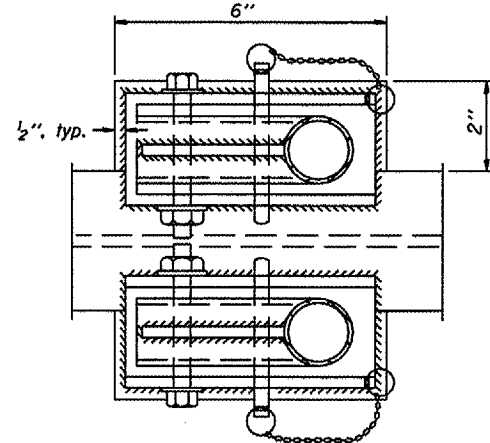
One required for each end of each walkway.



**SECTION P-P**

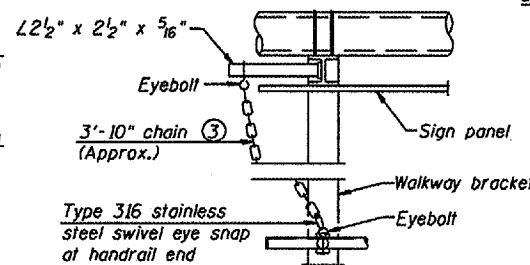


**DETAIL E HANDRAIL HINGE**



**PLAN AT HANDRAIL JOINT**

Details not shown same as "PLAN"



**ALTERNATE SAFETY CHAIN ATTACHMENT**

Details not shown similar to "Safety Chain" Details (Walkway omitted for clarity)

- ③ 3/16" Type 304L or 316L Stainless Steel, approximately 12 links per foot.
- ④ Extrusions may be used in lieu of the details shown, with approval of the Engineer.

DESIGNED -		20
CHECKED -	EXAMINED	
DRAWN -	PASSED	ENGINEER OF BRIDGE DESIGN
CHECKED -		ENGINEER OF BRIDGES AND STRUCTURES

OSC-A-8

1-7-05

NUMBER	REVISION	DATE

**CANTILEVER SIGN STRUCTURES  
HANDRAIL DETAILS  
ALUMINUM TRUSS & STEEL POST**

District 7  
Overhead Sign Structure  
Repair and Replacement