

F.A.I. RTE.	SECTION	COUNTY	TOTAL SHEETS	SHEET NO.
57	*	COOK	916	578
STA.	TO STA.			
FED. ROAD DIST. NO.	ILLINOIS	FED. AID PROJECT		
CONTRACT NO. 62304				
*(1516.1, 1717, & 1818) R-4				

BENCHMARK

Square cut on the east end of curb of the northeast corner of first alley north of 99th street approximately 35 feet east of LaSalle street. Elev. 16.35 feet.

EXISTING STRUCTURE TO BE REMOVED

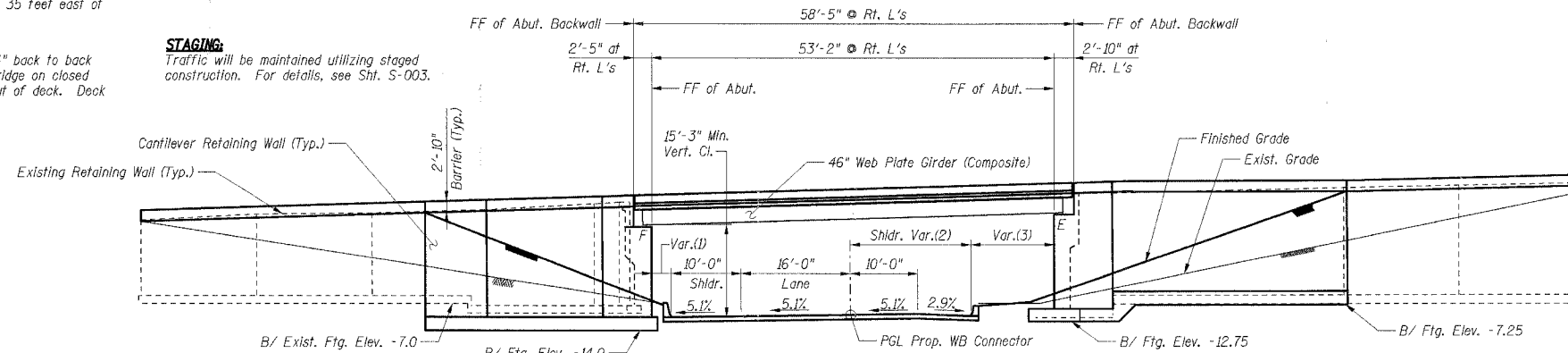
Structure No. 016-0072 Single span, 117'-4" back to back of abutments, composite steel plate girder bridge on closed abutments. The structure is 37'-0" out to out of deck. Deck constructed on stay-in-place metal forms.

SALVAGE:

None.

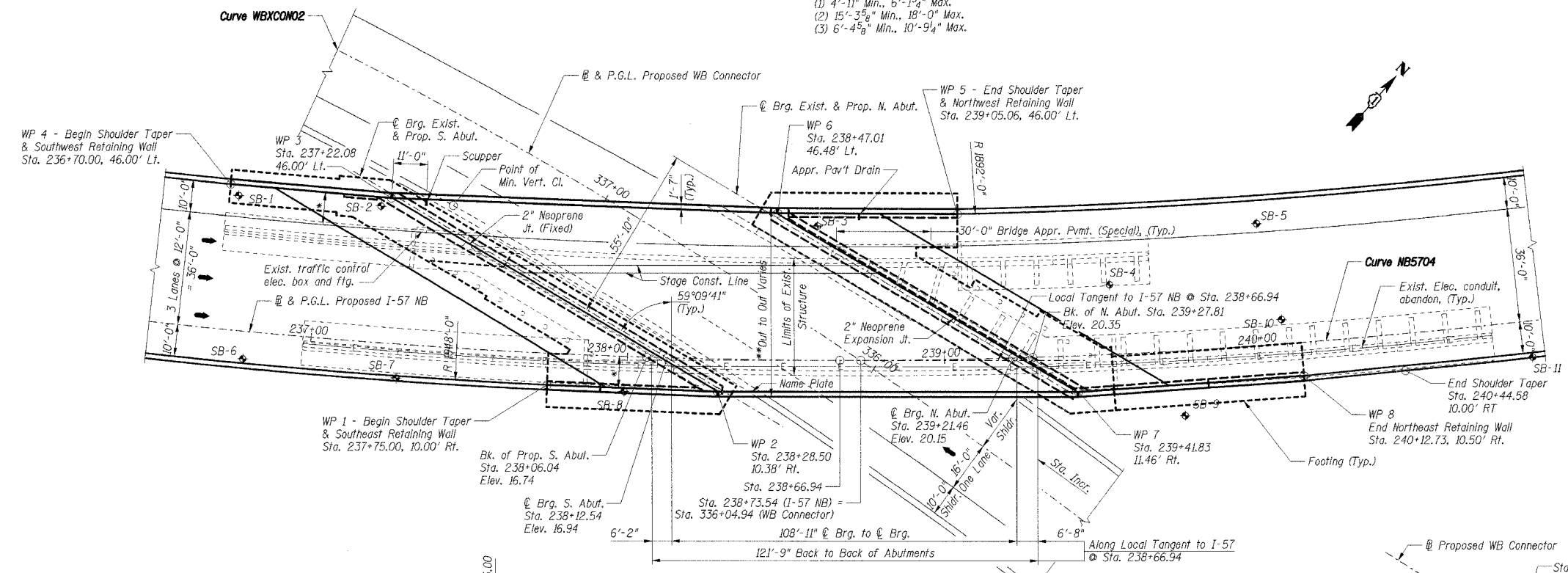
STAGING:

Traffic will be maintained utilizing staged construction. For details, see Sht. S-003.



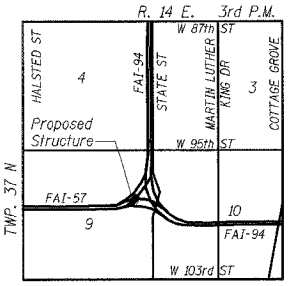
ELEVATION

- (1) 4'-11" Min., 6'-1 3/4" Max.
- (2) 15'-3 5/8" Min., 18'-0" Max.
- (3) 6'-4 9/8" Min., 10'-9 1/4" Max.

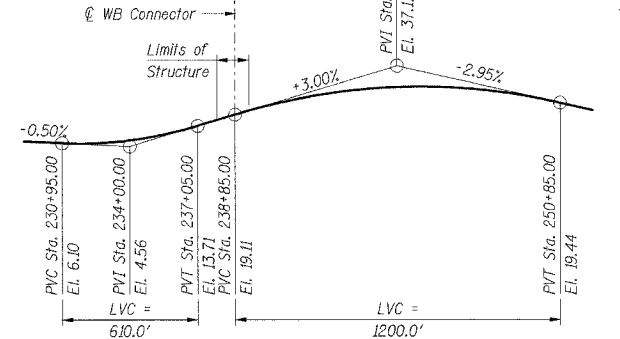


PLAN

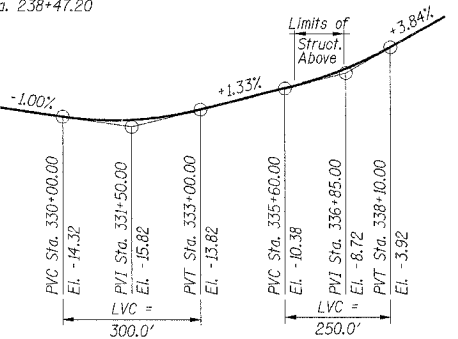
* Shoulder width varies
 ** 60'-5 3/4" @ Sta. 238+28.46
 59'-9 1/8" @ Sta. 238+47.20



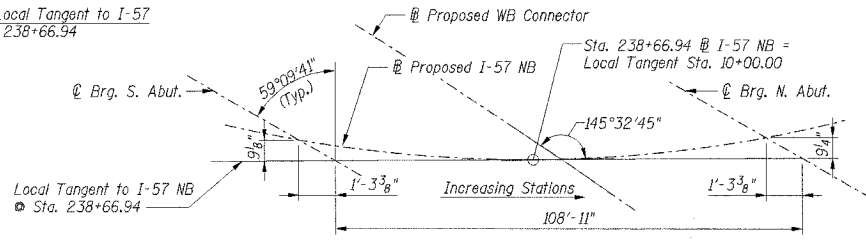
LOCATION MAP



**PROFILE GRADE
PROPOSED I-57 NB**



**PROFILE GRADE
PROPOSED WB CONNECTOR**



OFFSET SKETCH

LEGEND & ABBREVIATIONS

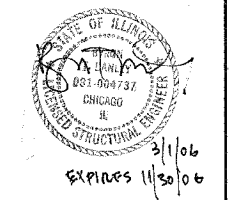
- SB-0 Soil Boring Location
- WP denotes Work Point at toe of parapet or barrier wall.
- FF denotes front face.
- For Temporary Soil Retention System, see Sheets S-006 - S-009.

SHT. S-001

REVISIONS	
NAME	DATE

- Notes:**
- Dimensions for WB Connector are perpendicular to @ WB Connector.
 - Elevation view developed perpendicular to the southeast fascia girder.
 - For underpass lighting, see electrical plans.
 - For Temporary Soil Retention System, see Sheets S-006 to S-009.
 - Retaining walls and bridge parapets are straight segments between work points.

Prop. Curve WBXCON2	Prop. Curve NB5704
PI Sta. 337+82.29	PI Sta. 235+20.23
Δ = 19° 30' 40" (LT)	Δ = 56° 09' 47" (LT)
D = 3° 40' 23"	D = 2° 57' 23"
T = 268.19'	T = 1,033.99'
R = 1,559.85'	R = 1,938.00'
L = 531.18'	L = 1,899.69'
E = 22.89'	E = 258.59'
PC Sta. 335+14.10	PC Sta. 224+86.23
PT Sta. 340+45.28	PT Sta. 243+85.92
SE = 5.1%	SE = 5.5%



APPROVED
FOR STRUCTURAL ADEQUACY ONLY

ENGINEER OF BRIDGES AND STRUCTURES

ILLINOIS DEPARTMENT OF TRANSPORTATION
 F.A.I. ROUTE 57 (INTERSTATE 57)
 I-57 NB OVER WB CONNECTOR
 SN 016-0072 OLD, SN 016-2852 NEW
 STA. 238+73.54
 COOK COUNTY, SECTION (1516.1, 1717, & 1818) R-4
 GENERAL PLAN AND ELEVATION

DATE: 03/07/06

DRAWN BY: VV
 CHECKED BY: RDS

TENG
 TENG & ASSOCIATES, INC.
 ENGINEERS ARCHITECTS PLANNERS
 205 N. MICHIGAN AVE., CHICAGO, IL 60601
 TELEPHONE: 312.443.0000