

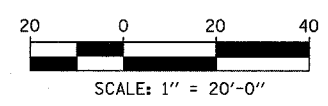
LEGEND:

	PAVEMENT REMOVAL		PAVEMENT (SHOULDER) REMOVAL (SPECIAL) (OVER EXISTING UTILITIES)		TREE REMOVAL (UNITS) (NO UNIT SHOWN = <6)
	PAVED SHOULDER REMOVAL		COMB CONC CURB & GUTTER REMOVAL		SOIL BORING LOCATIONS
	BITUMINOUS SURFACE REMOVAL, 4"		CHAIN LINK FENCE REMOVAL		LIGHT POLE FOUNDATION REMOVAL (SEE ROADWAY LIGHTING & SURVEILLANCE PLANS)
	BITUMINOUS SURFACE REMOVAL, 1 1/2"		CONCRETE BARRIER/GUARDRAIL REMOVAL		
	BITUMINOUS SURFACE REMOVAL, 1 3/4"				

PLAN NOTES:

- ALL STATION/OFFSET/RADIUS CALLOUTS MEASURED TO EDGE OF PAVEMENT UNLESS OTHERWISE NOTED.
- EXACT LOCATIONS OF EXISTING PIERS/ABUTMENTS TO BE FIELD VERIFIED

TYLIN INTERNATIONAL



REVISIONS	
NAME	DATE

ILLINOIS DEPARTMENT OF TRANSPORTATION
 F.A.I. 94 (DAN RYAN EXPRESSWAY)
 EXISTING AND PROPOSED PLAN
 SB I-57
 SB I-57 STA. 99+00.00 TO 105+00.00

SCALE: 1"=20'
 DATE: MARCH 1, 2006

DRAWN BY: MPG
 CHECKED BY: RTM

