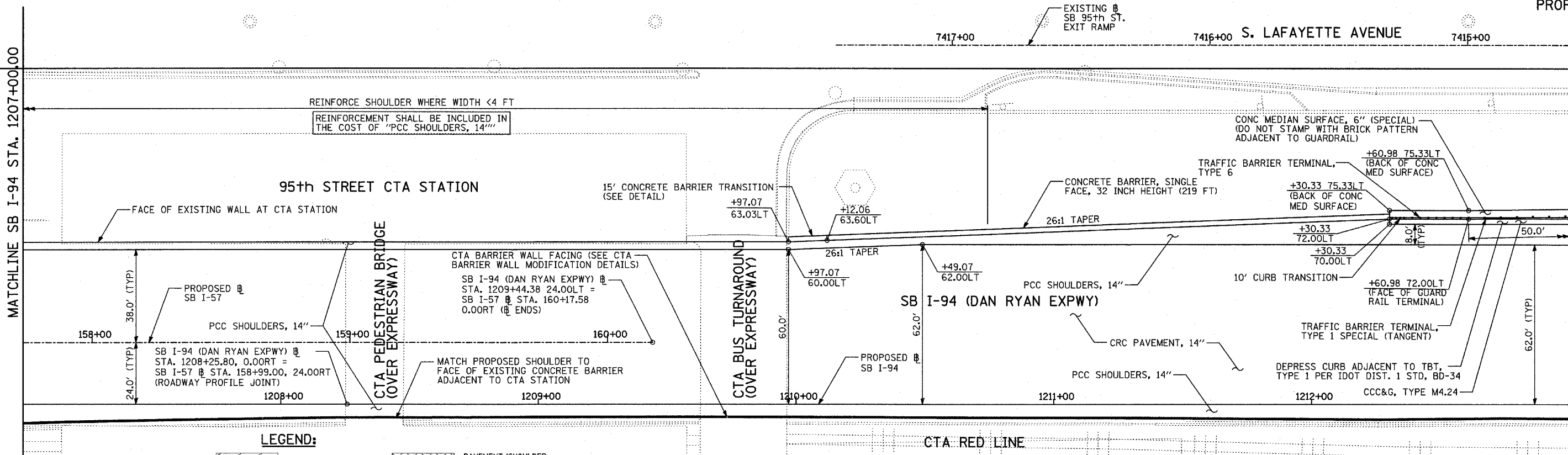
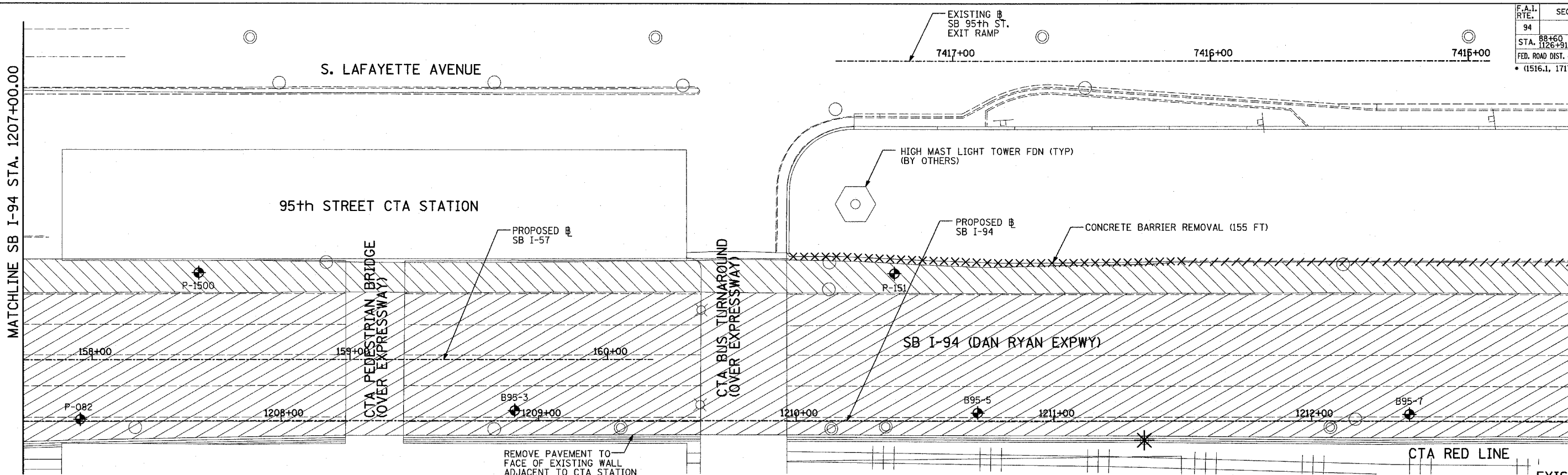
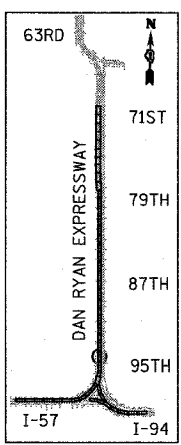


F.A.I. RTE.	SECTION	COUNTY	TOTAL SHEETS	SHEET NO.
94		COOK	764	78
STA. 88+60 (SB I-57) TO STA. 1313+00 (SB RYAN)				
FED. ROAD DIST. NO. ILLINOIS FED. AID PROJECT				
(1516.1, 1717, & 1818) R-5 62593				



EXISTING CONDITIONS
PROPOSED IMPROVEMENTS

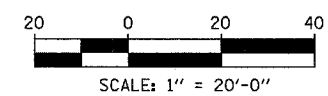


LOCATION MAP

LEGEND:

- | | | | | | |
|--|------------------------------------|--|---|--|---|
| | PAVEMENT REMOVAL | | PAVEMENT/SHOULDER REMOVAL (SPECIAL) (OVER EXISTING UTILITIES) | | TREE REMOVAL (UNITS) (NO UNIT SHOWN = <6) |
| | PAVED SHOULDER REMOVAL | | COMB CONC CURB & GUTTER REMOVAL | | MAINLINE & STATION/OFFSET |
| | BITUMINOUS SURFACE REMOVAL, 4" | | CHAIN LINK FENCE REMOVAL | | PLAN NOTES: |
| | BITUMINOUS SURFACE REMOVAL, 1 1/2" | | CONCRETE BARRIER/GUARDRAIL REMOVAL | | - ALL STATION/OFFSET/RADIUS CALLOUTS MEASURED TO EDGE OF PAVEMENT UNLESS OTHERWISE NOTED. |
| | BITUMINOUS SURFACE REMOVAL, 1 3/4" | | SOIL BORING LOCATIONS | | - EXACT LOCATIONS OF EXISTING PIERS/ABUTMENTS TO BE FIELD VERIFIED |
| | | | LIGHT POLE FOUNDATION REMOVAL (SEE ROADWAY LIGHTING & SURVEILLANCE PLANS) | | |

TYLIN INTERNATIONAL



REVISIONS	
NAME	DATE

ILLINOIS DEPARTMENT OF TRANSPORTATION
F.A.I. 94 (DAN RYAN EXPRESSWAY)
EXISTING AND PROPOSED PLAN
SB I-94 (DAN RYAN EXPRESSWAY)
SB I-94 STA. 1207+00.00 TO 1213+00.00

SCALE: 1"=20'
DATE: MARCH 1, 2006

DRAWN BY: MPG
CHECKED BY: RTM