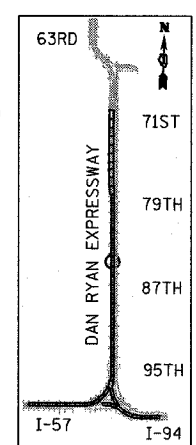
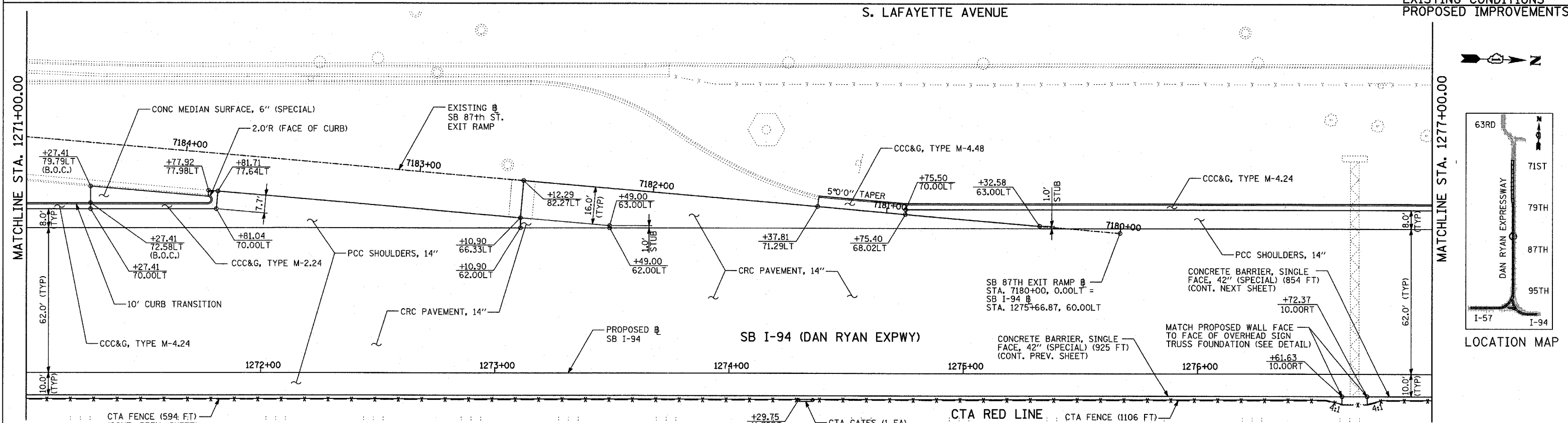
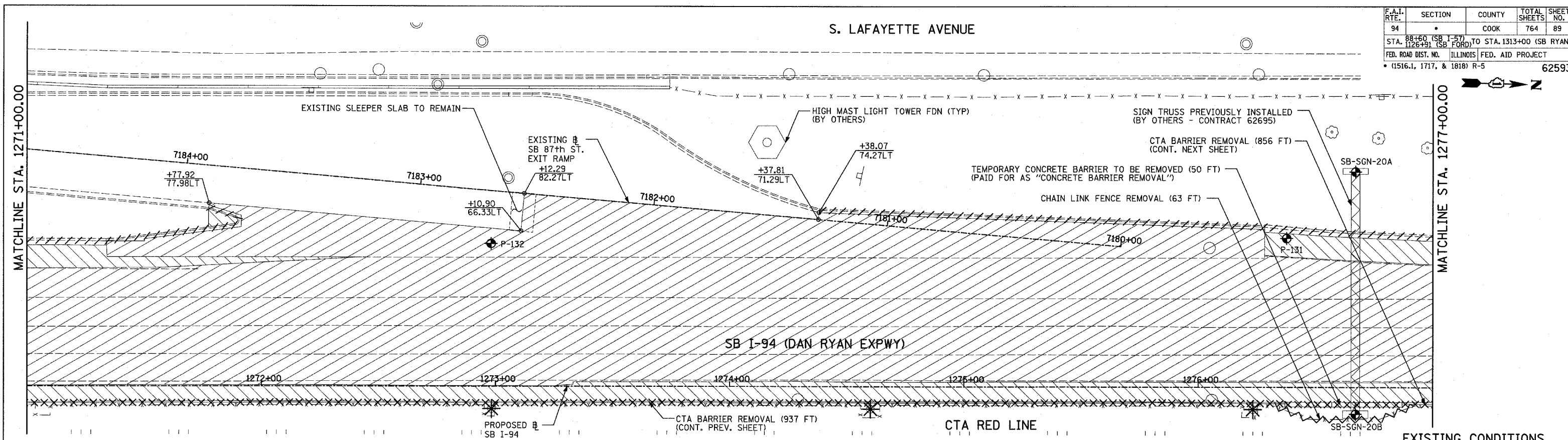


| | | | | |
|--|---------|--------|--------------|-----------|
| F.A.I. RTE. | SECTION | COUNTY | TOTAL SHEETS | SHEET NO. |
| 94 | | COOK | 764 | 89 |
| STA. 88+60 (SB I-57) TO STA. 1313+00 (SB RYAN) | | | | |
| FED. ROAD DIST. NO. ILLINOIS FED. AID PROJECT | | | | |
| (1516.1, 1717, & 1818) R-5 62593 | | | | |

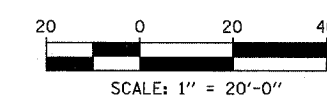


LEGEND:

| | | | | | |
|--|------------------------------------|--|---|--|---|
| | PAVEMENT REMOVAL | | BITUMINOUS SURFACE REMOVAL, 1 3/4" | | SOIL BORING LOCATIONS |
| | PAVED SHOULDER REMOVAL | | PAVEMENT/SHOULDER REMOVAL (SPECIAL) (OVER EXISTING UTILITIES) | | LIGHT POLE FOUNDATION REMOVAL (SEE ROADWAY LIGHTING & SURVEILLANCE PLANS) |
| | BITUMINOUS SURFACE REMOVAL, 4" | | COMB CONC CURB & GUTTER REMOVAL | | TREE REMOVAL (UNITS) (NO UNIT SHOWN = <6) |
| | BITUMINOUS SURFACE REMOVAL, 1 1/2" | | CHAIN LINK FENCE REMOVAL | | MAINLINE # STATION/OFFSET |
| | | | CONCRETE BARRIER/GUARDRAIL REMOVAL | | |

PLAN NOTES:

- ALL STATION/OFFSET/RADIUS CALLOUTS MEASURED TO EDGE OF PAVEMENT UNLESS OTHERWISE NOTED.
- EXACT LOCATIONS OF EXISTING PIERS/ABUTMENTS TO BE FIELD VERIFIED



| REVISIONS | |
|-----------|------|
| NAME | DATE |
| | |
| | |
| | |
| | |
| | |

ILLINOIS DEPARTMENT OF TRANSPORTATION
 F.A.I. 94 (DAN RYAN EXPRESSWAY)
 EXISTING AND PROPOSED PLAN
 SB I-94 (DAN RYAN EXPRESSWAY)
 SB I-94 STA. 1271+00.00 TO 1277+00.00

SCALE: 1"=20'
 DATE: MARCH 1, 2006

DRAWN BY: MPG
 CHECKED BY: RTM

TYLIN INTERNATIONAL