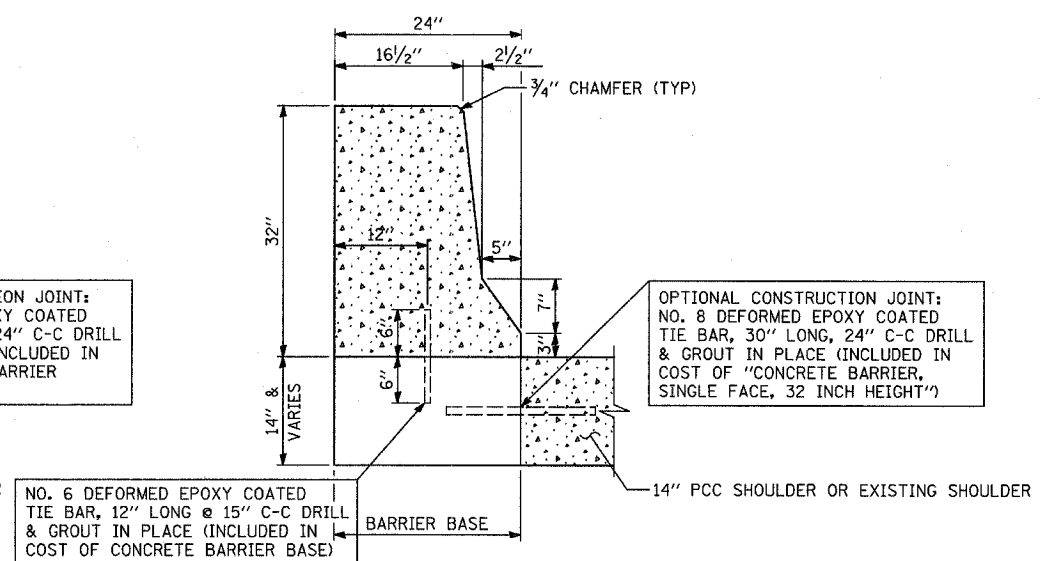
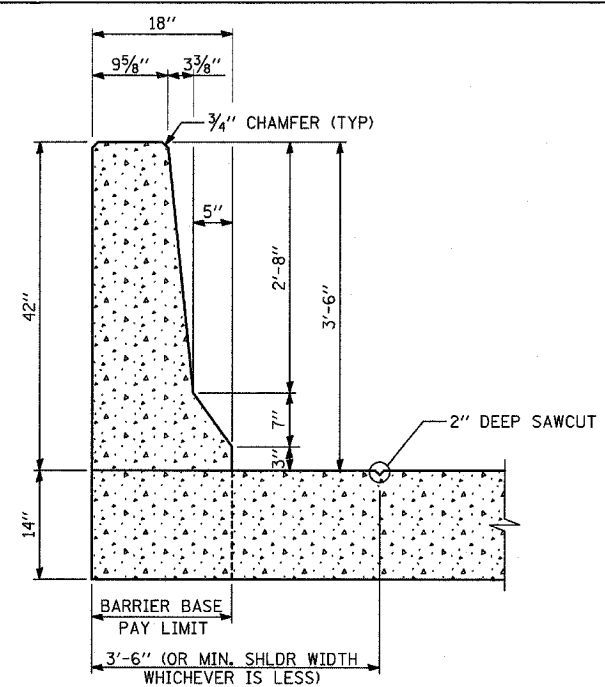


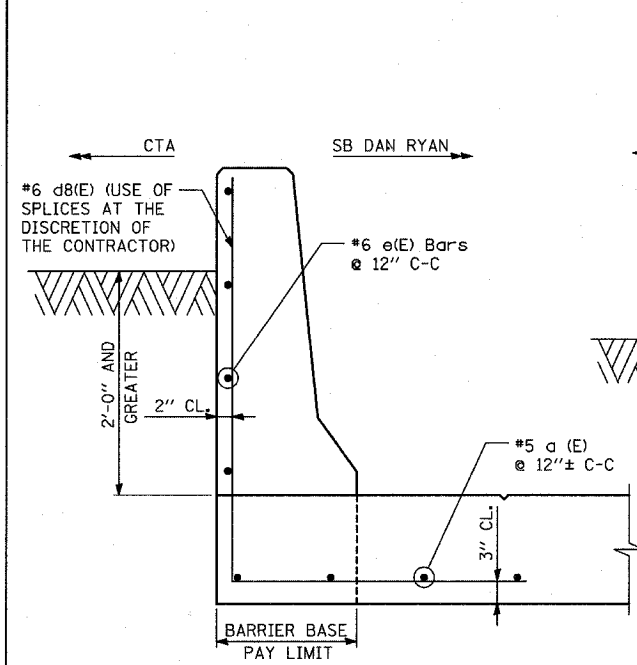
SECTION A-A
15' CONCRETE BARRIER TRANSITION
 CONCRETE BARRIER, SINGLE FACE, 32 INCH HEIGHT



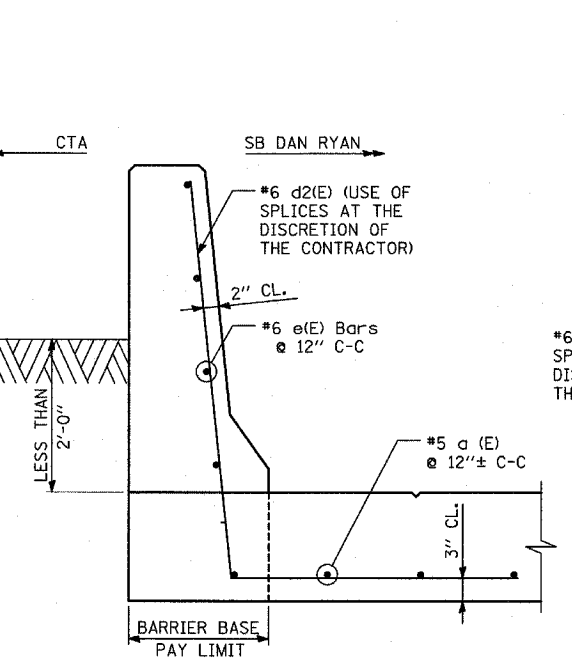
SECTION B-B
CONCRETE BARRIER, SINGLE FACE, 32 INCH HEIGHT
 & CONCRETE BARRIER BASE



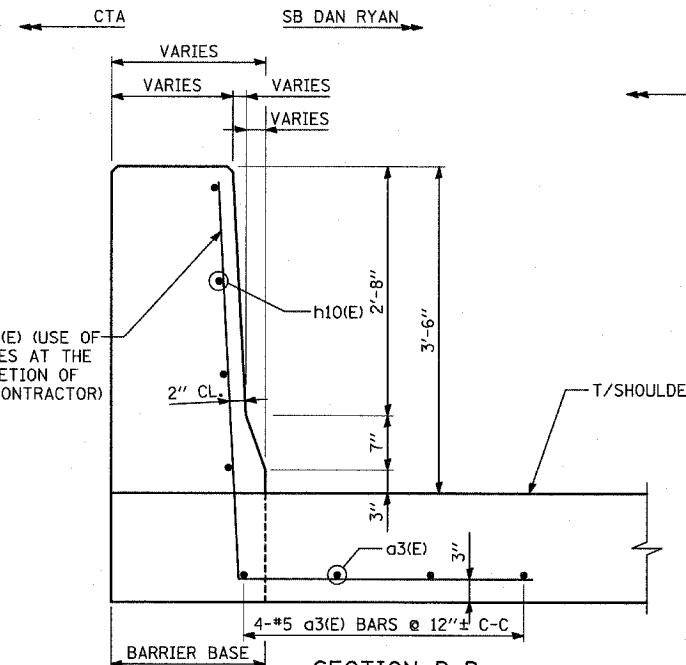
SECTION E-E
CONCRETE BARRIER, SINGLE FACE, 42 INCH HEIGHT
 (SPECIAL) DIMENSIONS
 SEE BELOW FOR REINFORCEMENT OPTIONS



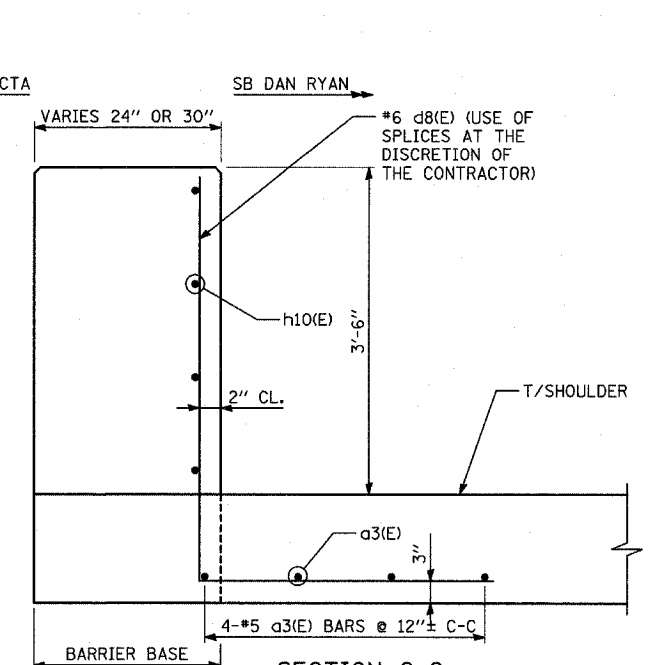
REINFORCEMENT #1
 RETAINED HEIGHT GREATER THAN 2'-0"
SECTION E-E: CONCRETE BARRIER, SINGLE FACE, 42 INCH HEIGHT (SPECIAL)



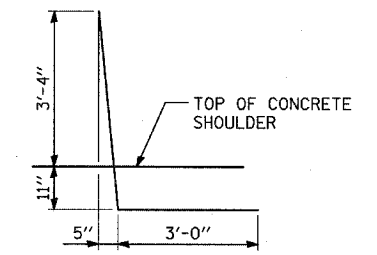
REINFORCEMENT #2
 RETAINED HEIGHT LESS THAN 2'-0"



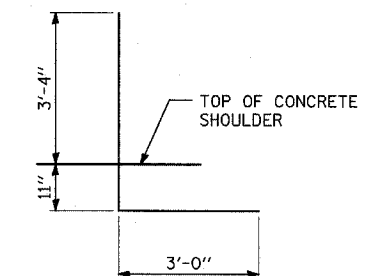
SECTION D-D
15' CONCRETE BARRIER TRANSITION
 CONCRETE BARRIER, SINGLE FACE, 42 INCH HEIGHT (SPECIAL)



SECTION C-C
15' CONCRETE BARRIER TRANSITION
 CONCRETE BARRIER, SINGLE FACE, 42 INCH HEIGHT (SPECIAL)

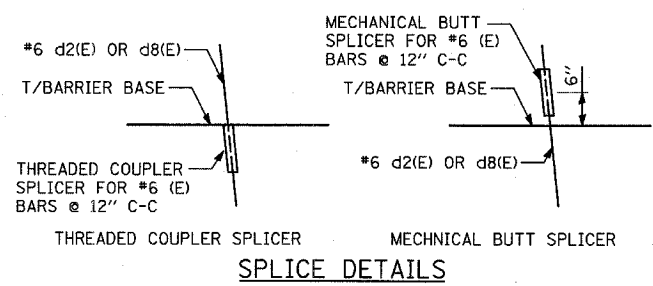


d2(E) BAR



d8(E) BAR

- NOTES:**
1. BAR SPLICERS SHALL BE CAPABLE OF DEVELOPING A MINIMUM OF 125% OF THE YIELD STRENGTH OF A #6 BAR.
 2. ALL REINFORCING BARS, BAR SPLICERS, TIE BARS AND DOWEL BARS SHALL BE SEATED IN THE FINAL POSITION PRIOR TO THE CONCRETE OPERATIONS. BARS CANNOT BE MUCKED INTO PLACE.
 3. MAINTAIN SLOPE OF FACE AS SHOWN ON DETAILS.
 4. ALL REINFORCING BARS, BAR SPLICERS, TIE BARS AND DOWEL BARS SHALL BE INCLUDED IN THE COST OF "CONCRETE BARRIER, SINGLE FACE" OF THE TYPE SPECIFIED



SPlice DETAILS

TYLIN INTERNATIONAL

REVISIONS	
NAME	DATE

ILLINOIS DEPARTMENT OF TRANSPORTATION
 F.A.I. 94 (DAN RYAN EXPRESSWAY)
 MISCELLANEOUS DETAILS
 CONCRETE BARRIER TRANSITION
 TYPICAL SECTIONS

SCALE: NONE
 DATE: MARCH 1, 2006
 DRAWN BY: MPG
 CHECKED BY: TGB