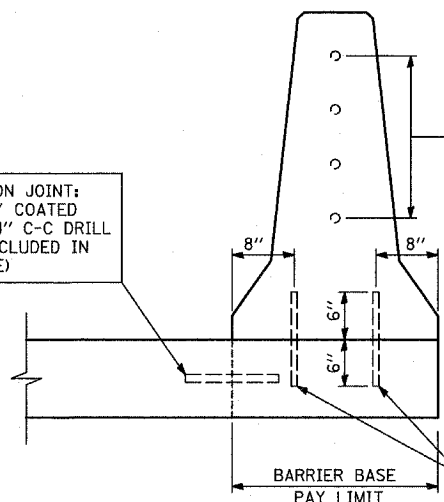


**DIMENSIONS**

ALL DIMENSIONS ARE APPROXIMATE BASED ON EXISTING PLANS AND MAY VARY - MATCH EXISTING BARRIER

**CONCRETE BARRIER, DOUBLE FACE, 42 INCH HEIGHT**  
ALONG SB I-57

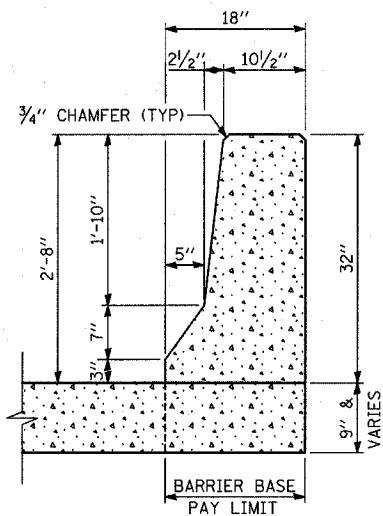
OPTIONAL CONSTRUCTION JOINT:  
NO. 8 DEFORMED EPOXY COATED TIE BAR, 30" LONG, 24" C-C DRILL & GROUT IN PLACE (INCLUDED IN COST OF BARRIER BASE)



**REINFORCEMENT**

NO. 4 DEFORMED EPOXY COATED REBAR @ 7" C-C DRILL & GROUT IN PLACE - EMBED 12" INTO ADJACENT EXISTING BARRIER - (INCLUDED IN COST OF CONCRETE BARRIER, DOUBLE FACE, 42 INCH HEIGHT)

NO. 6 DEFORMED EPOXY COATED TIE BAR, 12" LONG @ 15" STAGGERED C-C DRILL & GROUT IN PLACE - (INCLUDED IN COST OF BARRIER BASE)

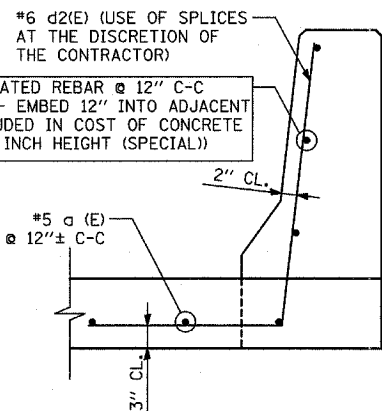


**DIMENSIONS**

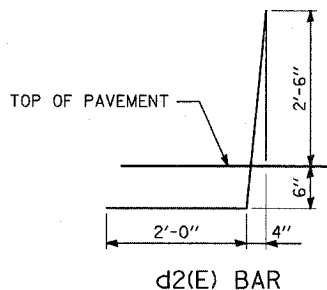
ALL DIMENSIONS ARE APPROXIMATE BASED ON EXISTING PLANS AND MAY VARY - MATCH EXISTING BARRIER

**CONCRETE BARRIER, SINGLE FACE, 32 INCH HEIGHT (SPECIAL)**  
ALONG SB I-94 (BISHOP FORD FREEWAY) AND EB I-57 TO I-94 CONNECTOR

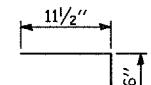
NO. 6 DEFORMED EPOXY COATED REBAR @ 12" C-C DRILL & GROUT IN PLACE - EMBED 12" INTO ADJACENT EXISTING BARRIER - (INCLUDED IN COST OF CONCRETE BARRIER, SINGLE FACE, 32 INCH HEIGHT (SPECIAL))



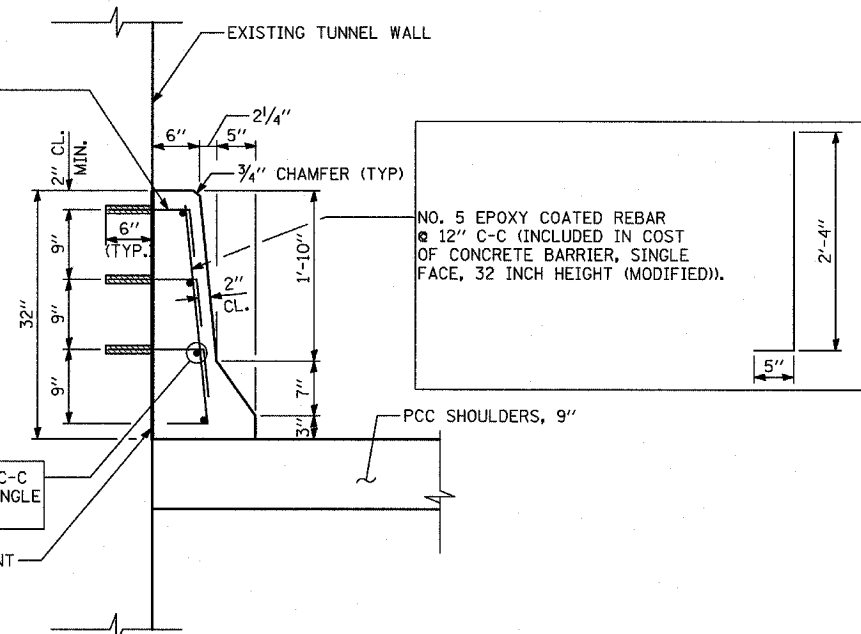
**REINFORCEMENT**



NO. 6 DEFORMED EPOXY COATED REBAR @ 9" C-C DRILL & GROUT IN PLACE - EMBED 6" INTO ADJACENT EXISTING STRUCTURE - (INCLUDED IN COST OF CONCRETE BARRIER, SINGLE FACE, 32 INCH HEIGHT (MODIFIED)). CUT BAR TO FIT.



NO. 5 DEFORMED EPOXY COATED REBAR @ 9" C-C (INCLUDED IN COST OF CONCRETE BARRIER, SINGLE FACE, 32 INCH HEIGHT (MODIFIED)).



**CONCRETE BARRIER, SINGLE FACE, 32 INCH HEIGHT (MODIFIED)**  
SCALE: 1"=1'-0"

PROVIDE JOINTS IN FACING TO MATCH THOSE IN THE EXISTING STRUCTURES. (INCLUDED IN COST OF CONCRETE BARRIER, SINGLE FACE, 32 INCH HEIGHT (MODIFIED)).

REVISIONS	
NAME	DATE