

MATERIALS REQUIRED FOR (1) ONE LUG SYSTEM COMPLETE, 26'
(Excluding CRC Concrete, Pavement Reinforcement, Stabilized Sub-base and Sub-base Granular Material)

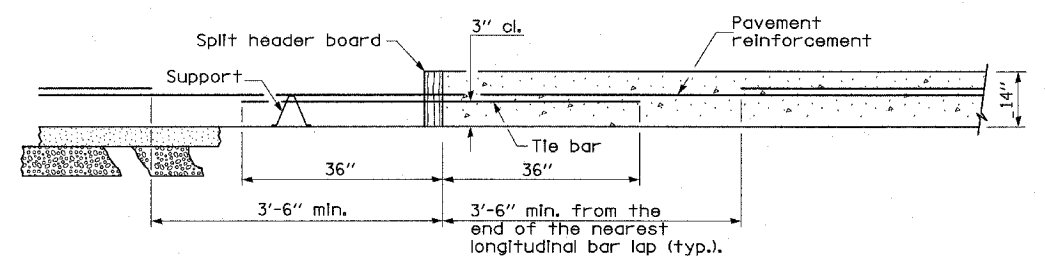
Bar No.	Size	Length	Shape
a	144 No. 8	16'-8"	U
b	24 No. 5	27'-0"	U
c	144 No. 5	20'-0"	U
d	28 No. 4	11'-9" or 13'-9"	U

Concrete (cu. yds.) 29.85
Reinforcing Bars (lbs.) 10330
Concrete Pad (sq. yds.) 139

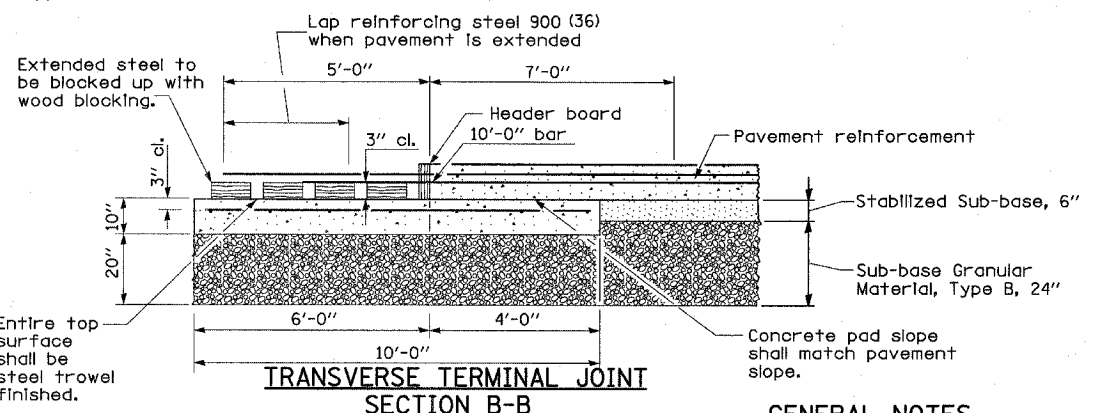
MATERIALS REQUIRED FOR (1) ONE LUG SYSTEM COMPLETE, 36'
(Excluding CRC Concrete, Pavement Reinforcement, Stabilized Sub-base and Sub-base Granular Material)

Bar No.	Size	Length	Shape
a	198 No. 8	16'-8"	U
b	24 No. 5	37'-0"	U
c	198 No. 5	20'-0"	U
d	42 No. 4	11'-9"	U

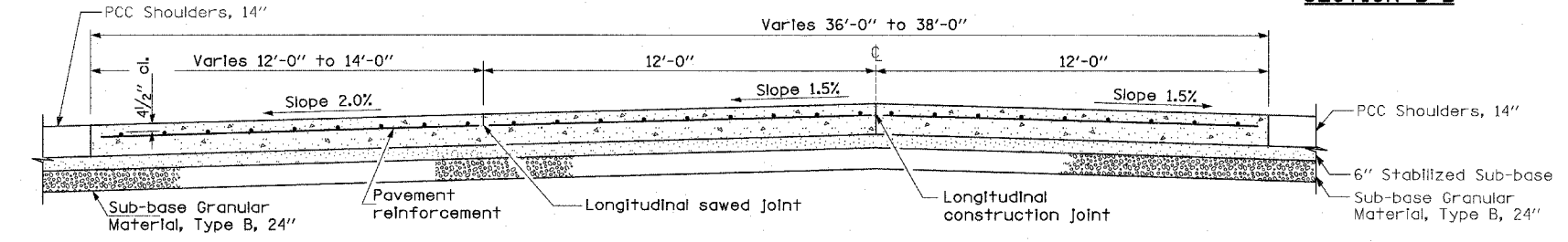
Concrete (cu. yds.) 41.33
Reinforcing Bars (lbs.) 14200
Concrete Pad (sq. yds.) 192



TRANSVERSE CONSTRUCTION JOINT



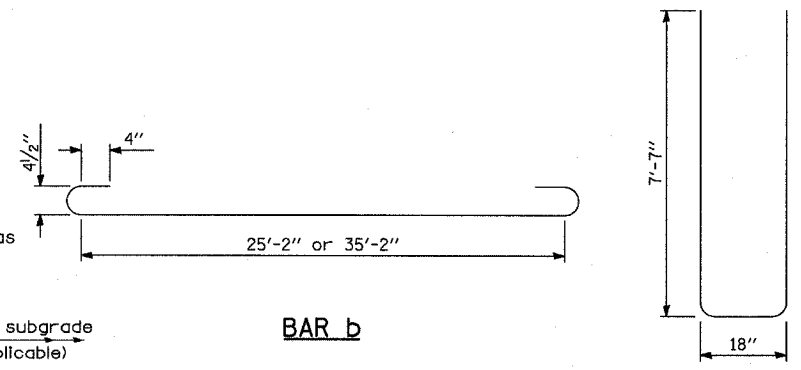
TRANSVERSE TERMINAL JOINT SECTION B-B



SECTION A-A (TYPICAL 3-LANE, 1-WAY WITH SHOULDERS)

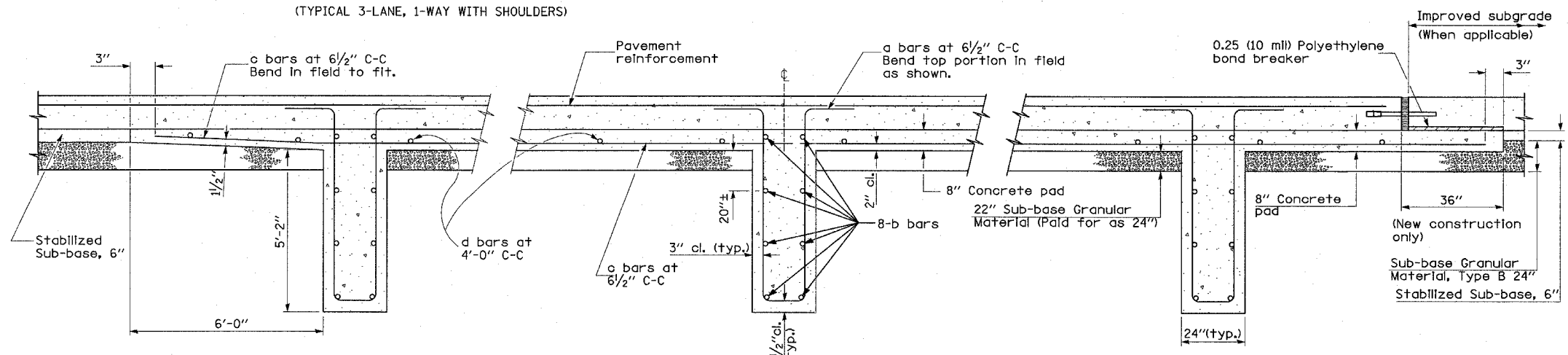
GENERAL NOTES

See Pavement Reinforcement details for additional information.
See Standards 420001 and 420401 for joint details not shown.
All dimensions are in inches unless otherwise shown.
Sub-base granular material that varies in thickness below the lug-system or the transverse terminal joint will be paid for as "Sub-base Granular Material, Type B, 24"



BAR b

BAR a



SECTION AT LUG W

SECTION AT LUG X

SECTION AT LUG Y

TYLIN INTERNATIONAL

REVISIONS	
NAME	DATE

ILLINOIS DEPARTMENT OF TRANSPORTATION
F.A.I. 94 (DAN RYAN EXPRESSWAY)
MISCELLANEOUS DETAILS
CONTINUOUSLY REINFORCED PORTLAND CEMENT CONCRETE PAVEMENT AND LUG SYSTEM COMPLETE, 26' & 36'
SCALE: NONE
DATE: MARCH 1, 2006
DRAWN BY: MPG
CHECKED BY: TGB