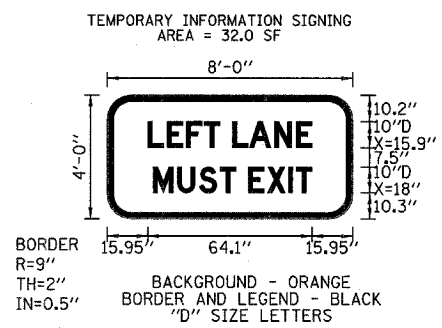
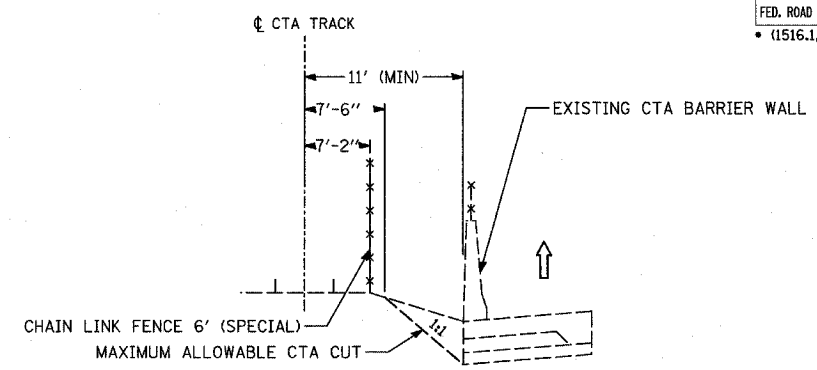


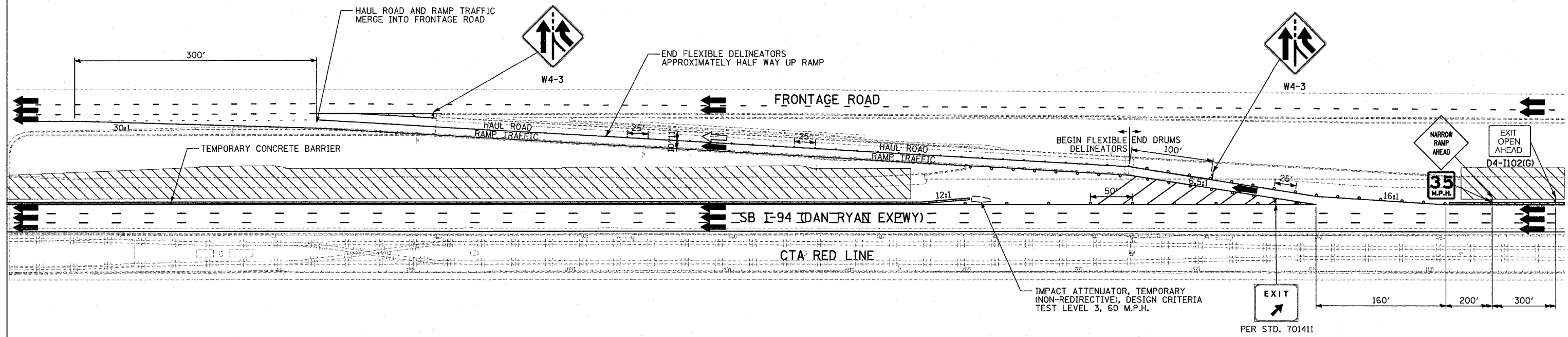
"RIGHT LANE MUST EXIT" SIGN DETAIL



"LEFT LANE MUST EXIT" SIGN DETAIL



LOCATION OF CHAIN LINK FENCE 6' (SPECIAL)



**SUGGESTED MAINTENANCE OF TRAFFIC STAGE 1 WORK ZONE EGRESS DETAIL**

(AT HALSTED ST., WENTWORTH AVE., & 95TH ST. RAMPS)

- LEGEND:**
- TEMPORARY CONCRETE BARRIER
  - TRAFFIC LANE
  - CONSTRUCTION TRAFFIC
  - WORK ZONE
  - DRUM WITH MONO-DIRECTIONAL STEADY BURNING LIGHT
  - DELINEATORS

- NOTES:**
1. ALL CONSTRUCTION VEHICLES MUST STAY WITHIN THE HAUL ROAD. CROSSING EXIT RAMP TRAFFIC IS PROHIBITED.
  2. THE CONTRACTOR SHALL BE RESPONSIBLE TO DIFFERENTIATE BETWEEN THE RAMP EXIT AND HAUL ROAD ENTRANCE.
  3. THE CONTRACTOR SHALL UTILIZE EITHER THE A.I.S. OR C-D ROADWAY TO MERGE HAUL ROAD AND RAMP TRAFFIC AT ALL OTHER EXIT RAMP LOCATIONS. A STOP SIGN SHALL BE PLACED AT THE UPSTREAM END OF THE C-D ROADWAY TO STOP TRAFFIC ON THE RAMP FROM THE FRONTAGE ROAD.
  4. ALL SIGNING FROM DISTRICT 1 DETAIL TC-18 SHALL BE APPLIED TO THE ABOVE DETAIL AND ANY OTHER WORK ZONE ACCESS OPTIONS WHICH MAY BE USED BY THE CONTRACTOR.
  5. SEE FOLLOWING SHEET FOR TYPICAL CROSS-SECTIONS AT EACH LOCATION.

REVISIONS	
NAME	DATE

ILLINOIS DEPARTMENT OF TRANSPORTATION  
F.A.I. 94 (DAN RYAN EXPRESSWAY)  
GENERAL NOTES  
CONSTRUCTION STAGING NOTES  
MAINTENANCE OF TRAFFIC DETAILS  
SHEET 10 OF 12

SCALE: NO SCALE  
DATE: MARCH 1, 2006

DRAWN BY: RTM  
CHECKED BY: TGB