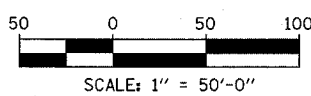
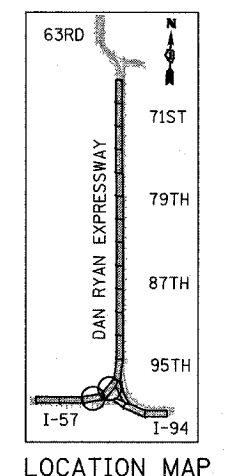
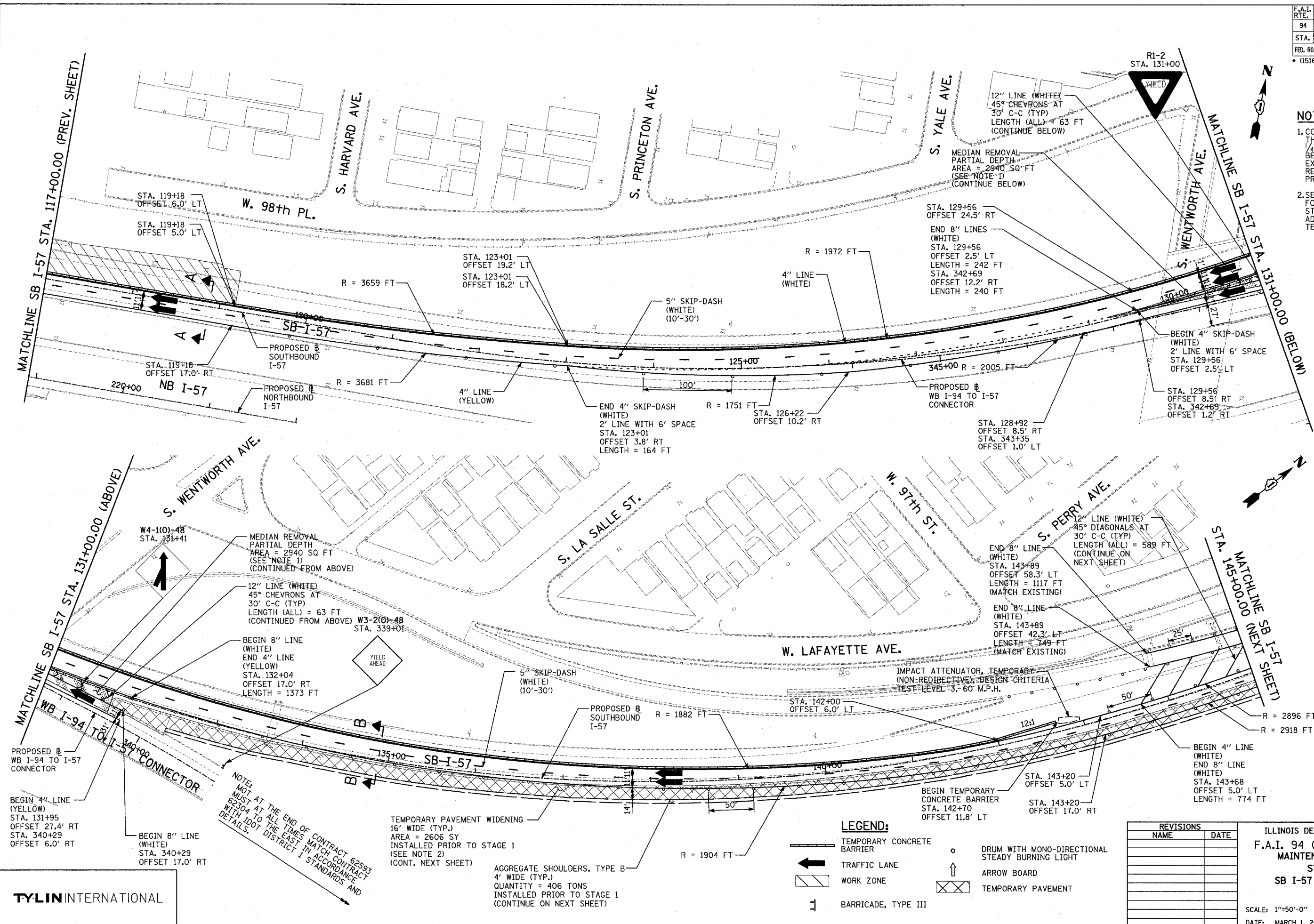


**NOTE:**

- CORRUGATED MEDIAN REMOVAL THICKNESS RANGES FROM 1/4" TO 3/4". MEDIAN MUST BE FLUSH WITH THE ADJACENT EXISTING PAVEMENT. MEDIAN REMOVAL MUST BE PERFORMED PRIOR TO THE START OF STAGE 1.
- SEE DRAINAGE AND UTILITY PLANS FOR LOCATIONS OF DRAINAGE STRUCTURES THAT WILL REQUIRE ADJUSTMENT IN THE AREA OF THE TEMPORARY PAVEMENT WIDENING.



REVISIONS	
NAME	DATE

ILLINOIS DEPARTMENT OF TRANSPORTATION  
**F.A.I. 94 (DAN RYAN EXPRESSWAY)**  
**MAINTENANCE OF TRAFFIC PLAN**  
**STAGE 1 - SB I-94**  
**SB I-57 STA. 117+00 TO 145+00**  
**SHEET 2 OF 7**

SCALE: 1"=50'-0" DRAWN BY: JDF  
 DATE: MARCH 1, 2006 CHECKED BY: RTM

**TYLIN INTERNATIONAL**

NOTE: NOT AT THE END OF CONTRACT 62593 MUST AT ALL TIMES MATCH CONTRACT 62304 TO THE EAST IN ACCORDANCE WITH IDOT DISTRICT 1 STANDARDS AND DETAILS.

TEMPORARY PAVEMENT WIDENING  
 16' WIDE (TYP.)  
 AREA = 2606 SY  
 INSTALLED PRIOR TO STAGE 1  
 (SEE NOTE 2)  
 (CONT. NEXT SHEET)

AGGREGATE SHOULDERS, TYPE B  
 4' WIDE (TYP.)  
 QUANTITY = 406 TONS  
 INSTALLED PRIOR TO STAGE 1  
 (CONTINUE ON NEXT SHEET)

**LEGEND:**

- TEMPORARY CONCRETE BARRIER
- TRAFFIC LANE
- WORK ZONE
- BARRICADE, TYPE III
- DRUM WITH MONO-DIRECTIONAL STEADY BURNING LIGHT
- ARROW BOARD
- TEMPORARY PAVEMENT