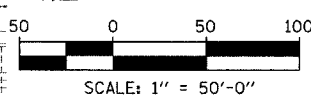
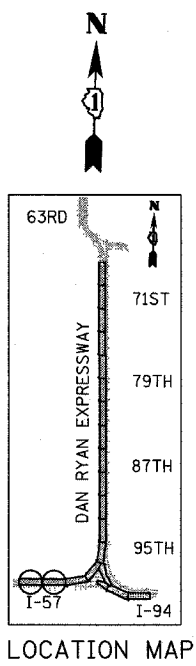


MATCHLINE SB I-57 STA. 87+00.00 (INSET ABOVE)

MATCHLINE SB I-57 STA. 102+00.00 (BELOW)

MATCHLINE SB I-57 STA. 102+00.00 (ABOVE)

MATCHLINE SB I-57 STA. 117+00.00 (NEXT SHEET)



NOTE:
ON ALL THE WINTER LANE CONFIGURATION PLAN SHEETS, CALLOUTS FOR TEMPORARY CONCRETE BARRIER ARE TO THE FRONT FACE OF THE WALL.

- LEGEND:**
- TEMPORARY CONCRETE BARRIER
 - TRAFFIC LANE
 - WORK ZONE
 - BARRICADE, TYPE III
 - DRUM WITH MONO-DIRECTIONAL STEADY BURNING LIGHT
 - ARROW BOARD
 - TEMPORARY PAVEMENT

REVISIONS	
NAME	DATE

ILLINOIS DEPARTMENT OF TRANSPORTATION
F.A.I. 94 (DAN RYAN EXPRESSWAY)
MAINTENANCE OF TRAFFIC PLAN
WINTER LANE CONFIGURATION - SB I-94
SB I-57 STA. 87+00 TO 117+00
SHEET 1 OF 7

SCALE: 1"=50'-0"
 DATE: MARCH 1, 2006
 DRAWN BY: JDF
 CHECKED BY: RTM

TYLIN INTERNATIONAL