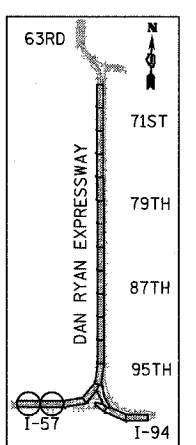
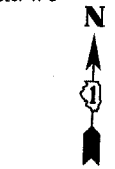


MATCHLINE SB I-57 STA. 87+00.00 (INSET ABOVE)

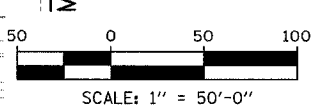
MATCHLINE SB I-57 STA. 102+00.00 (BELOW)

MATCHLINE SB I-57 STA. 102+00.00 (ABOVE)

MATCHLINE SB I-57 STA. 117+00.00 (NEXT SHEET)



LOCATION MAP



NOTE:
ON ALL THE STAGE 3A PLAN SHEETS, CALLOUTS FOR TEMPORARY CONCRETE BARRIER ARE TO THE FRONT FACE OF THE WALL.

LEGEND:

	TEMPORARY CONCRETE BARRIER		DRUM WITH MONO-DIRECTIONAL STEADY BURNING LIGHT
	TRAFFIC LANE		ARROW BOARD
	WORK ZONE		TEMPORARY PAVEMENT
	BARRICADE, TYPE III		

REVISIONS	
NAME	DATE

ILLINOIS DEPARTMENT OF TRANSPORTATION
F.A.I. 94 (DAN RYAN EXPRESSWAY)
MAINTENANCE OF TRAFFIC PLAN
STAGE 3A - SB I-94
SB I-57 STA. 87+00 TO 117+00
SHEET 1 OF 6

SCALE: 1"=50'-0"
 DATE: MARCH 1, 2006
 DRAWN BY: JDF
 CHECKED BY: RTM