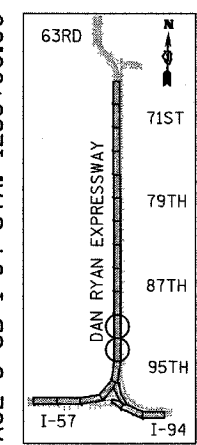
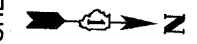
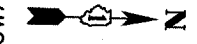
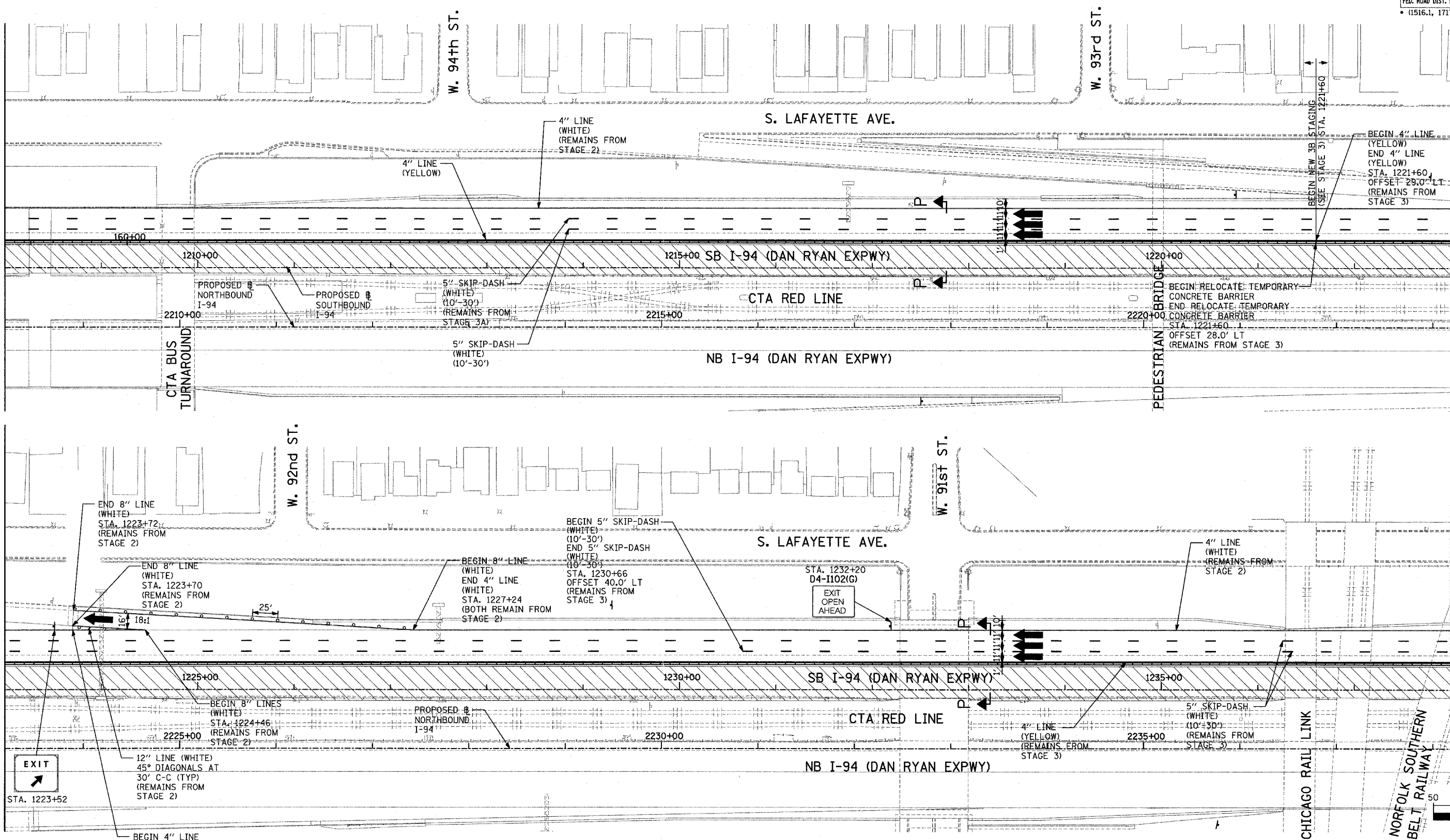


MATCHLINE SB I-94 STA. 1208+00.00 (PREV. SHEET)

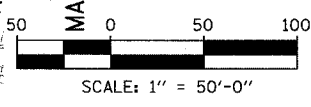
MATCHLINE SB I-94 STA. 1223+00.00 (ABOVE)

MATCHLINE SB I-94 STA. 1223+00.00 (BELOW)

MATCH STAGE 3 SB I-94 STA. 1238+00.00 (SEE SHEET 1 OF 3)



LOCATION MAP



TYLIN INTERNATIONAL

LEGEND:

| | | | |
|--|----------------------------|--|---|
| | TEMPORARY CONCRETE BARRIER | | DRUM WITH MONO-DIRECTIONAL STEADY BURNING LIGHT |
| | TRAFFIC LANE | | ARROW BOARD |
| | WORK ZONE | | TEMPORARY PAVEMENT |
| | BARRICADE, TYPE III | | |

| REVISIONS | |
|-----------|------|
| NAME | DATE |
| | |
| | |
| | |
| | |

ILLINOIS DEPARTMENT OF TRANSPORTATION
F.A.I. 94 (DAN RYAN EXPRESSWAY)
MAINTENANCE OF TRAFFIC PLAN
STAGE 3B - SB I-94
SB I-94 STA. 1208+00 TO 1238+00
SHEET 4 OF 6

SCALE: 1"=50'-0"
 DATE: MARCH 1, 2006

DRAWN BY: JDF
 CHECKED BY: RTM