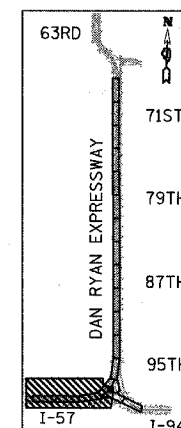
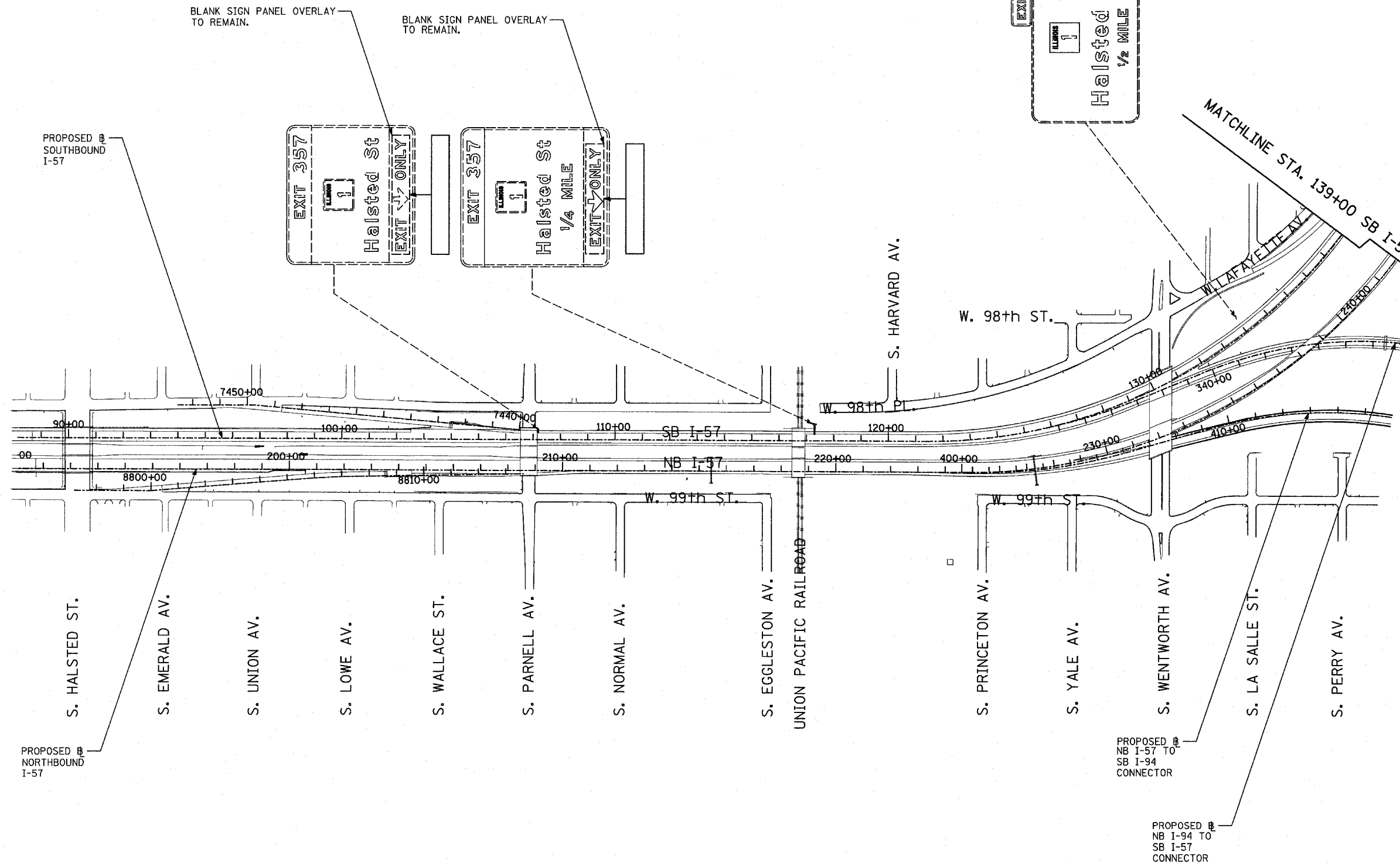




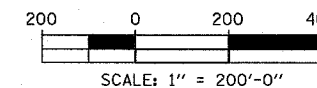
**SIGNING LEGEND:**

- EXISTING GROUND MOUNTED SIGN
- EXISTING OVERHEAD TRUSS MOUNTED SIGN
- EXISTING OVERHEAD SIGN STRUCTURE-BRIDGE MOUNTED
- EXISTING OVERHEAD CANTILEVER MOUNTED SIGN
- PROPOSED GROUND MOUNTED SIGN
- PROPOSED OVERHEAD SIGN STRUCTURE - TRUSS
- CONSTRUCTION ZONE
- EXISTING SIGN
- EXISTING SIGN TO BE REMOVED
- PROPOSED SIGN



LOCATION MAP

TYLIN INTERNATIONAL



REVISIONS	
NAME	DATE

ILLINOIS DEPARTMENT OF TRANSPORTATION  
 F.A.I. 94 (DAN RYAN EXPRESSWAY)  
**CONSTRUCTION SIGNING-STAGE 2**  
 SB I-57 STA. 100+00 TO STA 139+00  
 SHEET 1 OF 4

SCALE: 1" = 200'  
 DATE: MARCH 1, 2006

DRAWN BY: AMB  
 CHECKED BY: TGB