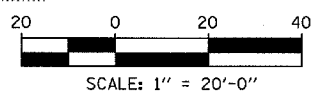
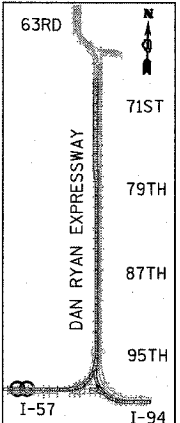
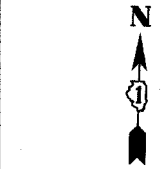
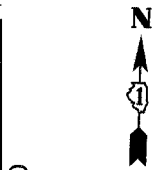
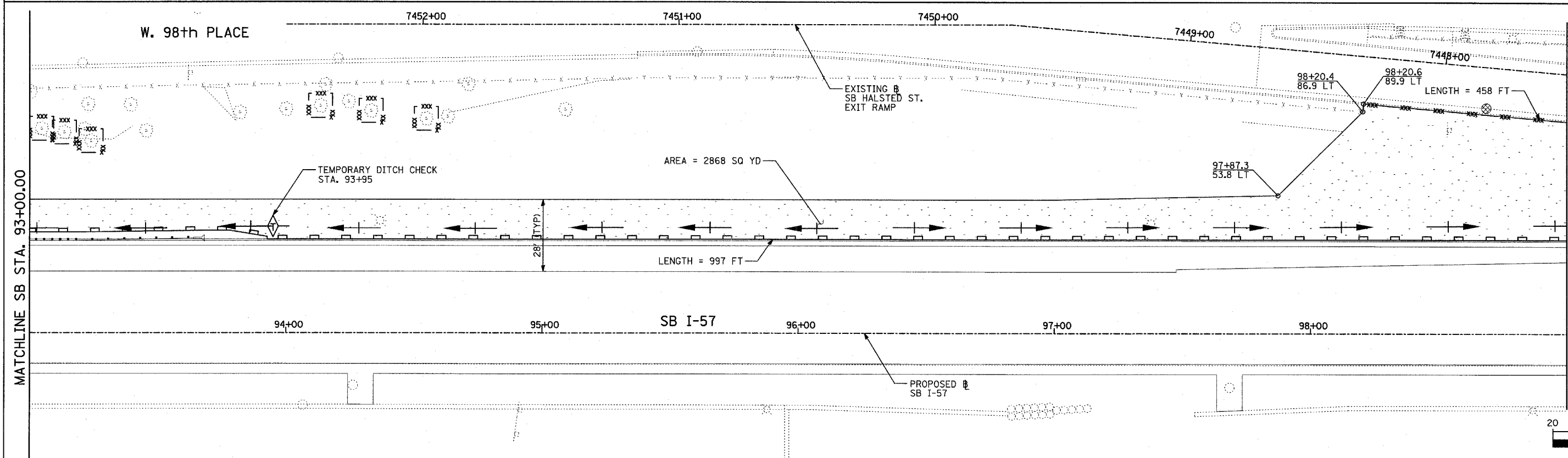
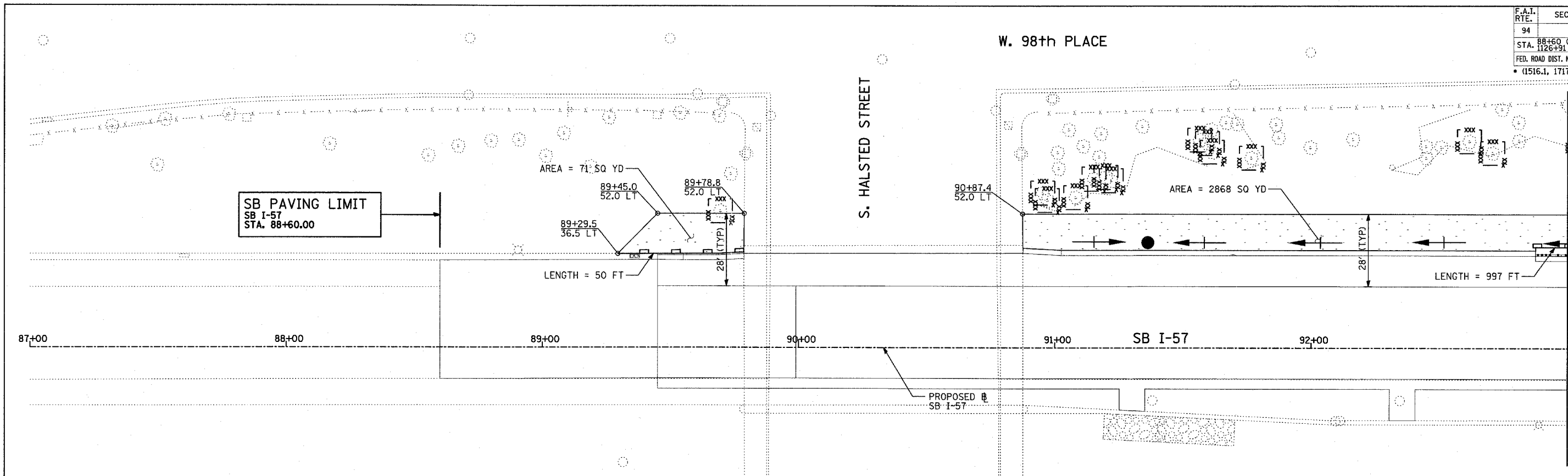


F.A.I. RTE.	SECTION	COUNTY	TOTAL SHEETS	SHEET NO.
94		COOK	764	256
STA. 88+60 (SB I-57) TO STA. 1313+00 (SB RYAN)				
FED. ROAD DIST. NO. ILLINOIS FED. AID PROJECT				
• (1516.1, 1717, & 1818) R-5 62593				



MATCHLINE SB STA. 93+00.00

MATCHLINE SB STA. 99+00.00

TYLIN INTERNATIONAL

TOTAL NUMBER OF INLET FILTERS THIS SHEET: 2
 TOTAL NUMBER OF TEMPORARY DITCH CHECKS THIS SHEET: 1
 TOTAL NUMBER OF TREES TO BE PROTECTED THIS SHEET: 19

LEGEND:

- TEMPORARY EROSION CONTROL SEEDING
- SEDIMENT CONTROL, SILT FENCE
- INLET FILTER, TO BE INSTALLED IN OFF PROJECT DRAINAGE STRUCTURES ACCEPTING STORMWATER RUNOFF
- TEMPORARY FENCE
- TEMPORARY DITCH CHECK SEEDING
- PROPOSED DRAINAGE SWALE (SEE DRAINAGE PLANS)
- EXISTING DRAINAGE SWALE
- TEMPORARY FENCE FOR TREE PROTECTION (15 FEET PER SIDE = 60 FEET TOTAL)

REVISIONS	
NAME	DATE

ILLINOIS DEPARTMENT OF TRANSPORTATION
 F.A.I. 94 (DAN RYAN EXPRESSWAY)
 EROSION CONTROL PLAN
 SB I-57
 STA. 88+60.00 TO 99+00.00
 SHEET 1 OF 24
 SCALE: 1"=20'
 DATE: MARCH 1, 2006
 DRAWN BY: JJS
 CHECKED BY: MPG