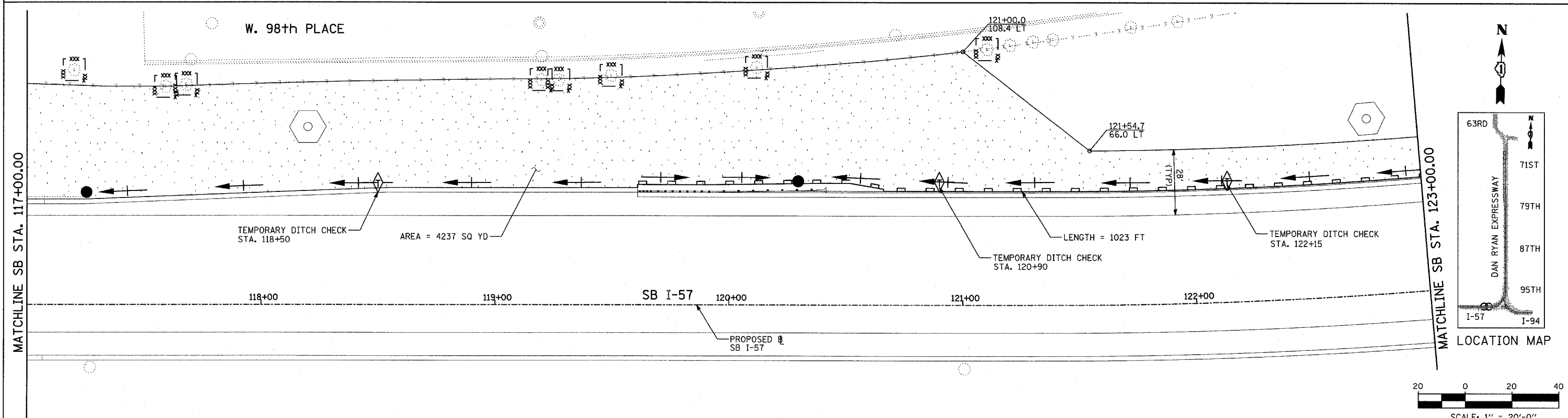
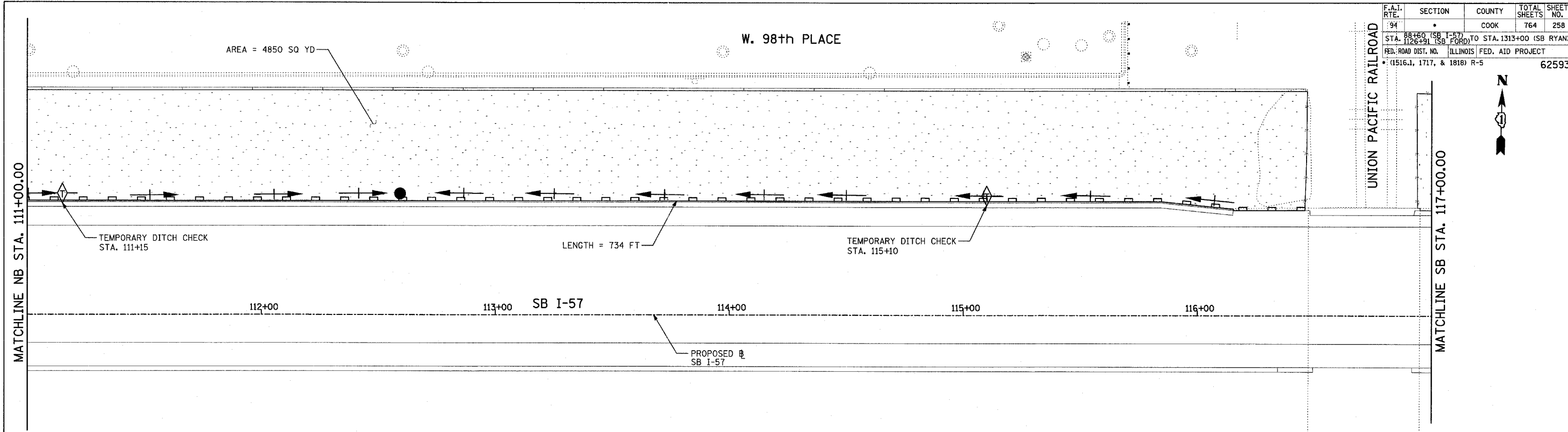


| | | | | |
|--|---------|--------|--------------|-----------|
| F.A.I. RTE. | SECTION | COUNTY | TOTAL SHEETS | SHEET NO. |
| 94 | | COOK | 764 | 258 |
| STA. 1126+91 (SB FORD) TO STA. 1313+00 (SB RYAN) | | | | |
| FED. ROAD DIST. NO. ILLINOIS FED. AID PROJECT | | | | |
| * (1516.1, 1717, & 1818) R-5 62593 | | | | |



TYLIN INTERNATIONAL

TOTAL NUMBER OF INLET FILTERS THIS SHEET: 0
 TOTAL NUMBER OF TEMPORARY DITCH CHECKS THIS SHEET: 5
 TOTAL NUMBER OF TREES TO BE PROTECTED THIS SHEET: 8

- LEGEND:**
- TEMPORARY EROSION CONTROL SEEDING
 - SEDIMENT CONTROL, SILT FENCE
 - INLET FILTER, TO BE INSTALLED IN OFF PROJECT DRAINAGE STRUCTURES ACCEPTING STORMWATER RUNOFF
 - TEMPORARY FENCE
 - TEMPORARY DITCH CHECK
 - PROPOSED DRAINAGE SWALE (SEE DRAINAGE PLANS)
 - EXISTING DRAINAGE SWALE
 - TEMPORARY FENCE FOR TREE PROTECTION (15 FEET PER SIDE = 60 FEET TOTAL)

| REVISIONS | |
|-----------|------|
| NAME | DATE |
| | |
| | |
| | |
| | |
| | |
| | |
| | |
| | |
| | |
| | |

ILLINOIS DEPARTMENT OF TRANSPORTATION
 F.A.I. 94 (DAN RYAN EXPRESSWAY)
 EROSION CONTROL PLAN
 SB I-57
 STA. 111+00.00 TO 123+00.00
 SHEET 3 OF 24

SCALE: 1"=20'
 DATE: MARCH 1, 2006

DRAWN BY: JJS
 CHECKED BY: MPG