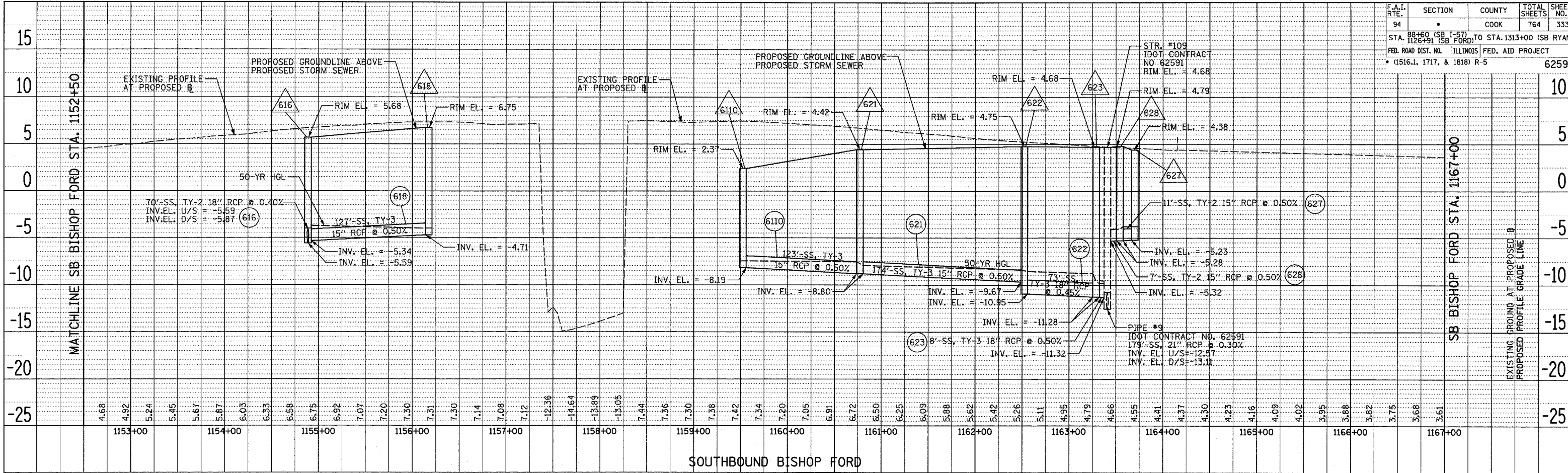
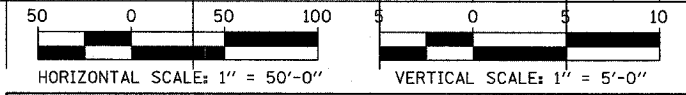
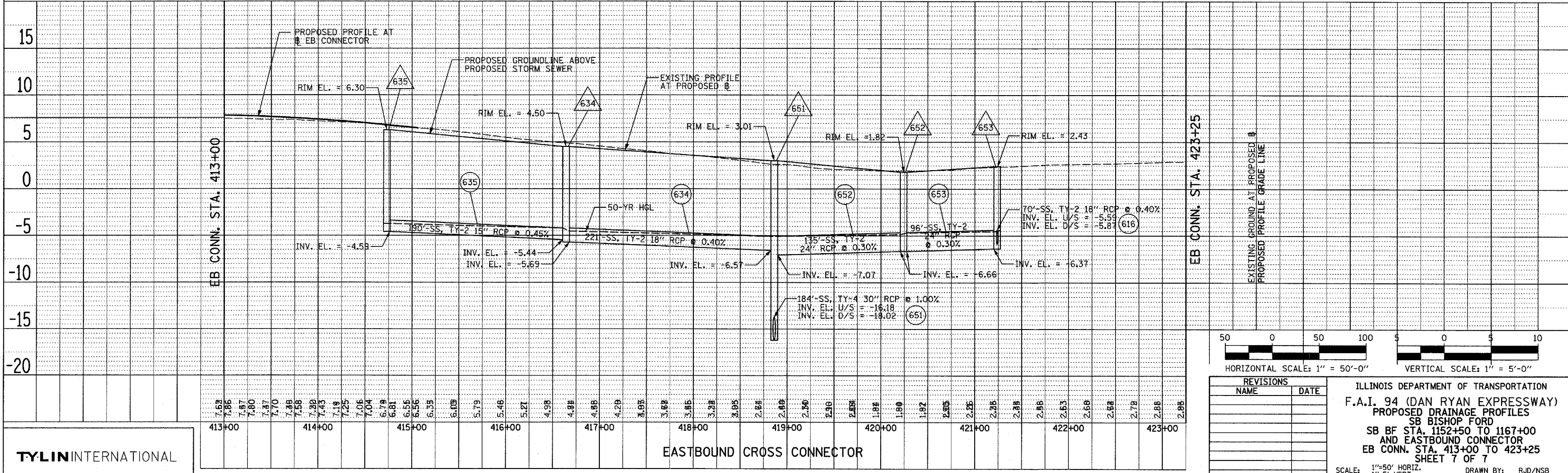


F.A.I. RTE. 94 SECTION COUNTY COOK TOTAL SHEETS 764 SHEET NO. 333  
 STA. 1126+91 (SB FORD) TO STA. 1313+00 (SB RYAN)  
 FED. ROAD DIST. NO. ILLINOIS FED. AID PROJECT  
 • (1516.1, 1717, & 1818) R-5 62593

DATE \_\_\_\_\_  
 BY \_\_\_\_\_  
 SURVEYED \_\_\_\_\_  
 PLOTTED \_\_\_\_\_  
 ALIGNMENT CHECKED \_\_\_\_\_  
 RECORDS CHECKED \_\_\_\_\_  
 CAD FILE NAME \_\_\_\_\_  
 NO. \_\_\_\_\_



DATE \_\_\_\_\_  
 BY \_\_\_\_\_  
 SURVEYED \_\_\_\_\_  
 PLOTTED \_\_\_\_\_  
 ALIGNMENT CHECKED \_\_\_\_\_  
 RECORDS CHECKED \_\_\_\_\_  
 CAD FILE NAME \_\_\_\_\_  
 NO. \_\_\_\_\_



REVISIONS	
NAME	DATE

ILLINOIS DEPARTMENT OF TRANSPORTATION  
 F.A.I. 94 (DAN RYAN EXPRESSWAY)  
**PROPOSED DRAINAGE PROFILES**  
 SB BISHOP FORD  
 SB BF STA. 1152+50 TO 1167+00  
 AND EASTBOUND CONNECTOR  
 EB CONN. STA. 413+00 TO 423+25  
 SHEET 7 OF 7

SCALE: 1"=50' HORIZ.  
 1"=5' VERT.

DATE: MARCH 1, 2006

DRAWN BY: RJD/NSB  
 CHECKED BY: DA

**TYLIN** INTERNATIONAL