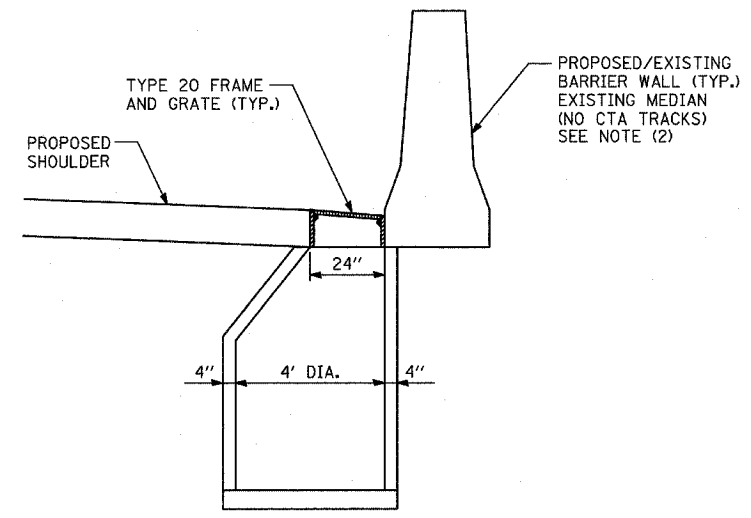
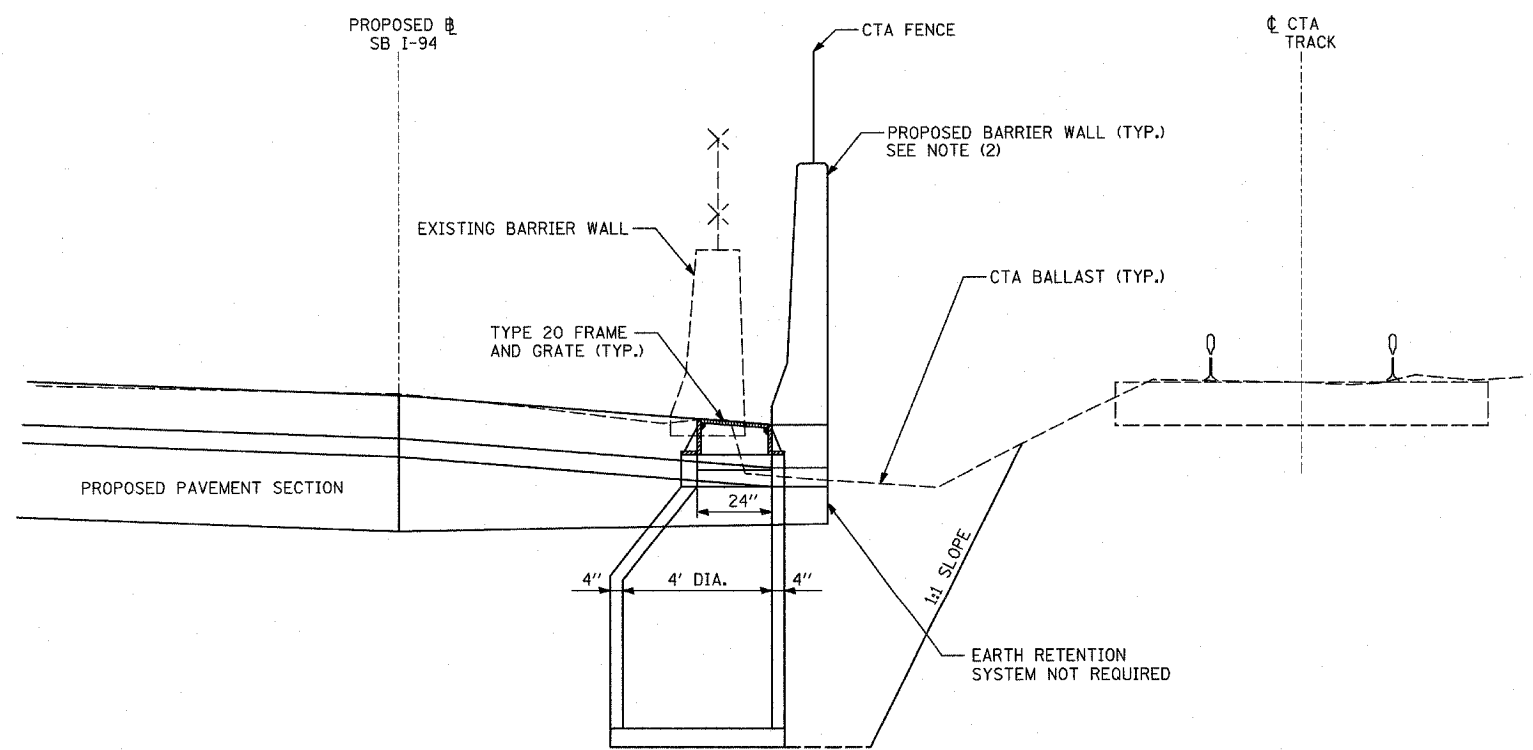


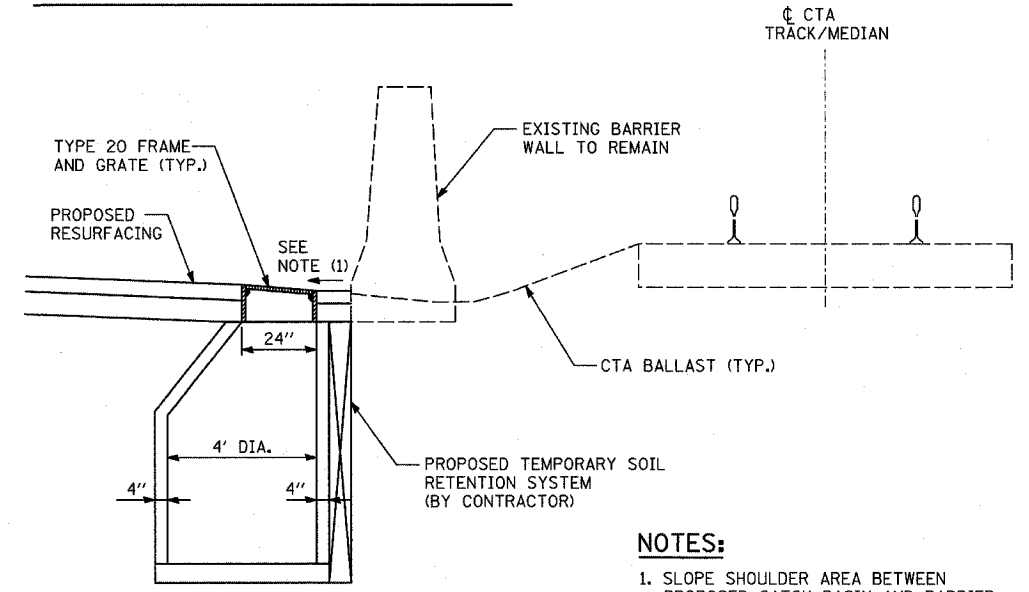
DETAIL 1
PROPOSED CATCH BASIN - TYPE "A"



DETAIL 3
PROPOSED CATCH BASIN - TYPE "A"



DETAIL 2
PROPOSED CATCH BASIN - TYPE "A"



DETAIL 4
PROPOSED CATCH BASIN - TYPE "A"

- NOTES:**
1. SLOPE SHOULDER AREA BETWEEN PROPOSED CATCH BASIN AND BARRIER WALL TOWARDS GRATE - TRANSITION BACK TO SHOULDER SLOPE WITHIN 10' EITHER WAY FROM ϕ OF GRATE.
 2. SEE MISCELLANEOUS DETAIL SHEETS FOR WALL DETAIL.

TYLIN INTERNATIONAL

REVISIONS	
NAME	DATE

ILLINOIS DEPARTMENT OF TRANSPORTATION
F.A.I. 94 (DAN RYAN EXPRESSWAY)

DRAINAGE DETAILS
SHEET 1 OF 3

SCALE: NONE
DATE: MARCH 1, 2006

DRAWN BY: MB
CHECKED BY: DA