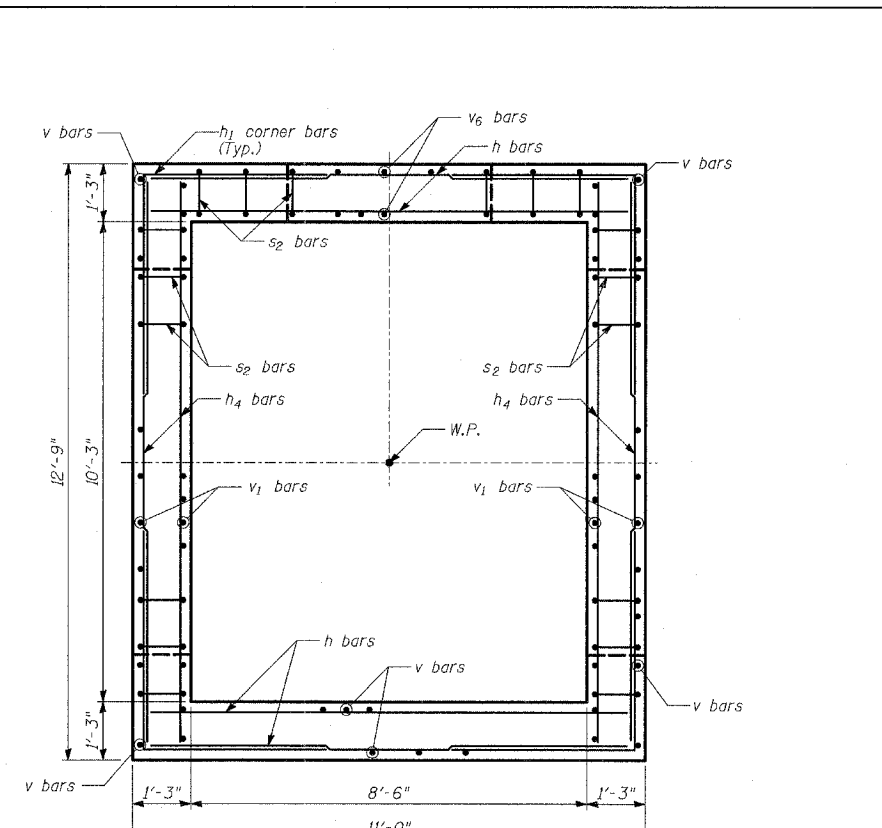
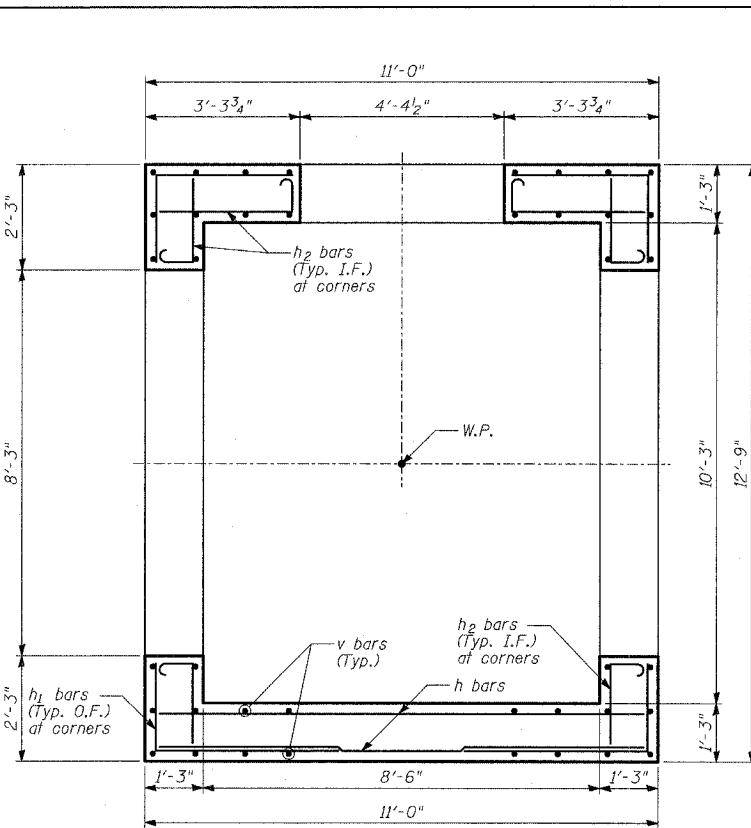


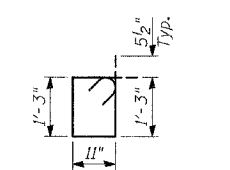
**ROOF SLAB PLAN**



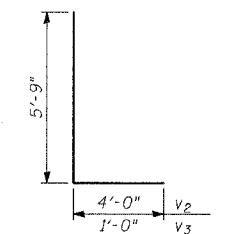
**SECTIONAL PLAN F-F**



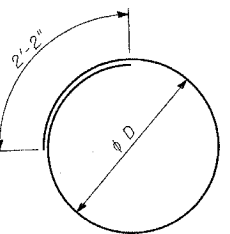
**SECTIONAL PLAN G-G**



**BAR s2**

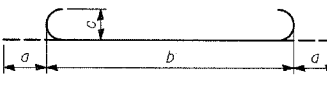


**BARS v2 & v3**



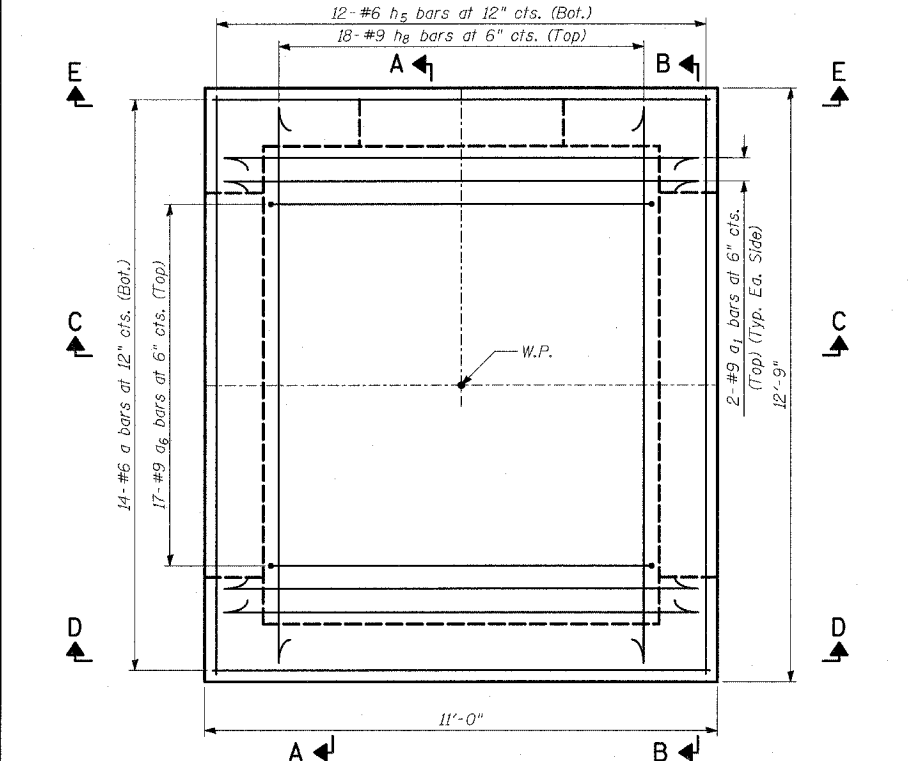
**BARS s & s1**

Bar	phi D
s	4'-8"
s1	3'-4"

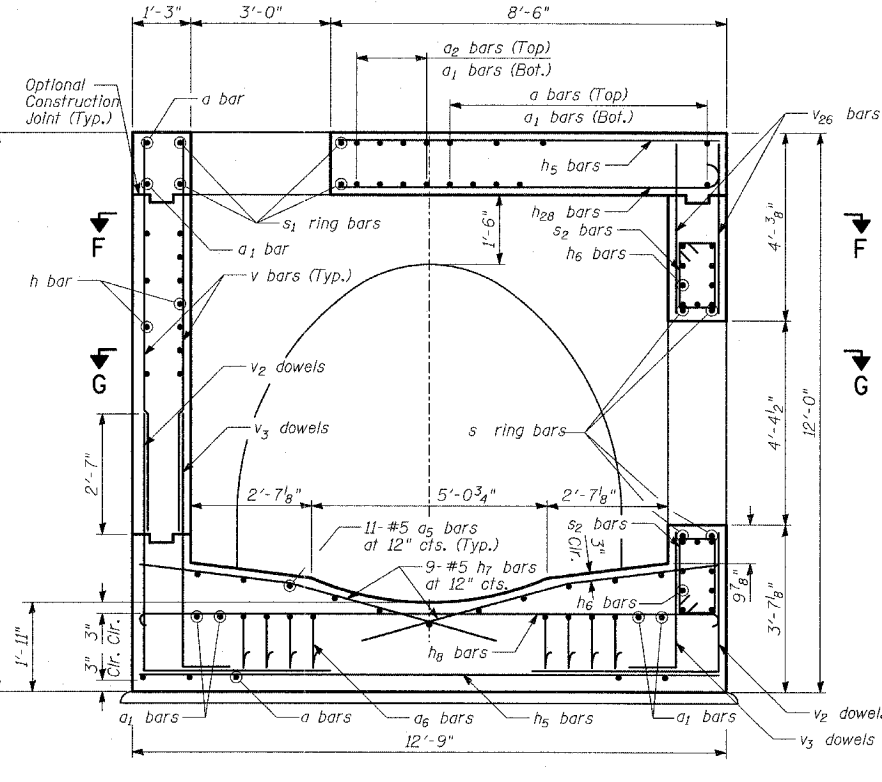


**BARS a1 & ha**

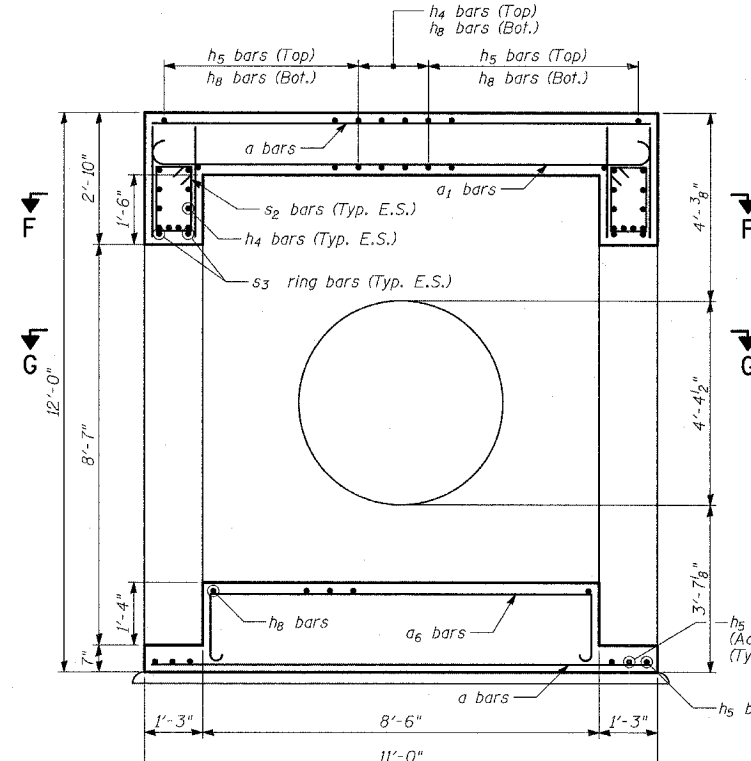
Bar	a	b	c
a1	1'-3"	10'-8"	11'-3/4"
ha	1'-3"	12'-5"	11'-3/4"



**BOTTOM SLAB PLAN**



**SECTION A-A**



**SECTION C-C**

**NOTES:**

- All dimensions and elevations shall be field verified prior to construction.
- Concrete pipe sizes shall be coordinated with openings provided into junction chamber before pouring concrete.
- Manhole Frame, Ladder Rungs, and any Inserts installation shall be coordinated with Roadway Plans.
- Concrete cover for reinforcement steel to be 2" unless otherwise noted.
- All concrete edges shall be chamfered 1 inch.
- All lap splices marked on the drawings are minimum.
- Concrete Compressive Strength  $f_c' = 3,500$  psi.
- Steel Yield Strength = 60,000 psi.
- Work this Sheet with Sheets 1 and 3 of 3.
- All cut bars to fit in field.

- E.F. - denotes Each Face
- E.S. - denotes Each Side
- I.F. - denotes Inside Face
- O.F. - denotes Outside Face

REVISIONS	
NAME	DATE

ILLINOIS DEPARTMENT OF TRANSPORTATION  
**F.A.I. 94 (DAN RYAN EXPRESSWAY)**  
**JUNCTION CHAMBER 63**  
**DETAILS 1**  
 S.N. \_\_\_\_\_ DESIGNED BY: TD, DJR  
 SCALE: \_\_\_\_\_ DRAWN BY: DJR  
 DATE: MARCH 1, 2006 CHECKED BY: MI

**TYLIN INTERNATIONAL**