

DRAINAGE STRUCTURE SCHEDULE

STRUCTURE NUMBER	STATION	OFFSET	STRUCTURE TYPE		DIA.	FRAME & LID	TOP OF FRAME	N INV.	E INV.	S INV.	W INV.
			MH	CB							
144	1170+41.89	34.0 RT		A(7)	4'	T20 F&G	0.82				-5.40
145	147+26.35	48.0 LT		A	4'	T20 F&G	0.32		-5.78		-6.03
146	143+81.44	10.0 RT		A	4'	T20 F&G	3.89				-1.94
151	151+49.24	109.3 LT	A		5'	T1F CL	12.44	-10.10		-10.10	
152	150+69.33	58.6 LT	A		5'	T1F CL	-0.91	-10.36	-7.53	-10.36	
153	149+07.94	54.1 LT	A		5'	T1F CL	-0.89	-10.82	-6.71	-11.32	-6.71
154	149+00.66	56.1 LT		C	2'	T1F OL	-0.87	-6.69			
155	1172+27.23	34.0 RT		A(7)	4'	T20 F&G	1.13				-6.11
156	149+08.47	48.0 LT		A	4'	T20 F&G	-0.59		-6.44		-6.69
157	150+71.04	34.0 RT		A(7)	4'	T20 F&G	1.41				-6.91
158	150+68.58	48.0 LT		A	4'	T20 F&G	-1.39		-7.24		-7.49
161	155+26.80	55.4 LT	A		4'	T1F CL	-1.25		-7.89	-7.89	
162	154+14.92	58.5 LT	A		4'	T1F CL	-2.71	-8.41	-8.41	-8.41	
163	152+29.99	54.4 LT	A		5'	T1F CL	-2.52	-9.29	-8.32	-8.32	-9.79
164	152+05.35	109.7 LT	A		5'	T1F CL	12.96		-9.95	-9.95	
165	155+30.82	31.5 RT		A(7)	4'	T20 F&G	-1.03				-7.55
166	155+31.10	42.7 LT		A	4'	T20 F&G	-3.16		-7.84		-7.84
167	154+17.19	31.5 RT		A(7)	4'	T20 F&G	-0.20				-7.55
168	154+15.00	48.0 LT		A	4'	T20 F&G	-3.12	-8.37	-7.87		-8.37
169	152+31.21	32.1 RT		A(7)	4'	T20 F&G	0.71				-7.73
1610	152+30.49	48.0 LT		A	4'	T20 F&G	-2.20		-8.05		-8.30
1611	152+21.55	55.2 LT		C	2'	T1F OL	-2.48	-8.30			
1612	157+50.05	39.0 LT		A(1)	2'	T20 F&G	-3.34	-5.17			
1613	157+70.05	39.0 LT		A(1)	2'	T20 F&G	-3.34			-5.17	
1614	157+56.34	39.0 LT		A	4'	T20 F&G	-3.35	-5.23	-6.73	-5.21	
1615	NOT USED	-	-	-	-	-	-	-	-	-	-
1616	157+63.93	30.8 RT		A(7)	4'	T20 F&G	-2.41	-8.03		-8.03	
1617	157+53.41	31.1 RT		A(7)	4'	T20 F&G	-2.42	-8.00			
1618	NOT USED	-	-	-	-	-	-	-	-	-	-
1619	155+64.53	40.6 LT		A	4'	T20 F&G	-3.06	-7.70		-7.70	
1620	155+93.95	37.6 LT		A	4'	T20 F&G	-3.06			-7.57	
1621	154+69.08	48.0 LT		A	4'	T20 F&G	-3.35			-8.15	-8.15
1622	154+69.00	54.6 LT		C	2'	T1F OL	-3.73		-8.12		
171	157+87.88	24.5 RT	A(6)		5'	T1F CL	-2.50	-8.85		-8.10	-7.02
172	NOT USED	-	-	-	-	-	-	-	-	-	-
173	NOT USED	-	-	-	-	-	-	-	-	-	-
174	NOT USED	-	-	-	-	-	-	-	-	-	-
175	158+37.62	39.0 LT		A(1)	2'	T20 F&G	-3.04	-5.62			
176	158+34.99	29.2 RT		C(7)	2'	T20 F&G	-2.65	-8.49			
177	158+90.71	39.0 LT		A(1)	2'	T20 F&G	-2.89		-5.84	-5.84	
178	1208+84.48	63.0 LT		A(1)	2'	T20 F&G	-2.56	-5.60	-5.60		
179	1209+44.48	63.0 LT		A(1)	2'	T20 F&G	-2.26			-5.34	
1710	1210+78.44	4.3 RT		A(7)	4'	T20 F&G	-1.34				-7.23
1711	1210+16.13	63.8 LT		A	4'	T20 F&G	-1.92	-8.17			
1712	1210+78.55	66.2 LT		A	4'	T20 F&G	-1.68	-7.51	-7.51		-7.51
1713	1211+44.85	68.7 LT		A	4'	T20 F&G	-1.45			-7.23	
1714	1212+06.71	4.9 RT		A(7)	4'	T20 F&G	-0.72	-6.70			-7.04
1715	1212+08.00	71.1 LT		A	4'	T20 F&G	-1.24	-7.09	-7.34	-6.34	-7.34
1716	1212+98.11	72.0 LT		A	4'	T20 F&G	-0.86			-6.71	
1717	1212+90.40	4.6 RT		A(7)	4'	T20 F&G	-0.29			-6.35	
1718	1209+47.87	4.0 RT		C(7)	2'	T20 F&G	-1.98			-7.81	
1719	158+85.92	24.5 RT	A(6)		5'	T1F CL	-2.49	-9.15		-9.15	-8.08
1720	NOT USED	-	-	-	-	-	-	-	-	-	-
1721	1212+00.00	77.3 LT		C	2'	T1F OL	-1.67	-6.30			
1722	157+75.42	30.4 RT		A(7)	4'	T20 F&G	-2.40	-8.06		-8.06	
181	1213+73.49	6.9 RT		A(7)	4'	T20 F&G	0.03				-6.26

STORM SEWER SCHEDULE

PIPE NUMBER	UPSTREAM STATION	DOWNSTREAM STATION	TYPE	DIA. (IN)	LENGTH (FT)	SLOPE %	T.B. (CU.YD)
126	140+51.42	140+59.96	2	12	17	0.44(5)	0.0
141	146+73.32	145+40.93	3	36	125	0.20	107.0
142	146+30.95	146+73.32	2	12	72	0.44	19.9
143	1168+71.92	145+65.63	2	12	119	0.44	34.4
144	1170+41.89	147+26.35	2	12	87	0.44	25.1
145	147+26.35	147+26.19	2	15	9	0.44	1.0
146	143+81.44	143+81.29	2	12	45	0.44	13.0
147	NOT USED	-	-	-	-	-	-
148	NOT USED	-	-	-	-	-	-
151	151+49.24	150+69.33	5	24	88	0.30	0.0
152	150+69.33	149+07.94	2	24	153	0.30	0.0
153	149+07.94	146+73.32	2	30	225	0.25	0.0
154	149+00.66	149+07.94	2	12	4	0.44	0.0
155	1172+27.23	149+08.47	2	12	76	0.44	22.0
156	149+08.47	149+07.94	2	15	4	0.44	1.0
157	150+71.04	150+68.58	2	12	75	0.44	21.7
158	150+68.58	150+69.33	2	15	9	0.44	1.0
161	155+26.80	154+14.92	2	18	106	0.50	0.0
162	154+14.92	152+29.99	2	18	177	0.50	0.0
163	152+29.99	152+05.35	5	24	56	0.30	0.0
164	152+05.35	151+49.24	JIP	24	49	0.30	0.0
165	155+30.82	155+31.10	2	12	67	0.44	19.4
166	155+31.10	155+26.80	2	15	12	0.44	1.0
167	154+17.19	154+15.00	2	12	72	0.44	20.8
168	154+15.00	154+14.92	2	18	9	0.44	1.1
169	152+31.21	152+30.49	2	12	73	0.44	21.1
1610	152+30.49	152+29.99	2	15	4	0.44	1.0
1611	152+21.55	152+29.99	2	12	5	0.44	0.0
1612	157+50.05	157+56.34	2	12	4	1.00	1.2
1613	157+70.05	157+56.34	2	12	11	1.00	3.2
1614	157+56.34	157+87.88	2	15	65	0.44	21.4
1615	NOT USED	-	-	-	-	-	-
1616	157+63.93	157+75.42	2	15	8	0.44	2.6
1617	157+53.41	157+63.93	2	15	7	0.44	2.3
1618	NOT USED	-	-	-	-	-	-
1619	155+64.53	155+26.80	2	12	30	0.44	8.7
1620	155+93.95	155+64.53	2	12	26	0.44	7.5
1621	154+69.08	154+15.00	2	12	50	0.44	14.5
1622	154+69.00	154+69.08	2	12	6	0.44	0.9
171	157+87.88	158+85.92	2	24	93	0.32	17.7
172	NOT USED	-	-	-	-	-	-
173	NOT USED	-	-	-	-	-	-
174	NOT USED	-	-	-	-	-	-
175	158+37.62	158+90.71	2	12	52	0.44	15.0
176	158+34.99	158+39.61	2	12	5	0.44	1.4
177	158+90.71	158+85.92	2	12	59	0.44	17.1
178	1208+84.48	1208+82.79	2	12	61	0.44	17.6
179	1209+44.48	1208+84.48	2	12	58	0.44	16.8
1710	1210+78.44	1210+78.55	2	12	63	0.44	18.2
1711	1210+16.13	1210+37.33	2	12	24	0.44	6.9
1712	1210+78.55	1210+78.56	2	12	12	0.44	1.2
1713	1211+44.85	1210+78.55	2	12	63	0.44	18.2
1714	1212+06.71	1212+08.00	2	15	69	0.44	22.7
1715	1212+08.00	1212+07.56	2	15	7	0.44	1.3
1716	1212+98.11	1212+08.00	2	12	87	0.44	25.1
1717	1212+90.40	1212+06.71	2	12	80	0.44	23.1

F.A.I. RTE.	SECTION	COUNTY	TOTAL SHEETS	SHEET NO.
94		COOK	764	350

STA. 88+60 (SB I-57) TO STA. 1313+00 (SB RYAN)
 STA. 1126+91 (SB FORD)
 FED. ROAD DIST. NO. ILLINOIS FED. AID PROJECT
 (1516.1, 1717, & 1818) R-5 62593

NOTES:

- INDICATES INLET TYPE A, 2' DIAMETER, TYPE 20 FRAME & GRATE.
- INDICATES MANHOLE, TYPE A, 6' DIAMETER, TYPE 1 FRAME, CLOSED LID, RESTRICTOR PLATE.
- INDICATES SEWER LATERAL WITH 45° CONNECTION. SEE SHEET "DETAIL OF STORM SEWER CONNECTIONS TO SEWER."
- INDICATES SEWER LATERAL WITH 30° CONNECTION. SEE SHEET "DETAIL OF STORM SEWER CONNECTIONS TO SEWER."
- INDICATES SEWER LATERAL WITH 60° CONNECTION. SEE SHEET "DETAIL OF STORM SEWER CONNECTIONS TO SEWER."
- INDICATES MANHOLE TYPE A WITH FLAT SLAB TOP, IDOT STANDARD 602601.
- INDICATES CATCH BASIN REQUIRING TEMPORARY SOIL RETENTION SYSTEM WITH INSTALLATION.
- ALL STRUCTURE ELEVATIONS IN RESURFACED AREAS COME FROM AERIAL SURVEY AND SHOULD BE VERIFIED IN THE FIELD AND ADJUSTED TO MATCH EXISTING CONDITIONS.

CASING SIZES

PIPE SIZE	CASING SIZE (OD)*	CASING WALL THICKNESS
12"	30"	0.500"
24"	42"	0.625"
30"	48"	0.688"
36"	48"	0.688"

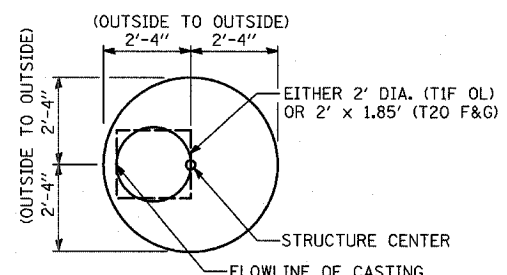
*ALL STEEL CASING SHALL MEET OR EXCEED ASTM A-139, GRADE B.

SEE THE DRAINAGE & UTILITY PLANS FOR LOCATION OF ALL STRUCTURES.

CATCH BASIN STATIONS ARE MEASURED TO CENTER OF STRUCTURE.

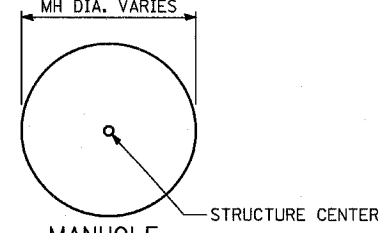
CATCH BASIN OFFSETS ARE MEASURED TO FLOWLINE OF CASING. (SEE BELOW)

FLOWLINE OF CASING IS LOCATED AT C. OF STRUCTURE FOR CATCH BASINS LOCATED IN SWALE AND GORE AREAS.



CATCH BASIN (PRECAST REINFORCED CONCRETE SECTION)

MANHOLE STATIONS AND OFFSETS ARE MEASURED TO CENTER OF STRUCTURE. (SEE BELOW)



MANHOLE

REVISIONS	
NAME	DATE

ILLINOIS DEPARTMENT OF TRANSPORTATION
 F.A.I. 94 (DAN RYAN EXPRESSWAY)

DRAINAGE STRUCTURE SCHEDULE

SCALE: NONE DRAWN BY: RD
 DATE: MARCH 1, 2006 CHECKED BY: DA

