

DRAINAGE STRUCTURE SCHEDULE

STRUCTURE NUMBER	STATION	OFFSET	STRUCTURE TYPE		DIA.	FRAME & LID	TOP OF FRAME	N INV.	E INV.	S INV.	W INV.
			MH	CB							
568	1129+86.05	22.0 LT		A	4'	T20 F&G	3.06	-3.07	-3.07	-3.07	-3.07
569	1129+86.04	32.4 RT		A	4'	T20 F&G	3.13	-3.53	-3.28	-3.28	-3.28
5610	1129+76.40	40.9 RT	A		5'	T1F CL	2.92	-3.57	-8.95	-3.57	-8.45
5611	1129+96.04	32.5 RT		A	4'	T20 F&G	3.14			-3.25	
5612	1129+76.05	32.4 RT		A	4'	T20 F&G	3.11				-3.25
5613	1129+67.54	48.2 RT		C	2'	T1F OL	2.39				-3.53
571	1131+41.00	22.0 LT		A	4'	T20 F&G	3.55	-2.28			
572	1131+38.37	32.4 RT		A	4'	T20 F&G	3.83	-2.49		-2.49	
573	1131+30.64	41.0 RT	A		5'	T1F CL	3.31		-7.78	-2.53	-7.28
574	1132+92.30	22.0 LT		A	4'	T20 F&G	4.23	-1.60			
575	1132+92.33	32.3 RT		A	4'	T20 F&G	4.45	-1.81		-1.81	
576	1132+79.79	41.0 RT	A		4'	T1F CL	4.57		-6.62	-1.87	
577	1135+91.70	31.6 RT		A(7)	4'	T20 F&G	4.27			-1.56	
578	1135+91.69	22.0 LT		A	4'	T20 F&G	4.55	-1.76			-1.76
579	1135+91.68	28.4 LT	A		4'	T1F CL	4.50	-1.78			-5.32
581	1137+29.07	33.0 RT		A	4'	T20 F&G	3.09			-2.74	
582	1137+28.81	22.0 LT		A	4'	T20 F&G	4.73	-2.95		-2.95	
583	1137+28.76	28.4 LT	A		4'	T1F CL	4.27	-2.97	-6.09		-6.34
584	1139+01.93	28.5 LT	A		5'	T1F CL	3.37	-4.75	-6.94	-3.13	-7.44
585	1140+27.35	29.0 LT	A		5'	T1F CL	2.08	-6.04	-7.81		-7.81
586	1141+78.01	29.3 LT	A(2)		6'	T1F CL	0.33	-7.42	-8.18		-8.18
587	1138+93.37	33.3 RT		A	4'	T20 F&G	1.31			-4.50	
588	1138+93.59	22.0 LT		A	4'	T20 F&G	3.88	-4.71		-4.71	
589	1138+96.23	33.2 LT		C	2'	T1F OL	1.89				-3.11
5810	1140+26.90	31.9 RT		A(7)	4'	T20 F&G	0.01			-5.82	
5811	1140+27.80	22.0 LT		A	4'	T20 F&G	2.63	-6.02		-6.02	
5812	1141+75.24	31.9 RT		A(7)	4'	T20 F&G	-1.37			-7.20	
5813	1141+75.27	22.0 LT		A	4'	T20 F&G	1.05	-7.40		-7.40	
5814	1142+42.45	34.1 LT		C	2'	T1F OL	-2.19		-5.69		
5815	1142+80.46	29.1 LT	A		5'	T1F CL	-0.38		-8.23		-8.23
5816	1142+03.59	29.4 LT	A(2)		6'	T1F CL	-0.06		-8.49		-8.49
591	1143+23.33	32.0 RT		A(7)	4'	T20 F&G	-3.13			-7.91	
592	1143+05.22	22.3 LT		A	4'	T20 F&G	-0.46	-8.13	-8.13		
593	1145+22.13	31.9 RT		A(7)	4'	T20 F&G	-4.15		-10.25		
594	1145+11.98	31.9 RT		A(7)	4'	T20 F&G	-4.20		-10.28		-10.28
595	1145+01.83	32.0 RT		A(7)	4'	T20 F&G	-4.26			-10.56	-10.31
596	1145+01.79	29.9 LT		A	4'	T20 F&G	-1.33	-10.80	-10.80	-10.80	-10.80
597	1144+96.78	45.4 LT	A		6'	T1F CL	-2.33	-10.86	-7.83		-11.11
598	1145+10.10	47.4 LT	A(2)		6'	T1F CL	-2.10		-11.15		-11.15
599	1144+67.66	38.5 LT		C	2'	T1F OL	-4.23			-7.71	
5910	1145+11.68	30.1 LT		A	4'	T20 F&G	-1.23		-10.77		
5911	1145+88.85	31.9 RT		A(7)	4'	T20 F&G	-3.64				-9.47
5912	1145+37.21	50.0 LT	A(2)		6'	T1F CL	-1.67		-11.63		-11.63
5913	1146+19.57	49.2 LT	A		5'	T1F CL	-1.75	-10.14	-11.39		-11.39
5914	1148+11.33	49.0 LT	A		5'	T1F CL	-1.19	-7.45	-10.91	-7.45	-10.41
5915	1146+17.37	31.9 RT		A(7)	4'	T20 F&G	-3.52		-9.58	-9.58	
5916	1146+18.28	32.9 LT		A	4'	T20 F&G	-0.47	-9.83		-10.08	
5917	1148+11.29	31.8 RT		A(7)	4'	T20 F&G	-1.31			-7.14	
5918	1148+11.31	34.6 LT		A	4'	T20 F&G	1.00	-7.40		-7.40	
5919	1148+11.33	55.2 LT		C	2'	T1F OL	-0.74	-7.44			
5920	1144+91.96	27.7 LT		A	4'	T20 F&G	-1.41				-10.77
601	1149+82.09	31.4 RT		A(7)	4'	T20 F&G	0.44			-5.66	
602	1149+65.79	39.2 LT		A	4'	T20 F&G	1.49	-5.95		-5.95	
603	1149+65.47	59.3 LT	A		5'	T1F CL	-0.44	-6.03	-9.95		-9.45
604	1153+13.27	31.6 RT		A(7)	4'	T20 F&G	3.62		-3.17		
605	1151+34.48	31.8 RT		A(7)	4'	T20 F&G	1.94			-4.16	

STORM SEWER SCHEDULE

PIPE NUMBER	UPSTREAM STATION	DOWNSTREAM STATION	TYPE	DIA. (IN)	LENGTH (FT)	SLOPE %	T.B. (CU.YD)
562	1128+22.22	1128+06.09	2	15	15	0.44	3.6
563	1128+06.09	1127+64.85	3	36	37	0.50	0.0
564	1127+64.85	1127+51.71	3	36	8	0.50	0.0
565	1129+76.05	1129+86.05	2	15	6	0.44	2.0
566	1129+96.05	1129+86.05	2	15	6	0.44	2.0
567	1129+86.05	1129+86.05	2	12	11	0.44	2.0
568	1129+86.05	1129+86.04	2	15	47	0.44	15.5
569	1129+86.04	1129+76.40	2	18	10	0.44	2.1
5610	1129+76.40	1128+06.09	3	30	166	0.50	0.0
5611	1129+96.04	1129+86.04	2	15	6	0.44	2.0
5612	1129+76.05	1129+86.04	2	15	6	0.44	2.0
5613	1129+67.54	1129+76.40	2	12	8	0.44	0.0
571	1131+41.00	1131+38.37	2	12	47	0.44	13.6
572	1131+38.37	1131+30.64	2	12	9	0.44	1.7
573	1131+30.64	1129+76.40	2	24	150	0.45	0.0
574	1132+92.30	1132+92.33	2	12	47	0.44	13.6
575	1132+92.33	1132+79.79	2	12	13	0.44	2.6
576	1132+79.79	1131+30.64	2	18	146	0.45	0.0
577	1135+91.70	1135+91.69	2	12	46	0.44	13.3
578	1135+91.69	1135+91.68	2	12	5	0.44	0.9
579	1135+91.68	1137+28.76	2	15	134	0.58	0.0
581	1137+29.07	1137+28.81	2	12	47	0.44	13.6
582	1137+28.81	1137+28.76	2	12	5	0.44	0.6
583	1137+28.76	1139+01.93	2	18	172	0.35	0.0
584	1139+01.93	1140+27.35	2	24	123	0.30	0.0
585	1140+27.35	1141+78.01	2	24	148	0.25	0.0
586	1141+78.01	1141+90.80	2	24	8	0.25	0.0
587	1138+93.37	1138+93.59	2	12	48	0.44	13.9
588	1138+93.59	1139+01.93	2	12	8	0.44	1.4
589	1138+96.23	1139+01.93	2	12	4	0.44	0.0
5810	1140+26.90	1140+27.80	2	12	46	0.44	13.3
5811	1140+27.80	1140+27.35	2	12	5	0.44	0.6
5812	1141+75.24	1141+75.27	2	12	46	0.44	13.3
5813	1141+75.27	1141+78.01	2	12	5	0.44	0.9
5814	1142+42.45	1142+33.50	2	12	10	0.44(4)	0.0
5815	1142+80.46	1142+03.59	2	24	74	0.35	0.0
5816	1142+03.59	1141+90.80	2	24	8	0.38	0.0
591	1143+23.33	1143+05.22	2	12	50	0.44	14.5
592	1143+05.22	1142+80.46	2	12	23	0.44	4.0
593	1145+22.13	1145+11.98	2	15	6	0.44	2.0
594	1145+11.98	1145+01.83	2	15	6	0.44	2.0
595	1145+01.83	1145+01.79	2	18	54	0.44	19.3
596	1145+01.79	1144+96.78	2	18	14	0.44	1.8
597	1144+96.78	1145+10.10	2	21	8	0.44	0.0
598	1145+10.10	1145+23.58	2	21	8	0.38	0.0
599	1144+67.66	1144+96.78	2	12	27	0.44	0.0
5910	1145+11.68	1145+01.79	2	15	6	0.44	2.0
5911	1145+88.85	1146+17.37	2	12	25	0.44	7.2
5912	1145+37.21	1145+23.58	2	30	8	0.25	0.0
5913	1146+19.57	1145+37.21	2	30	79	0.30	0.0
5914	1148+11.33	1146+19.57	2	30	192	0.25	0.0
5915	1146+17.37	1146+18.28	2	12	57	0.44	16.5
5916	1146+18.28	1146+19.57	2	15	14	0.44	1.3
5917	1148+11.29	1148+11.31	2	12	59	0.44	17.1
5918	1148+11.31	1148+11.33	2	12	12	0.44	0.9
5919	1148+11.33	1148+11.33	2	12	3	0.44	0.0

F.A.I. RTE.	SECTION	COUNTY	TOTAL SHEETS	SHEET NO.
94		COOK	764	354

88+60 (SB I-57) TO STA. 1126+91 (SB FORD)
 STA. 1126+91 (SB FORD) TO STA. 1131+00 (SB RYAN)
 FED. ROAD DIST. NO. ILLINOIS FED. AID PROJECT
 * (1516.1, 1717, & 1818) R-5 62593

NOTES:

- INDICATES INLET TYPE A, 2' DIAMETER, TYPE 20 FRAME & GRATE.
- INDICATES MANHOLE, TYPE A, 6' DIAMETER, TYPE 1 FRAME, CLOSED LID, RESTRICTOR PLATE.
- INDICATES SEWER LATERAL WITH 45° CONNECTION. SEE SHEET "DETAIL OF STORM SEWER CONNECTIONS TO SEWER."
- INDICATES SEWER LATERAL WITH 30° CONNECTION. SEE SHEET "DETAIL OF STORM SEWER CONNECTIONS TO SEWER."
- INDICATES SEWER LATERAL WITH 60° CONNECTION. SEE SHEET "DETAIL OF STORM SEWER CONNECTIONS TO SEWER."
- INDICATES MANHOLE TYPE A WITH FLAT SLAB TOP, IDOT STANDARD 602601.
- INDICATES CATCH BASIN REQUIRING TEMPORARY SOIL RETENTION SYSTEM WITH INSTALLATION.
- ALL STRUCTURE ELEVATIONS IN RESURFACED AREAS COME FROM AERIAL SURVEY AND SHOULD BE VERIFIED IN THE FIELD AND ADJUSTED TO MATCH EXISTING CONDITIONS.

CASING SIZES

PIPE SIZE	CASING SIZE (OD)*	CASING WALL THICKNESS
12"	30"	0.500"
24"	42"	0.625"
30"	48"	0.688"
36"	48"	0.688"

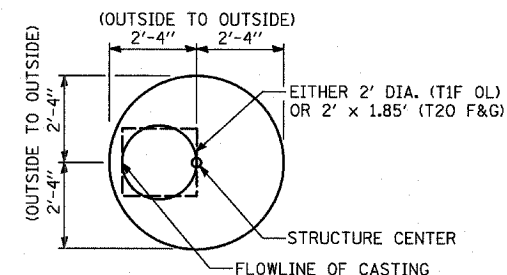
*ALL STEEL CASING SHALL MEET OR EXCEED ASTM A-139, GRADE B.

SEE THE DRAINAGE & UTILITY PLANS FOR LOCATION OF ALL STRUCTURES.

CATCH BASIN STATIONS ARE MEASURED TO CENTER OF STRUCTURE.

CATCH BASIN OFFSETS ARE MEASURED TO FLOWLINE OF CASING. (SEE BELOW)

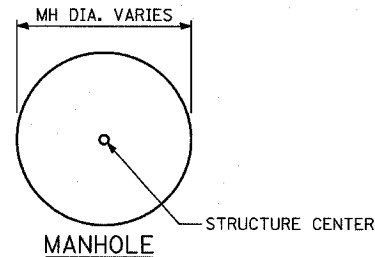
FLOWLINE OF CASING IS LOCATED AT 1/4 OF STRUCTURE FOR CATCH BASINS LOCATED IN SWALE AND GORE AREAS.



CATCH BASIN

(PRECAST REINFORCED CONCRETE SECTION)

MANHOLE STATIONS AND OFFSETS ARE MEASURED TO CENTER OF STRUCTURE. (SEE BELOW)



MANHOLE

REVISIONS	
NAME	DATE