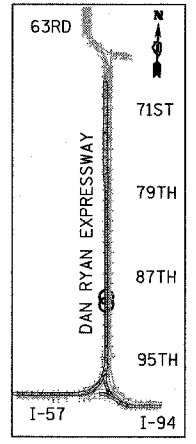
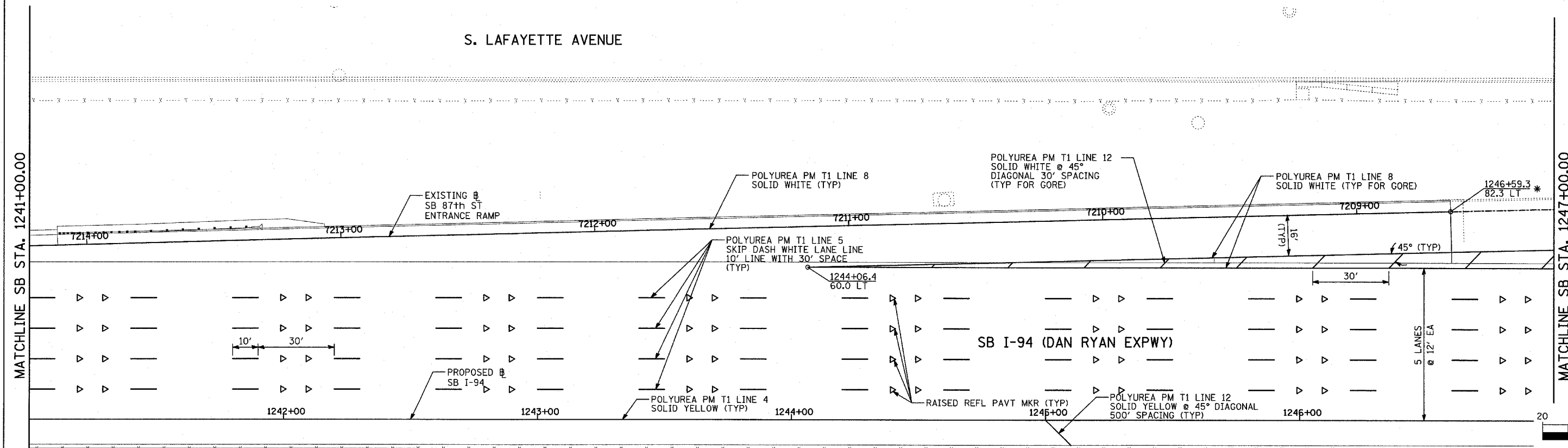
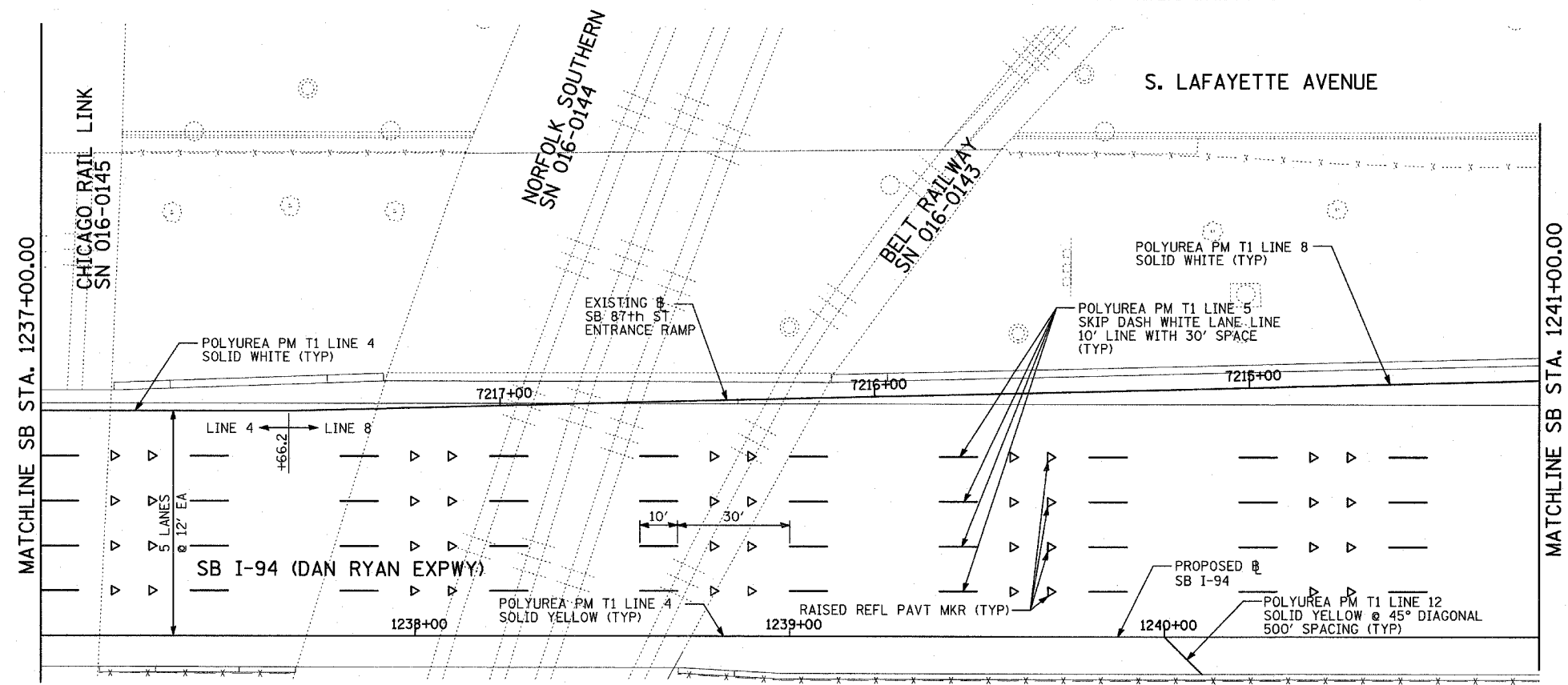
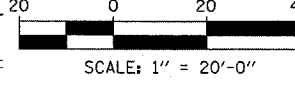


F.A.I. RTE.	SECTION	COUNTY	TOTAL SHEETS	SHEET NO.
94		COOK	764	400

STA. 88+60 (SB I-57) TO STA. 1313+00 (SB RYAN)
 STA. 1126+91 (SB FORD)
 FED. ROAD DIST. NO. ILLINOIS FED. AID PROJECT
 * (1516.1, 1717, & 1818) R-5 62593



LOCATION MAP



PAVEMENT MARKING NOTES:

- PAVEMENT MARKINGS SHALL BE IN ACCORDANCE WITH IDOT DISTRICT ONE STANDARD TC-12. RAISED PAVEMENT MARKERS SHALL NOT BE INSTALLED, EXCEPT AS SHOWN ON THE PLANS.
- THE RESIDENT ENGINEER SHALL CONTACT JULIA FOX (847) 705-4151, EXPRESSWAY TRAFFIC CONTROL SUPERVISOR, PRIOR TO PLACING ANY PAVEMENT MARKINGS.

TYLIN INTERNATIONAL

* MATCH WITH EXISTING PAVEMENT MARKING AT THIS POINT

REVISIONS	
NAME	DATE

ILLINOIS DEPARTMENT OF TRANSPORTATION
 F.A.I. 94 (DAN RYAN EXPRESSWAY)
 PAVEMENT MARKING PLAN
 SB I-94 (DAN RYAN EXPRESSWAY)
 STA. 1237+00.00 TO 1247+00.00
 SHEET 13 OF 25

SCALE: 1"=20'
 DATE: MARCH 1, 2006
 DRAWN BY: JUS
 CHECKED BY: MPG