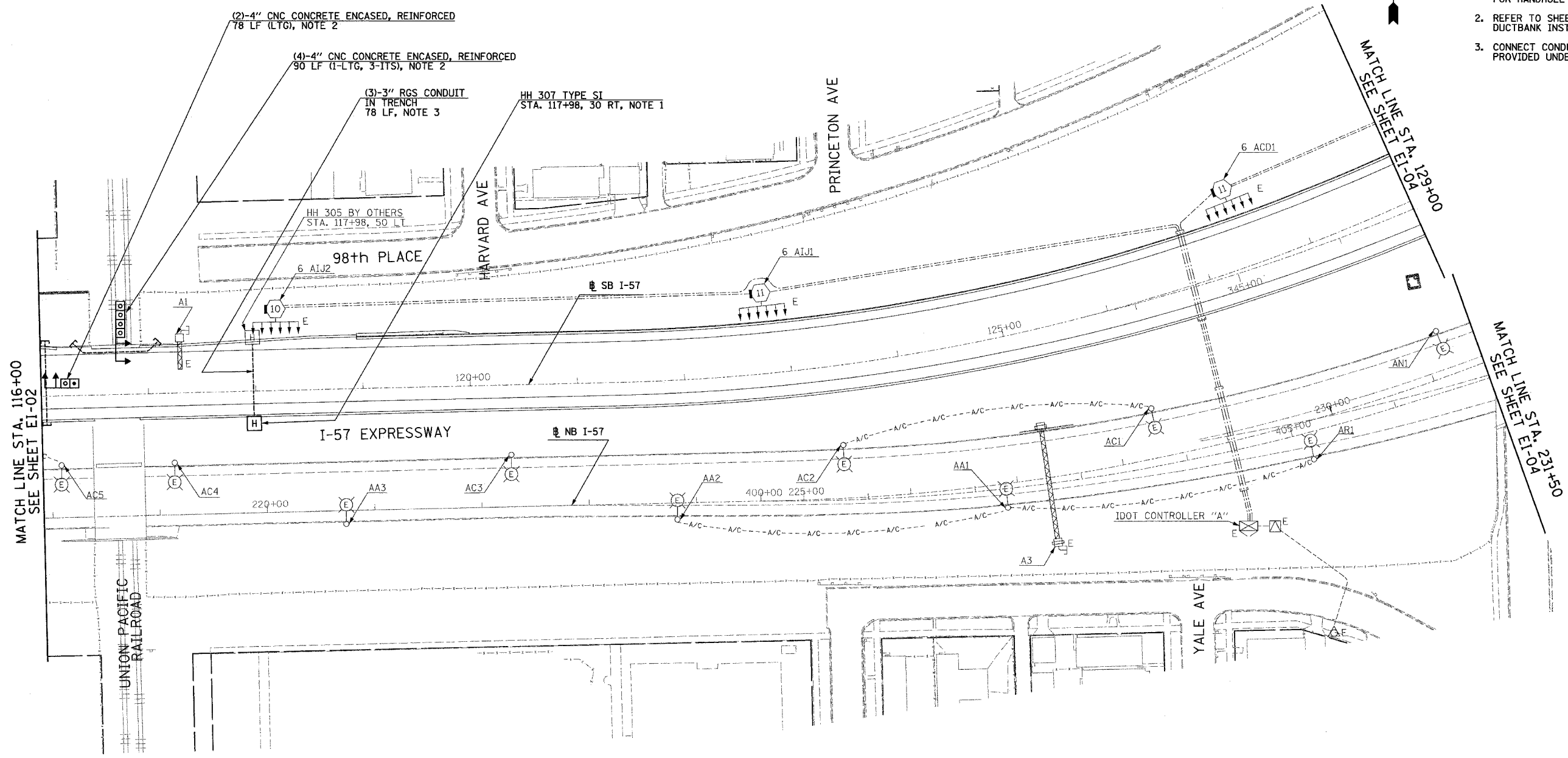


F.A.I. RTE.	SECTION	COUNTY	TOTAL SHEETS	SHEET NO.
94	*	COOK	764	463
STA. 116+00		TO STA. 129+00		
FED. ROAD DIST. NO.		ILLINOIS FED. AID PROJECT		
* (1516.1, 1717, 1818) R-5		62593		

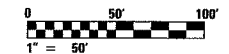
- NOTES:**
1. REFER TO SHEETS EI-103 AND EI-106 FOR HANDHOLE DETAILS.
 2. REFER TO SHEET EI-102 AND EI-103 FOR DUCTBANK INSTALLATION DETAILS.
 3. CONNECT CONDUITS TO EXISTING HH 305 PROVIDED UNDER CONTRACT 62583.



MATCH LINE STA. 116+00
SEE SHEET EI-02

MATCH LINE STA. 129+00
SEE SHEET EI-04

MATCH LINE STA. 131+50
SEE SHEET EI-04



23/EI-03

SINGH
SINGH & ASSOCIATES, INC.
CONSULTING ENGINEERS

300 W. ADAMS ST.
CHICAGO, IL 60606
TEL: (312) 629-0240
FAX: (312) 629-8449

REVISIONS	
NAME	DATE

ILLINOIS DEPARTMENT OF TRANSPORTATION
F.A.I. 94 (DAN RYAN EXPRESSWAY)

ELECTRICAL INFRASTRUCTURE PLANS
PROPOSED IMPROVEMENTS

SCALE: 1"=50' DRAWN BY: VK
DATE: MARCH 1, 2006 CHECKED BY: TM

2/27/2006 11:42:55 AM