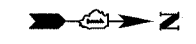
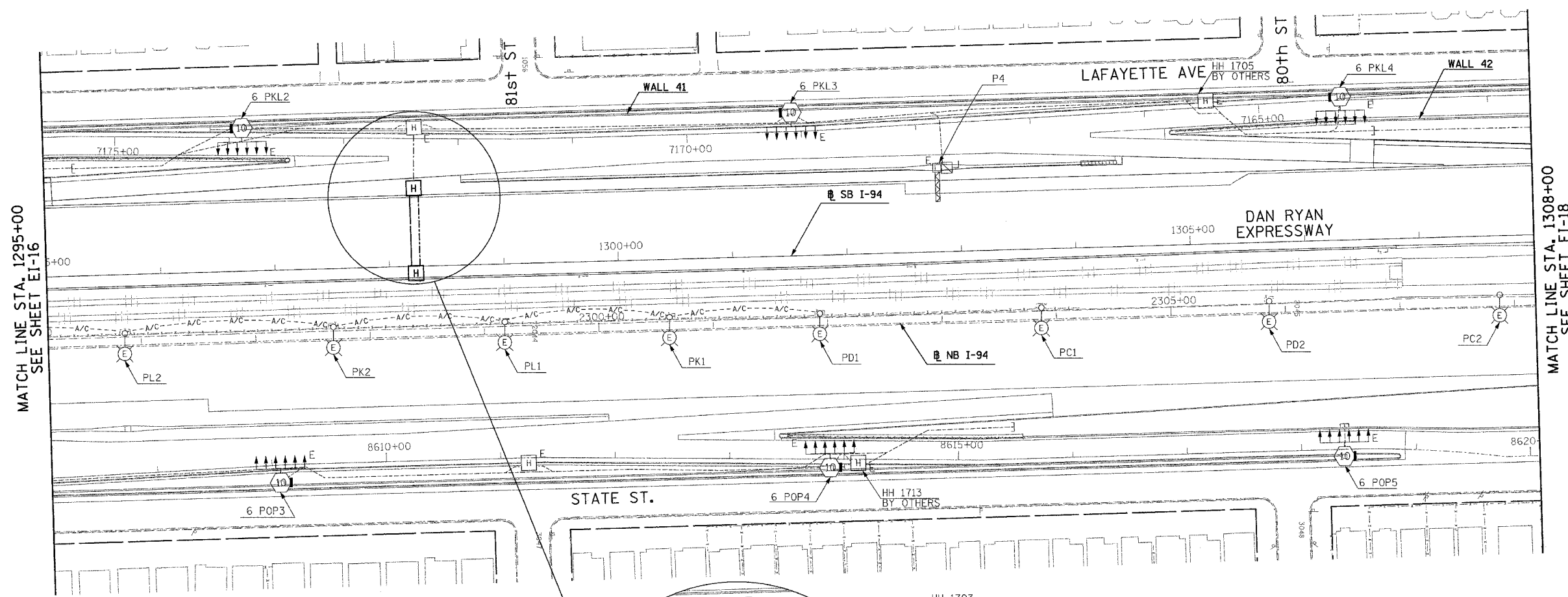


F.A.I. RTE.	SECTION	COUNTY	TOTAL SHEETS	SHEET NO.
94	*	COOK	764	477
STA. 1295+00		TO STA. 1308+00		
FED. ROAD DIST. NO.		ILLINOIS FED. AID PROJECT		
* (1516.1, 1717, 1818) R-5		62593		



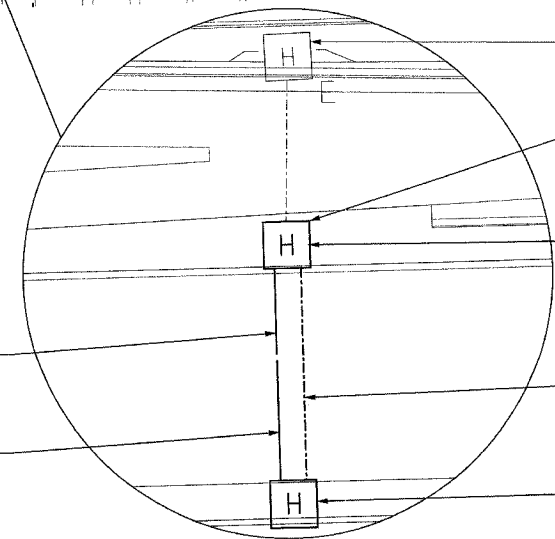
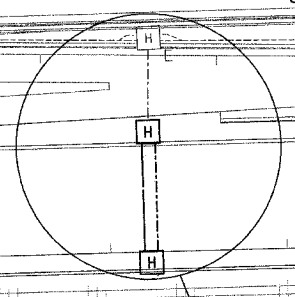
**NOTES:**

1. REFER SHEET EI-110 FOR HANDHOLE DETAIL.
2. CONNECT EXISTING CONDUIT INSTALLED UNDER CONTRACT 62594 TO HANDHOLE 1702 INSTALLED UNDER THIS CONTRACT (62593).
3. REFER SHEET EI-106 FOR HANDHOLE DETAIL.



MATCH LINE STA. 1295+00  
SEE SHEET EI-16

MATCH LINE STA. 1308+00  
SEE SHEET EI-18



3" PVC CONC. ENC.  
30 LF

3" PVC CONC. ENC.  
40 LF

HH 1703  
BY OTHERS

**NOTE 2**

HH 1702, TYPE S1  
STA. 1298+23, 68LT, NOTE 3

2" RGS CONDUIT IN TRENCH,  
72 LF

HH 1709, TYPE S1  
STA. 1298+23, IN SHOULDER, NOTE 1

**SINGH** 300 W. ADAMS ST.  
CHICAGO, IL 60606  
SINGH & ASSOCIATES, INC. TEL: (312) 629-0240  
CONSULTING ENGINEERS FAX: (312) 629-8449

REVISIONS	
NAME	DATE

ILLINOIS DEPARTMENT OF TRANSPORTATION  
F.A.I. 94 (DAN RYAN EXPRESSWAY)

ELECTRICAL INFRASTRUCTURE PLANS  
PROPOSED IMPROVEMENTS

SCALE: 1"=50'      DRAWN BY: VK  
DATE: MARCH 1, 2006      CHECKED BY: TM

23/EI-17

J:\V5\dgn\10217535\_ei-17-023.dgn 3:55:39 PM 2/20/2006