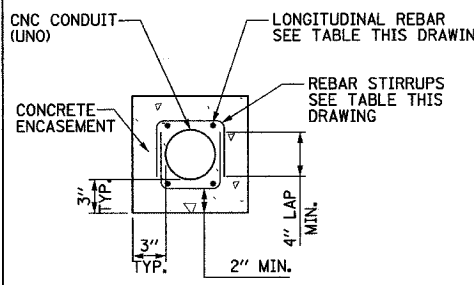
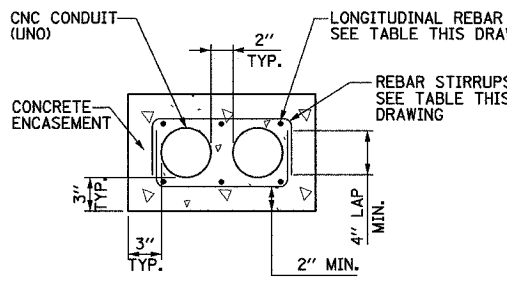


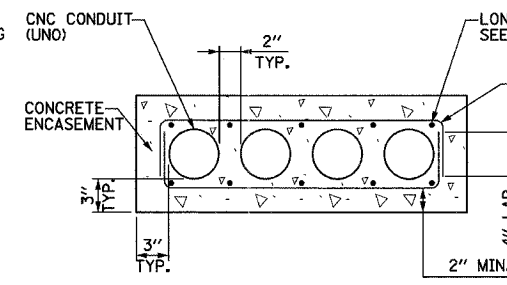
F.A.I. RTE.	SECTION	COUNTY	TOTAL SHEETS	SHEET NO.
94		COOK	764	479
STA.		TO STA.		
FED. ROAD DIST. NO.		ILLINOIS FED. AID PROJECT		
(1516.1, 1717, 1818) R-5		62593		



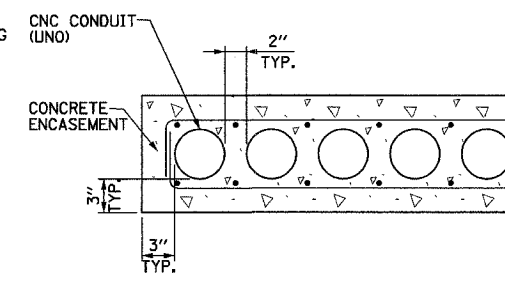
1x1 DUCTBANK DETAIL-
IN REINFORCED CONCRETE
NOT TO SCALE



2x1 DUCTBANK DETAIL-
IN REINFORCED CONCRETE
NOT TO SCALE

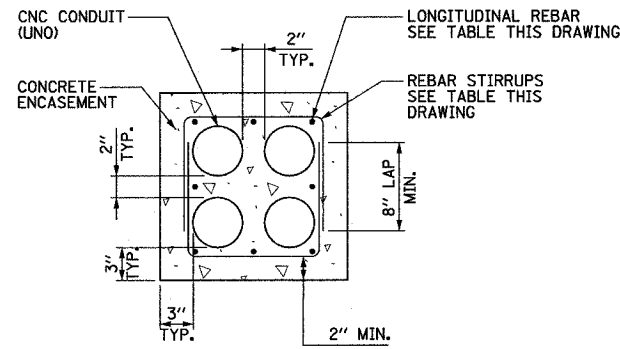


4x1 DUCTBANK DETAIL-
IN REINFORCED CONCRETE
NOT TO SCALE

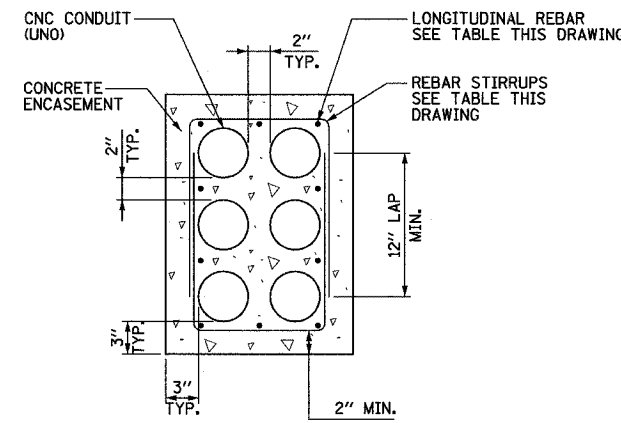


6x1 DUCTBANK DETAIL-
IN REINFORCED CONCRETE
NOT TO SCALE

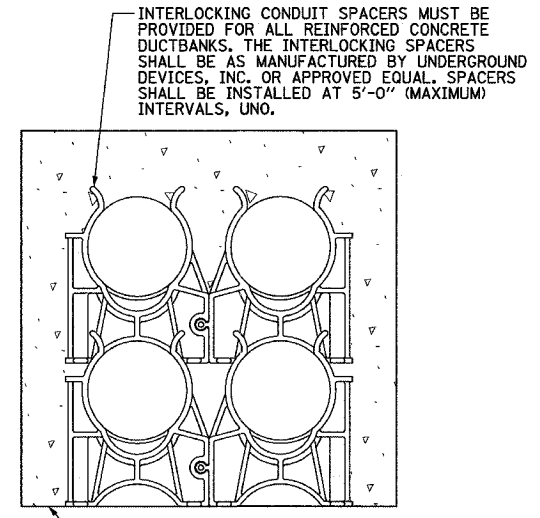
- NOTES:**
- SEE DRAWINGS EI-100 AND EI-101 FOR ELECTRICAL SYMBOLS AND ABBREVIATIONS.
 - PROVIDE MINIMUM CLEARANCE SHOWN FROM TOP OF DUCTBANK TO FINISHED GRADE FOR ALL DUCTBANKS, REGARDLESS OF SIZE. CONTRACTOR SHALL INSTALL DUCTBANKS SUCH THAT THEY WILL CLEAR ALL UNDERGROUND OBSTACLES.
 - TRENCH SHALL HAVE MINIMUM WIDTH SHOWN FOR ALL DUCTBANKS DETAILED ON THIS DRAWING. THE CONTRACTOR SHALL INCREASE TRENCH WIDTH FOR ADDITIONAL CONDUITS, AS DIRECTED BY THE ENGINEER, (AT NO ADDITIONAL COST).



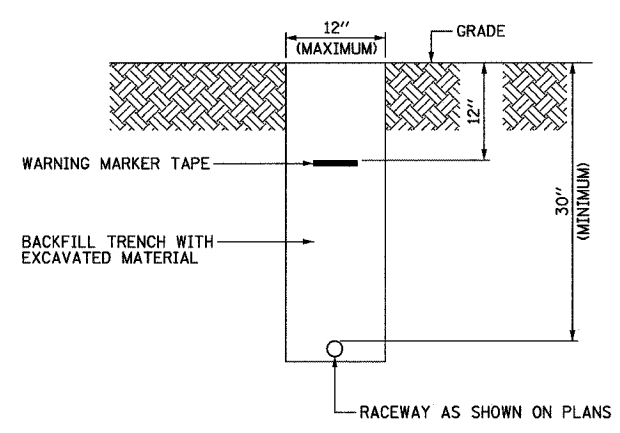
2x2 DUCTBANK DETAIL-
IN REINFORCED CONCRETE
NOT TO SCALE



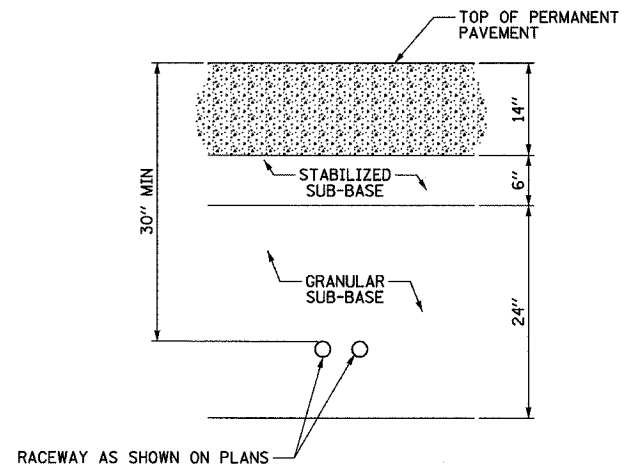
2x3 DUCTBANK DETAIL-
IN REINFORCED CONCRETE
NOT TO SCALE



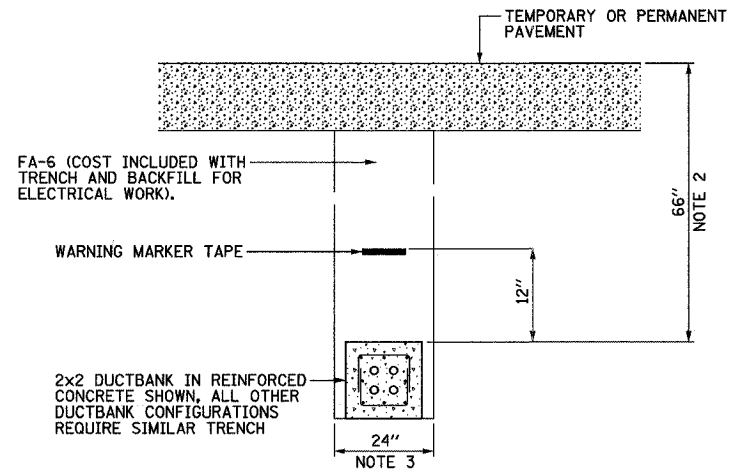
INTERLOCKING CONDUIT SPACER DETAIL
NOT TO SCALE



TYPICAL ELECTRICAL CONDUIT IN UNPAVED AREA
NOT TO SCALE



TYPICAL SURVEILLANCE CONDUIT UNDER PERMANENT PAVEMENT
NOT TO SCALE



TYPICAL ELECTRICAL DUCTBANK UNDER PAVEMENT
NOT TO SCALE

DUCTBANK REINFORCEMENT TABLE		
DUCTBANK CONCRETE CROSS-SECTIONAL AREA SQ. INCHES	LONGITUDINAL REBAR	REBAR STIRRUPS
	BARS	
LESS THAN 450	#4	#3 AT 12" SPACING
451 TO 650	#5	#3 AT 12" SPACING
GREATER THAN 651	#6	#3 AT 12" SPACING

REVISIONS	
NAME	DATE

ILLINOIS DEPARTMENT OF TRANSPORTATION
F.A.I. 94 (DAN RYAN EXPRESSWAY)

ELECTRICAL DUCTBANK DETAILS

SCALE: NOT TO SCALE DRAWN BY:
DATE: MARCH 1, 2006 CHECKED BY:

SINGH
SINGH & ASSOCIATES, INC.
CONSULTING ENGINEERS

300 W. ADAMS ST.
CHICAGO, IL 60606
TEL: (312) 629-0240
FAX: (312) 629-8449

J:\V5\contract\23_dell\15\c23_6096\0220317 11:44:26 AM 2/27/2006