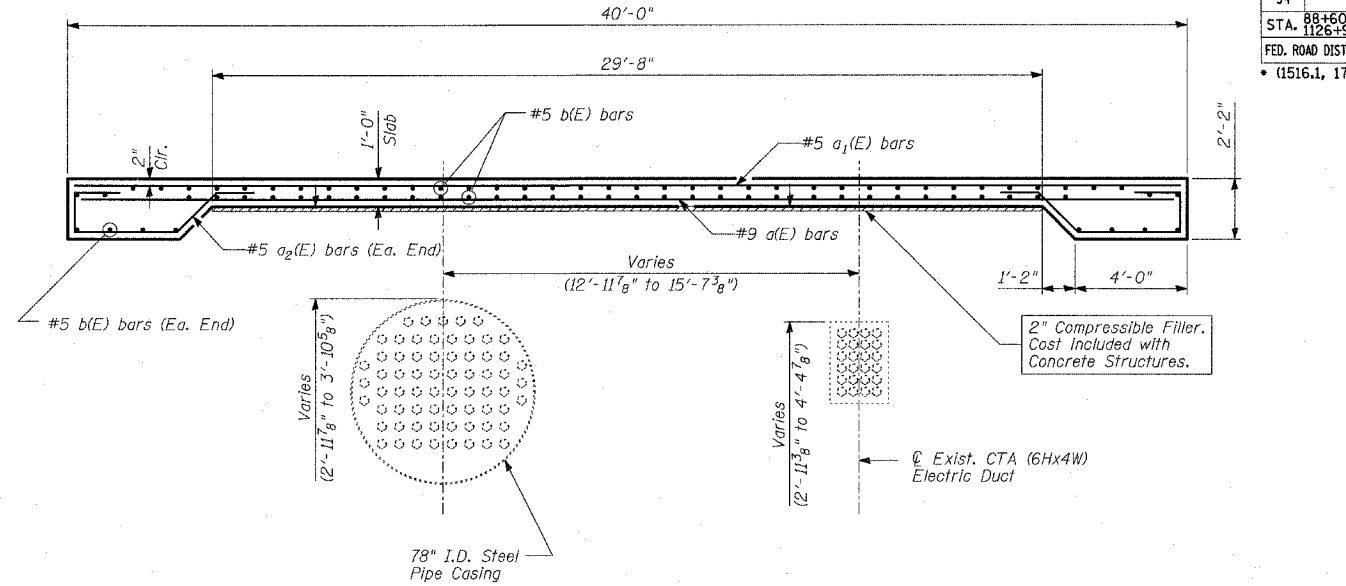
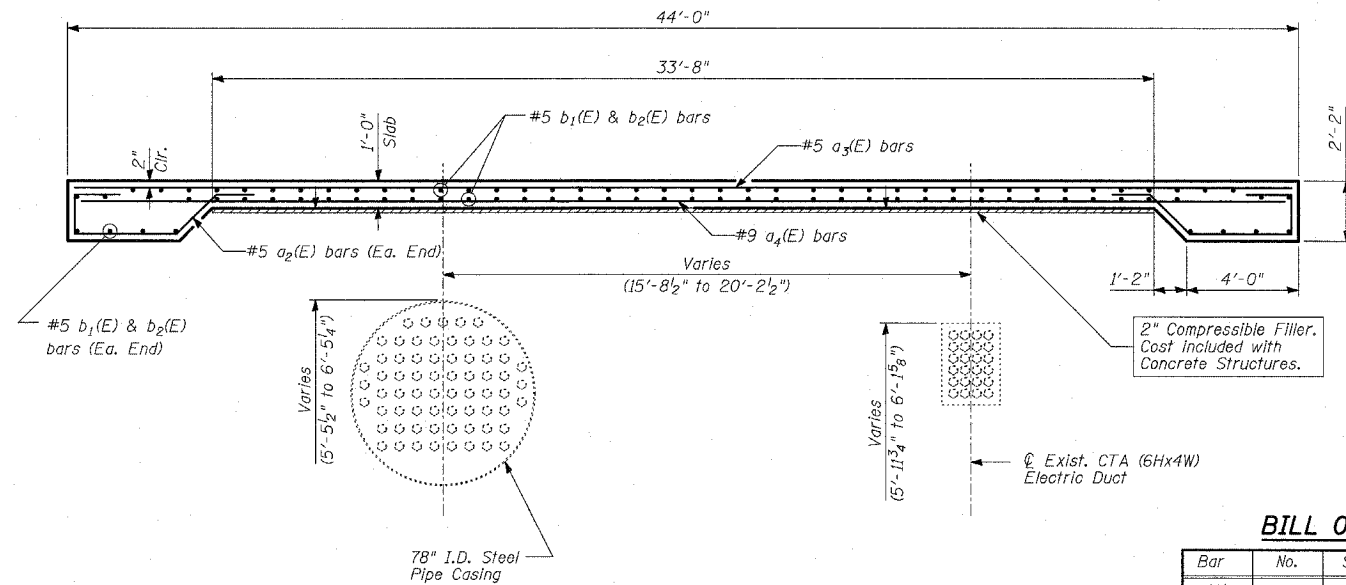


PLAN

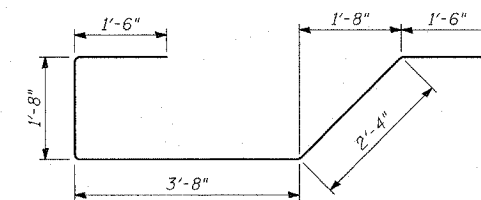
TYLIN INTERNATIONAL



SECTION A-A



SECTION B-B



BAR a2(E)

BILL OF MATERIAL

Bar	No.	Size	Length	Shape
a(E)	78	#9	39'-1"	—
a1(E)	39	#5	39'-9"	—
a2(E)	172	#5	10'-8"	⌋
a3(E)	47	#5	43'-9"	—
a4(E)	91	#9	43'-1"	—
b(E)	82	#5	38'-4"	—
b1(E)	90	#5	34'-3"	—
b2(E)	90	#5	10'-8"	—
Reinforcement Bars, Epoxy Coated			POUND	36,870
Concrete Structures			CU YD	166

Reinforcement bars designated (E) shall be epoxy coated.

REVISIONS	
NAME	DATE

ILLINOIS DEPARTMENT OF TRANSPORTATION
F.A.I. 94 (DAN RYAN EXPRESSWAY)
PROTECTION SLAB DETAILS FOR EXISTING
CTA DUCTS

S.N.
SCALE:
DATE: MARCH 1, 2006

DESIGNED BY: MAF, DJR
DRAWN BY: MAF, DJR
CHECKED BY: MI