

FORMED CONCRETE REPAIR

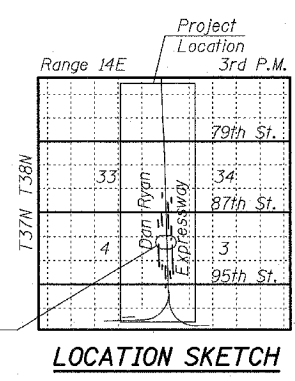
TOTAL BILL OF MATERIAL

ITEM	UNIT	016-0143	016-0144	016-0145
Epoxy Crack Sealing	FOOT	124	105	102
Formed Concrete Repair (Depth < 5")	SQ FT	1,192	255	122

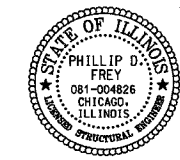
PLAN

- NOTES:**
- Norfolk Southern is formerly known as C&WI RR.
 - Chicago Rail Link is formerly known as CRI&P RR.
 - All work to be done by the Contractor on, over or in close proximity of the CTA (Chicago Transit Authority) right-of-way shall be performed in accordance with Article 107.12 of the Standard Specifications and additional CTA requirements (see Special Provisions)

TYLIN INTERNATIONAL



LOCATION SKETCH



Signed *Phillip D. Frey*
 Phillip D. Frey, S.E. Ill. Lic. No. 081-004826
 Expires 11-30-2006
 Date 3/1/06
 For drawings 1 thru 12 of 12

REVISIONS	
NAME	DATE

ILLINOIS DEPARTMENT OF TRANSPORTATION
**F.A.I. 94 (DAN RYAN EXPRESSWAY)
 SUBSTRUCTURE REPAIR FOR BELT RAILWAY,
 NORFOLK SOUTHERN & CHICAGO RAIL LINK
 GENERAL PLAN**

S.N. 016-0143, -0144 & -0145 DESIGNED BY: DJR, MAF
 SCALE: N.T.S. DRAWN BY: DJR, MAF
 DATE: MARCH 1, 2006 CHECKED BY: MI