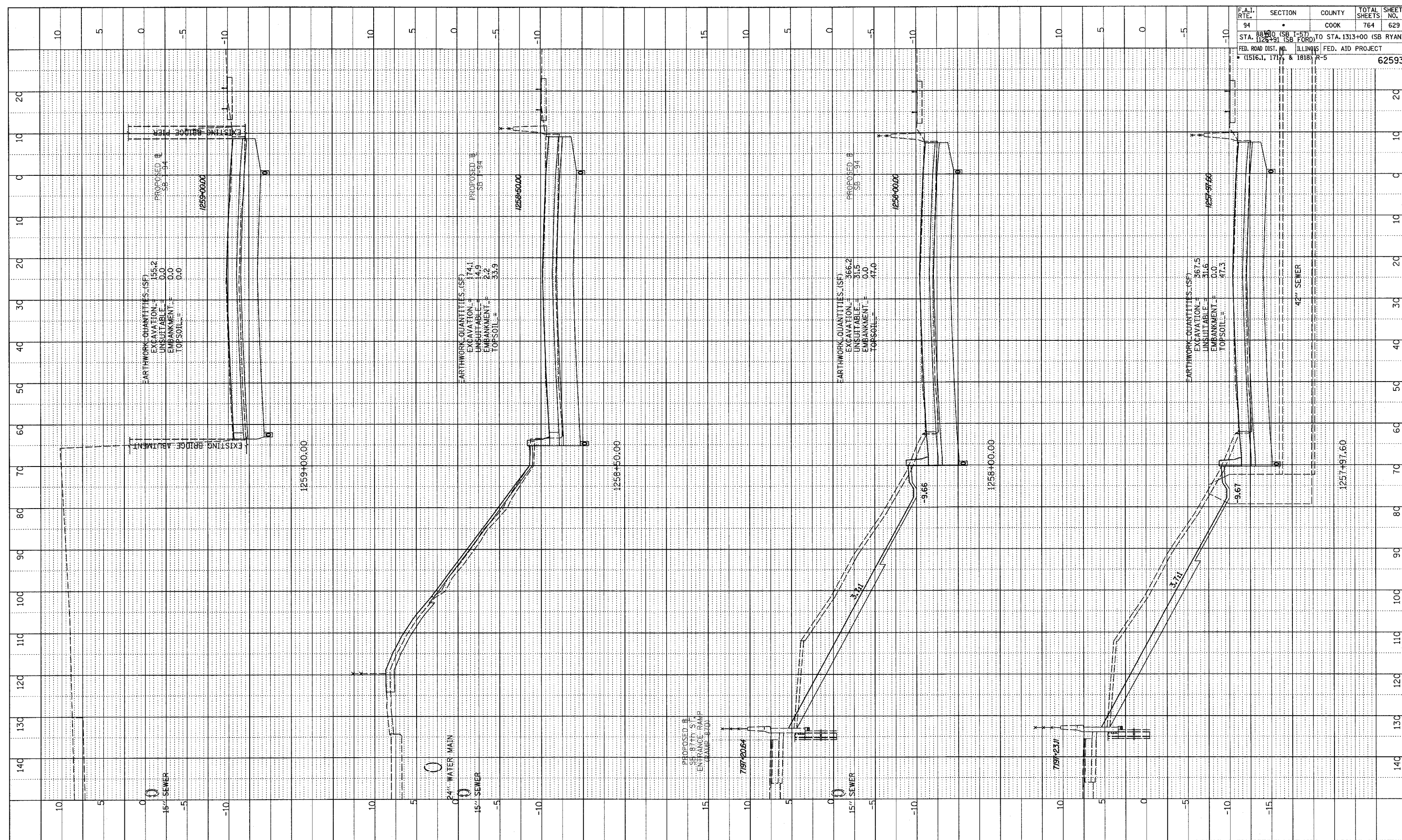


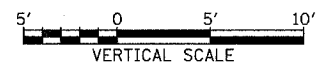
PROFILE SURVEYED  
 PLOTTED CHECKED  
 NOTE BOOK  
 NO. \_\_\_\_\_  
 STRUCTURE NOTATIONS CHFD



F.A.I. RTE.	SECTION	COUNTY	TOTAL SHEETS	SHEET NO.
94		COOK	764	629

STA. 1125+91 (SB FORD) TO STA. 1313+00 (SB RYAN)  
 FED. ROAD DIST. NO. ILLINOIS FED. AID PROJECT  
 (1516.1, 1717, & 1818) R-5 **62593**

TYLIN INTERNATIONAL



I-94 SOUTHBOUND (DAN RYAN EXPWY)  
 STA. 1257+97.60 TO STA. 1259+00

02/27/2006 12:52:21 PM P:\02373\road\023\gpr\23\res\97.dgn